

Responsive Web Page Layouts

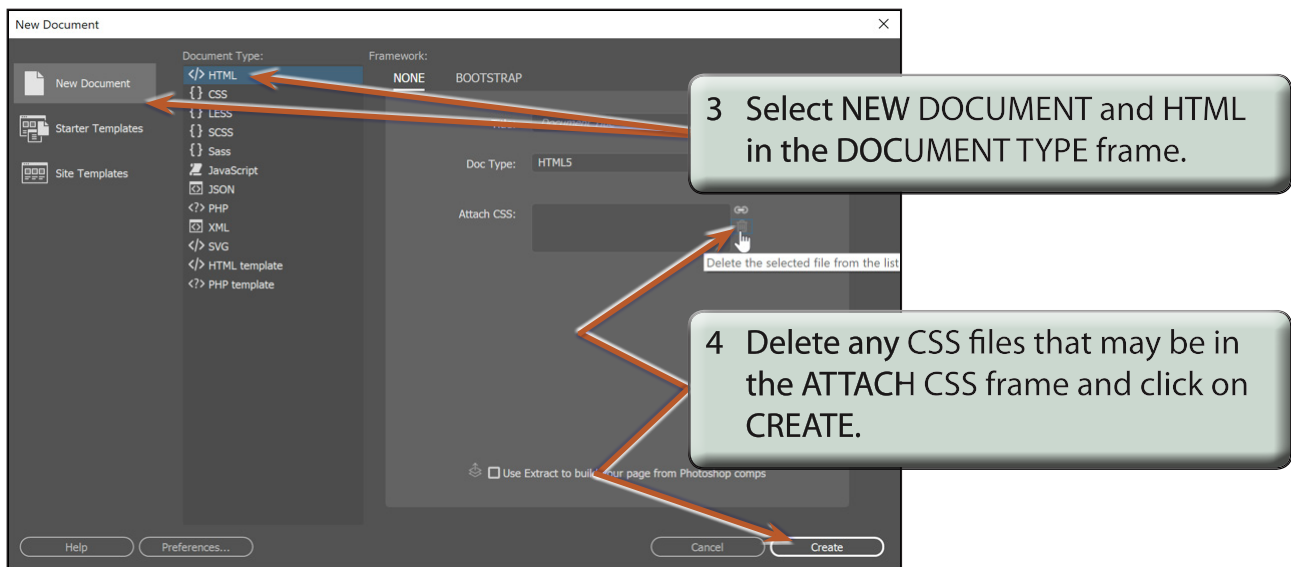
Most modern web designers use either an adaptive web design where the layout adapts for three different screen sizes or a responsive web layout where the layout can adapt to many different screen sizes. Responsive web layouts usually involve a lot more work.

In this chapter you will create a simplified responsive web layout and in the next chapter insert some content into it. The current site will be used, but a new CSS file will need to be created.

Creating the Files

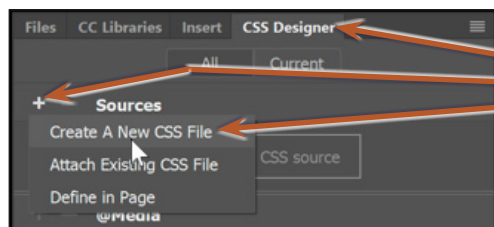
Two files will be created. An INDEX2.HTML page and a related CSS page that will store the layout and formatting code.

- 1 Load DreamWeaver or close the current pages and set the FILES panel to your TRAVELWISE2 site.
- 2 Select CREATE NEW from the START screen or select NEW from the FILE menu to start a new document.

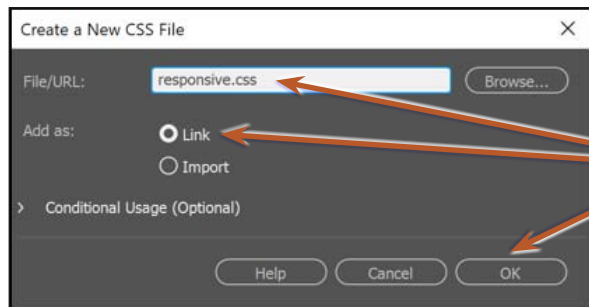


- 5 Save the page in your TRAVELWISE2 folder as:

index2.html



6 Open the CSS DESIGNER panel, click on the ADD CSS SOURCE (+) button and select CREATE A NEW CSS FILE.



7 In the CREATE A NEW CSS FILE dialogue box click in the FILE/URL box and enter:

responsive.css

Check that the ADD AS section is set to LINK and select OK.

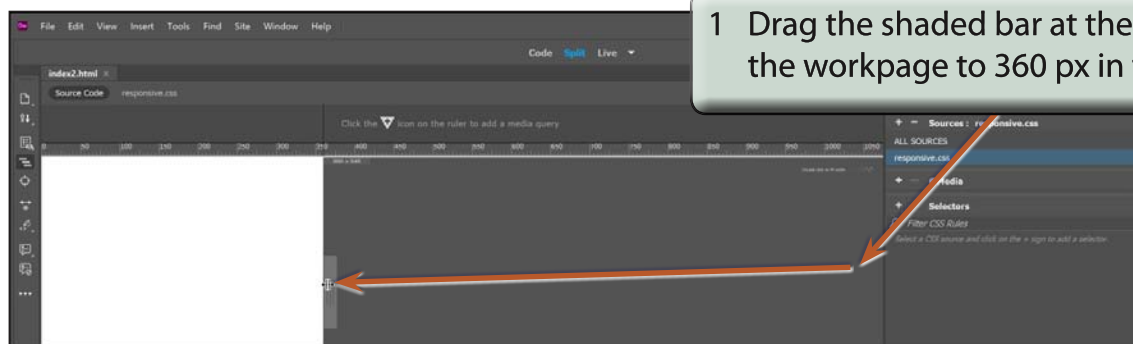
NOTE: The RESPONSIVE.CSS file should be added to the INDEX2.HTML file in the RELATED FILES BAR.

8 Turn on LIVE VIEW and set the screen to SPLIT VIEW.

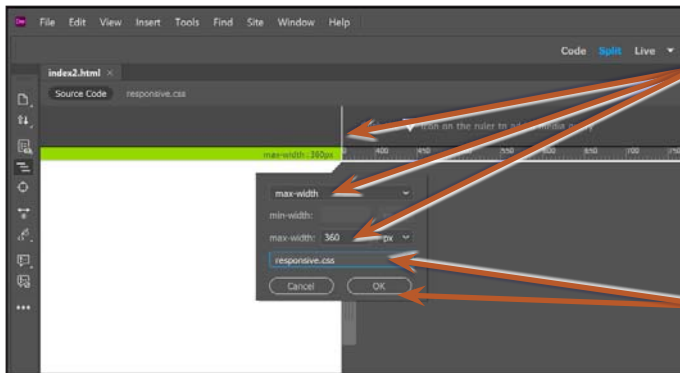
The Mobile Screen Settings

The first screen layout (called a media query) will be for mobile screens. There are many different mobile screen sizes, so you need to set a compromise. In this case a width of 360 px will be used. The height is not important as users will need to scroll their screens.

A Setting the Screen Width

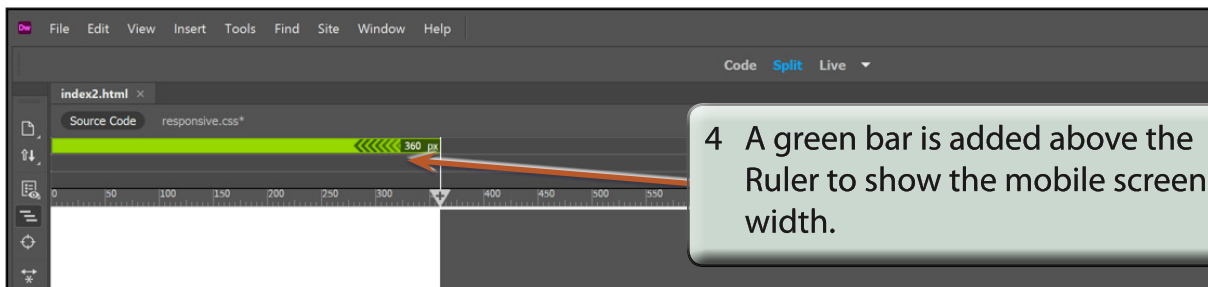


1 Drag the shaded bar at the right of the workpage to 360 px in the Ruler.



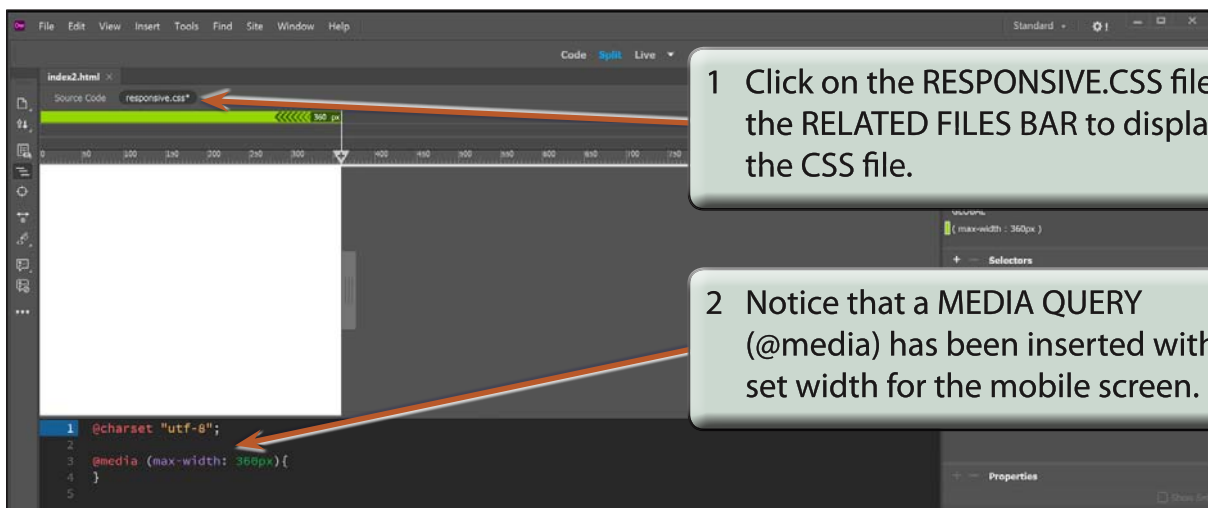
2 Click on the TRIANGLE icon at 360 px in the RULER to insert a media query. Leave the top box set to MAX-WIDTH and the MAX-WIDTH box below it set to 360 px.

3 Click on the CREATE A NEW CSS FILE box, select the RESPONSIVE.CSS file and select OK.



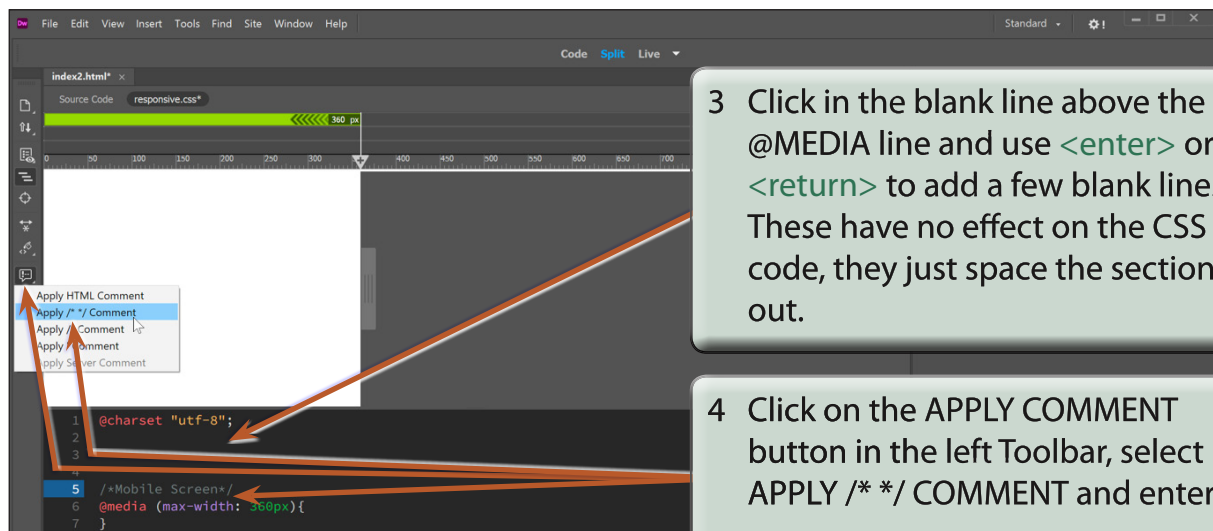
4 A green bar is added above the Ruler to show the mobile screen width.

B Looking at the CSS Code



1 Click on the RESPONSIVE.CSS file in the RELATED FILES BAR to display the CSS file.

2 Notice that a MEDIA QUERY (@media) has been inserted with the set width for the mobile screen.



3 Click in the blank line above the @MEDIA line and use <enter> or <return> to add a few blank lines. These have no effect on the CSS code, they just space the sections out.

4 Click on the APPLY COMMENT button in the left Toolbar, select APPLY /* */ COMMENT and enter: Mobile Screen

NOTE:

- i The comments are displayed in grey and they have no effect on the code. They simply allow you to label the different sections of the code to make editing easier.
- ii Comments in a CSS document are enclosed between /* */ symbols. You can enter these symbols directly or use the APPLY COMMENT button.



5 Click in the row below the closing bracket for the Media Query and add some blank lines.