

Using Behaviours

Java Script is a web programming language that is much more powerful than plain old HTML (HyperText Markup Language). In DreamWeaver you are able to utilise Java Script commands without the need to understand the Java Script language. You do this through the Behaviours section of the TAG INSPECTOR panel. Behaviours allow you to set events to occur on actions such as mouse presses or a page loading, etc. You have already used Java Script when you created rollover buttons.

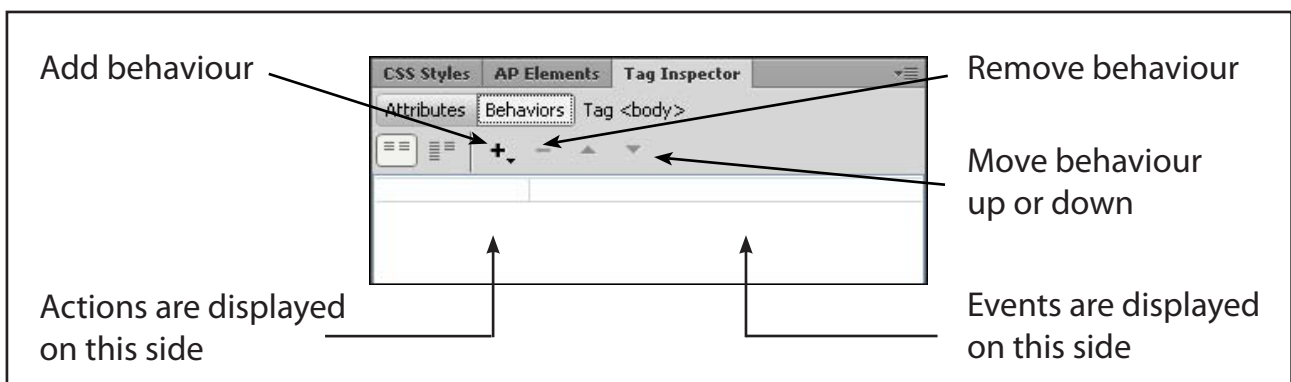
As usual with web pages, not all browsers can understand Java Script. It started to be used when version 3.0 browsers were introduced, but became more common with 4.0 or later browsers.

There are two sections to a BEHAVIOUR:

- an **ACTION** which might be a mouse click or a key press, and
- an **EVENT** which might be to add a popup message or validate fields in a form.

The Behaviours Panel

- 1 Load DreamWeaver and set the FILES panel to the TRAVELWISE2 site.
- 2 Start a new HTML page and set the screen to the DESIGNER workspace.
- 3 Display the WINDOW menu and select TAG INSPECTOR to open the TAG INSPECTOR panel in the PANEL GROUP (you can also press the F9 key to open the TAG INSPECTOR).
- 4 Click on the BEHAVIOURS button and its sections are labelled in the following diagram.



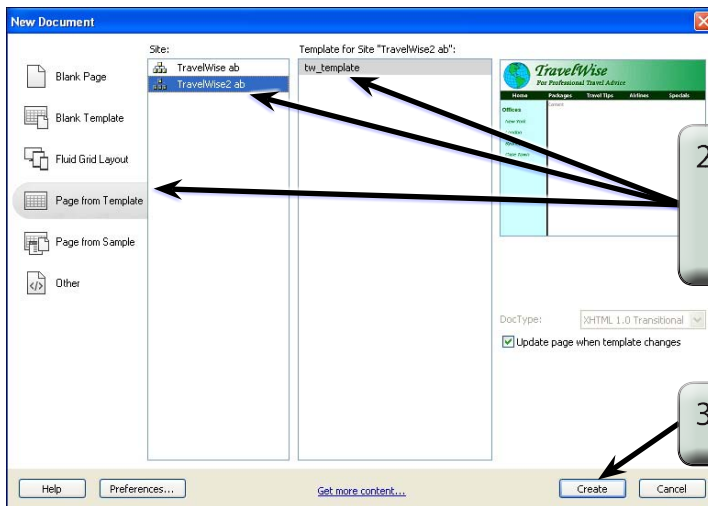
Popup Messages

A variety of popup text messages can be produced using the TAG INSPECTOR panel. These popup messages can be set when a mouse is clicked or moved over an image.

A Setting up a Page

A simple page will be created from the template so that behaviours can be set on it. The content of the page has been prepared for you.

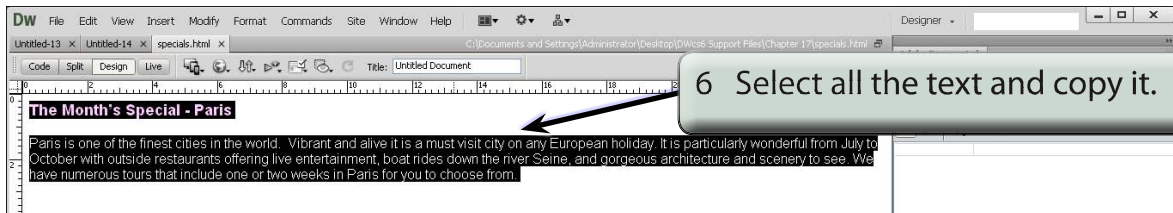
- 1 Display the FILE menu and select NEW.



2 Select PAGE FROM TEMPLATE, select the TRAVELWISE2 site followed by the TW_TEMPLATE file.

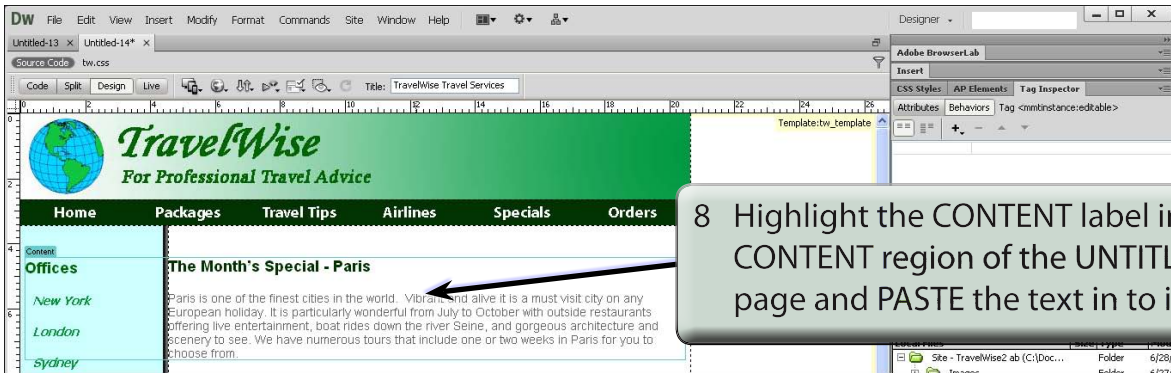
3 Click on CREATE to start the page.

- 4 Display the FILE menu and select OPEN.
- 5 Access the CHAPTER 17 folder of the DWcs6 SUPPORT FILES and open the SPECIALS.HTML page.



6 Select all the text and copy it.

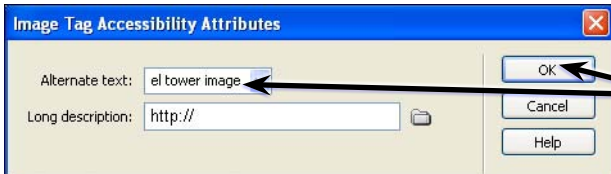
- 7 Close the SPECIALS,HTML pages.



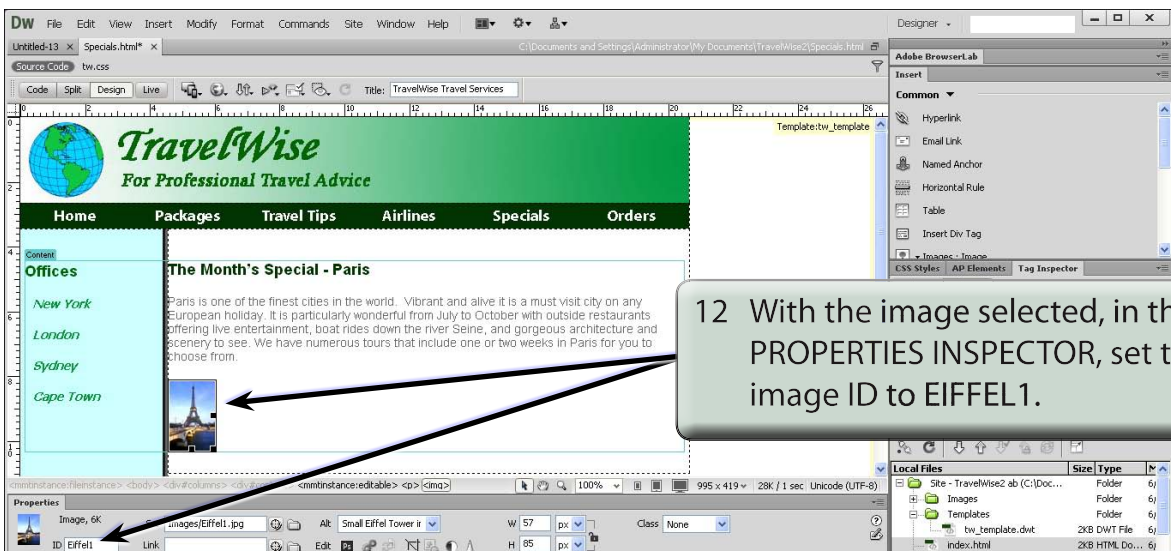
9 Save the page in your TRAVELWISE2 folder as:

Specials or Specials.html

10 Press <enter> or <return> to add a blank line at the end of the text then use the IMAGES - IMAGE button in the COMMON tools of the INSERT panel to insert the EIFFEL1 image from the CHAPTER 17 folder of the DWcs6 SUPPORT FILES and save the image in the IMAGES folder of your TRAVELWISE2 site.



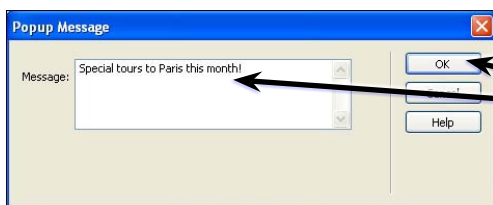
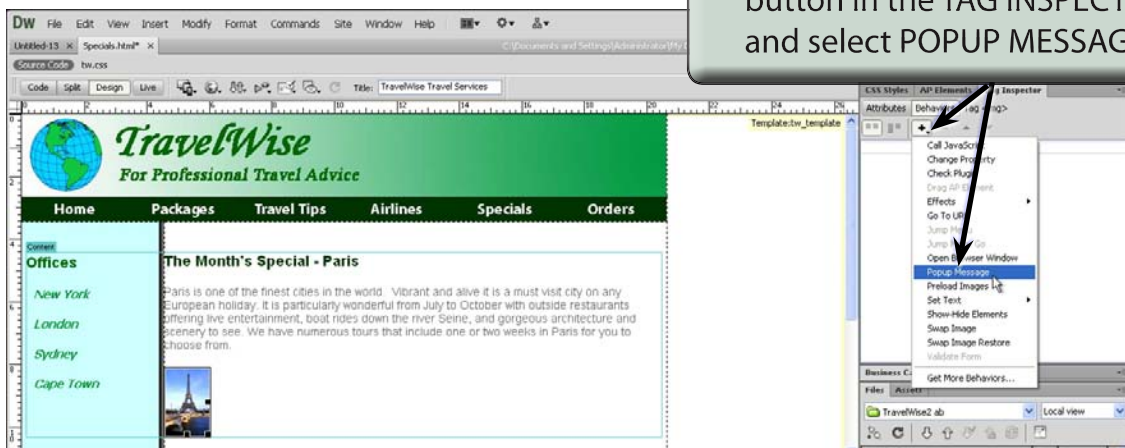
11 Set the ALTERNATE TEXT to: Small Eiffel Tower image and click on OK.



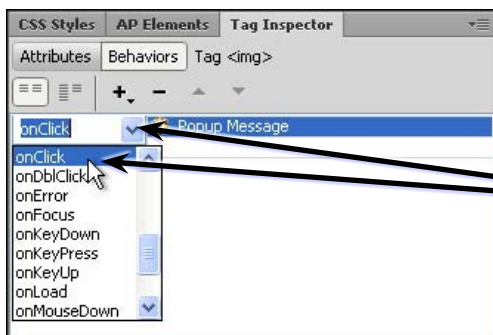
B Popup Dialogue Boxes

You can set a behaviour to show a message when a user clicks on the image.

1 Click on the ADD BEHAVIOUR button in the TAG INSPECTOR panel and select POPUP MESSAGE.



2 In the POPUP MESSAGE dialogue box enter:
Special tours to Paris this month!
and select OK.



3 In the TAG INSPECTOR panel click on the ONCLICK action then click on its arrow to display the possible actions. In this case leave ONCLICK selected.

NOTE: If the BEHAVIOURS section of your TAG INSPECTOR panel is set to a different ACTION, set the ACTION to ONCLICK.