

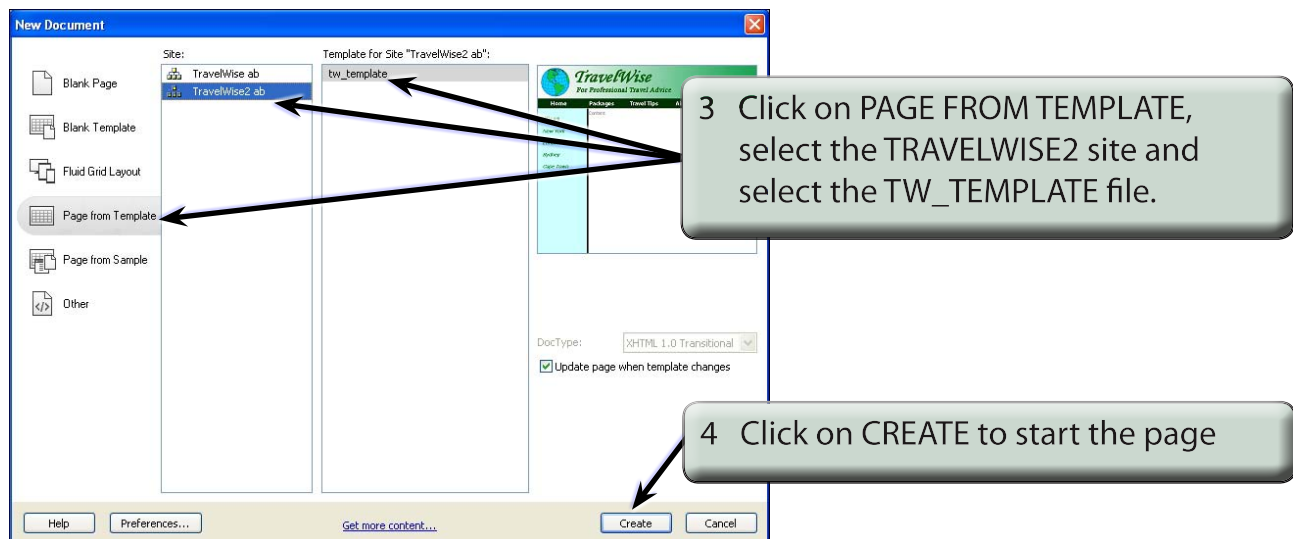
Inserting Media

DreamWeaver allows you to directly import media created in range of other programs such as Adobe Photoshop, Flash and FireWorks. Photoshop documents can now be imported directly into DreamWeaver, compressed and then modified and updated directly from within DreamWeaver. Flash animations and Flash videos can also be imported into DreamWeaver pages.

Creating a Page

A simple page based on the TravelWise2 template will be created for the London office of TravelWise. Some Photoshop and Flash media will be inserted into the page.

- 1 Load DreamWeaver or close the current files and set the FILES panel to your TRAVELWISE2 site.
- 2 Display the FILE menu and select NEW.

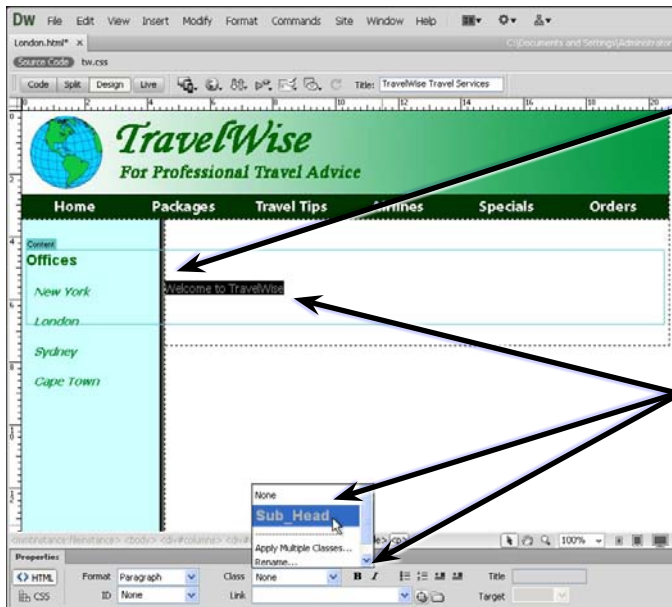


- 5 Save the page in your TRAVELWISE2 folder as:
London or London.html

Inserting Smart Photoshop Objects

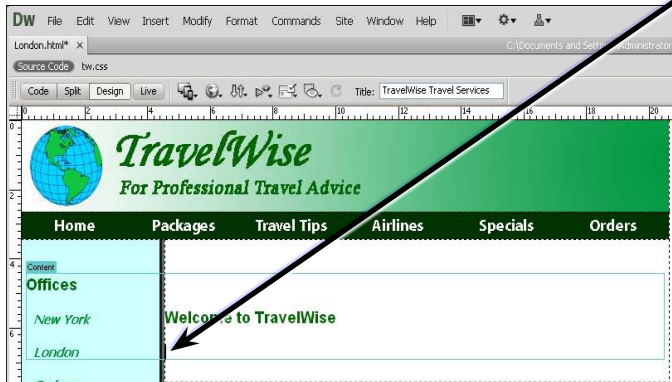
When you insert an image saved as a Photoshop document (PSD), DreamWeaver will automatically compress the file and link it to Photoshop so that it updated at any time.

A Inserting the Object



1 Highlight the CONTENT label in the CONTENT region, press <enter> or <return> to leave a blank line and enter:
Welcome to TravelWise <enter>

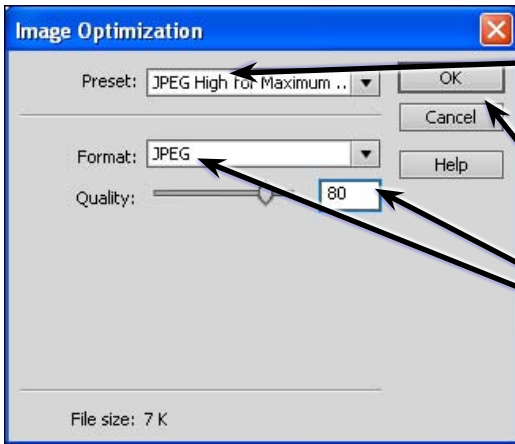
2 Highlight the text and set it to the SUB_HEAD style using the CLASS box in the HTML section of the PROPERTIES INSPECTOR.



3 Position the cursor at the line under the sub-heading.

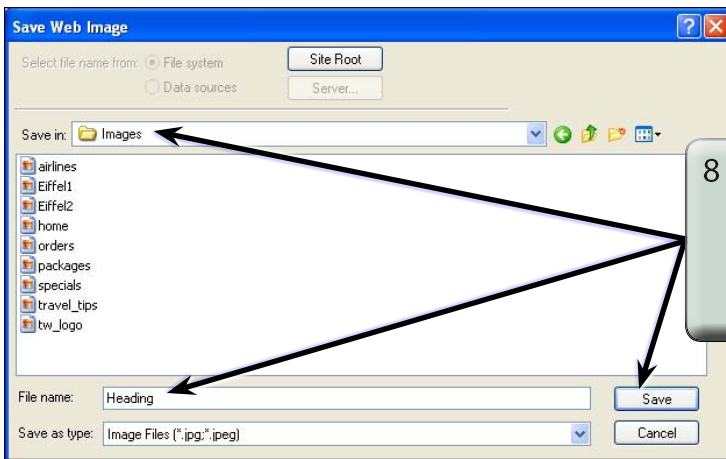
4 In the COMMON tools of the INSERT panel click on the IMAGES - IMAGE button.

5 Access the CHAPTER 19 folder of the DWcs6 SUPPORT FILES and insert the HEADING file.



6 The IMAGE OPTIMIZATION dialogue box is opened which allows you to adjust the compression presets for the file. Leave JPEG HIGH selected.

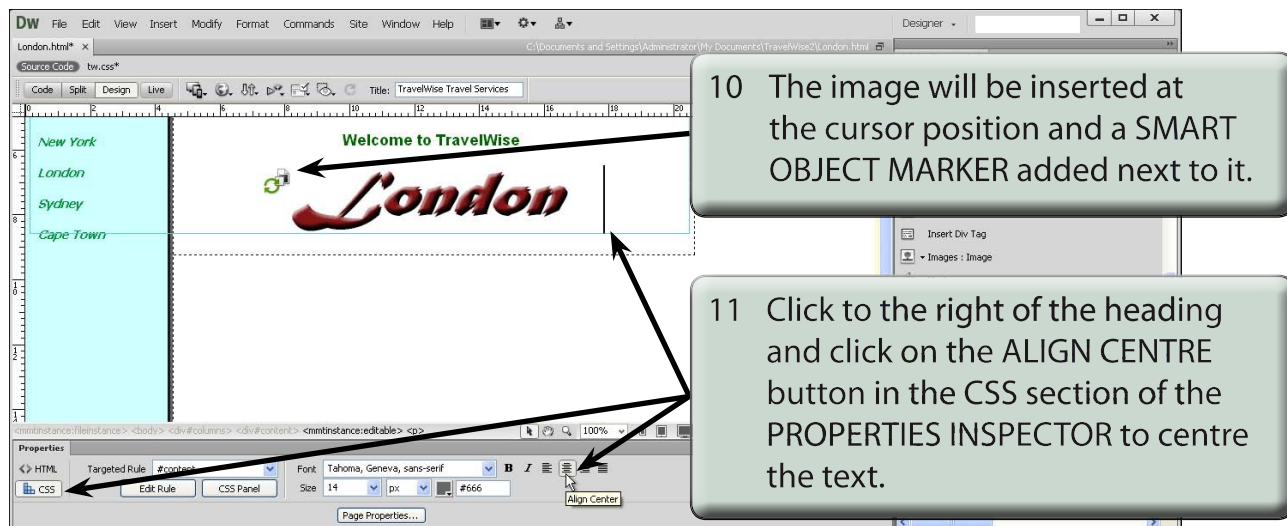
7 Leave the FORMAT as a JPEG file with 80% QUALITY and click on OK.



8 In the SAVE WEB IMAGE dialogue box open the IMAGES folder in your TRAVELWISE2 site and save the image as HEADING.



9 Set the ALTERNATE TEXT to: London Heading and select OK.



NOTE:

- i The SMART OBJECT MARKER has green arrows to indicate that the image is the same as the original Photoshop document.
- ii Both the first line of text and the image will be centred.

B Adjusting the Image

If you have access to Adobe Photoshop CS6, you can make changes to the original Photoshop image and those changes will be automatically updated to the file saved in your TravelWise site. If you don't have access to Photoshop, skip to page 19-9.

- 1 Load Adobe Photoshop CS6.
- 2 Display the FILE menu and select OPEN.
- 3 Access the CHAPTER 19 folder of the DWcs6 SUPPORT FILES and open the HEADING file.