

# Fluid Grid Layouts

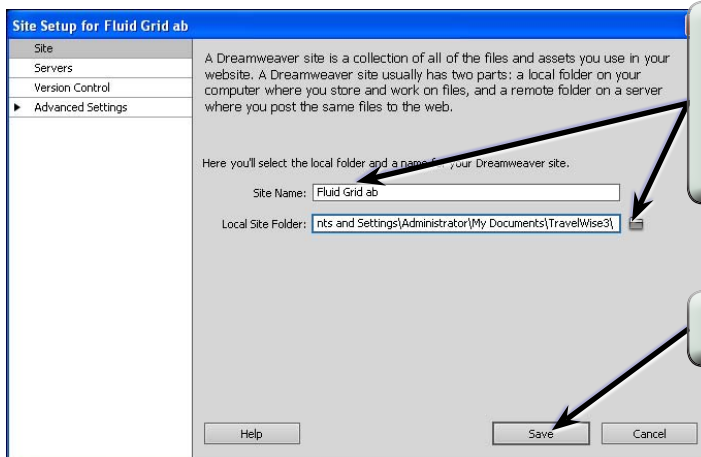
A recent development in web design has been the need to create web sites that are adaptive to different devices. DreamWeaver CS6 has introduced Fluid Grid Layouts to cater for this development.

To demonstrate how to set up Fluid Grid Layouts a simple web page will be created that adjusts to show content in 4 columns on a desktop computer, 3 columns on a tablet device and 2 columns on a smart phone. We will just create a page structure with some brief content rather than a whole site.

## Starting a New Site

So that the files do not get confused a new site will be used.

- 1 Create a folder in your STORAGE folder called TRAVELWISE3.
- 2 Load DreamWeaver or close all the open files.
- 3 Display the SITE menu and select NEW SITE.

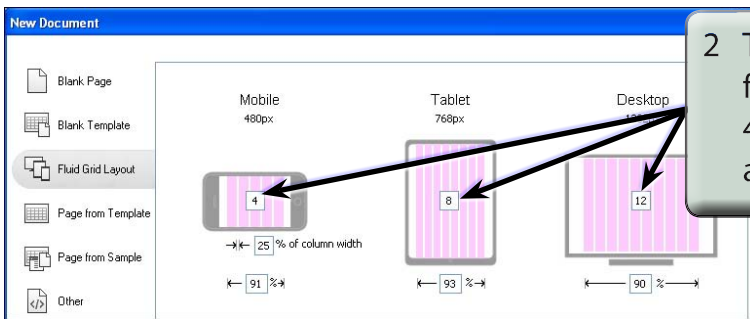


4 Name the site FLUID GRID followed by your initials and use the BROWSE button to select or choose the TRAVELWISE3 folder.

5 Select SAVE to start the site.

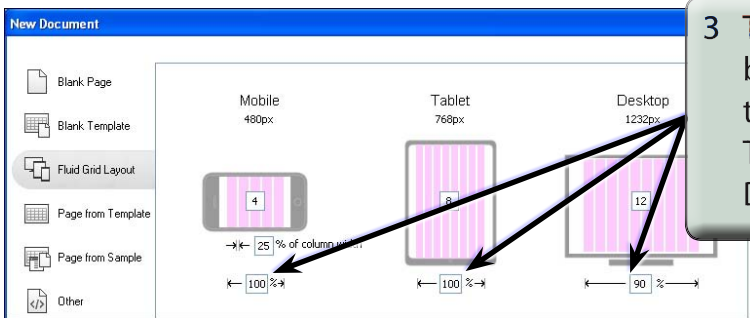
## Inserting the Fluid Grid Layout

- 1 Display the FILE menu and select NEW FLUID GRID LAYOUT.

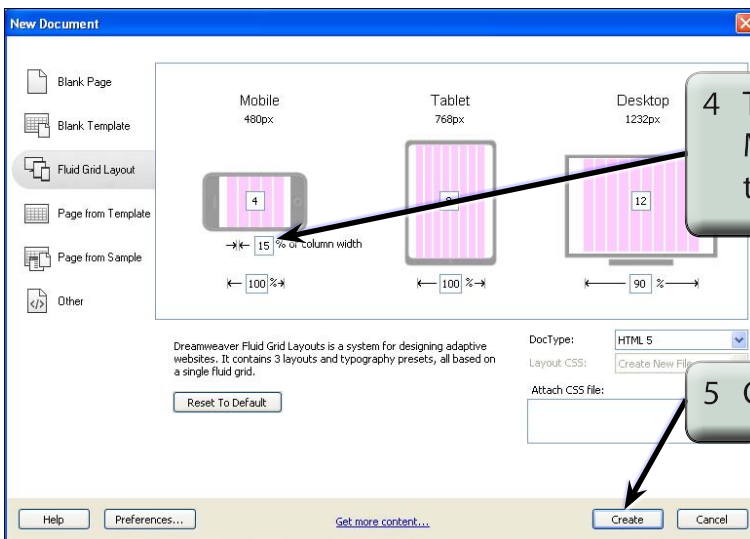


2 The layout provides guide columns for each device. Set the MOBILE to 4 columns, the TABLET to 8 columns and the DESKTOP to 12 columns.

**NOTE:** It can be helpful when laying out pages to set the guide columns for each device in a multiple of 4.

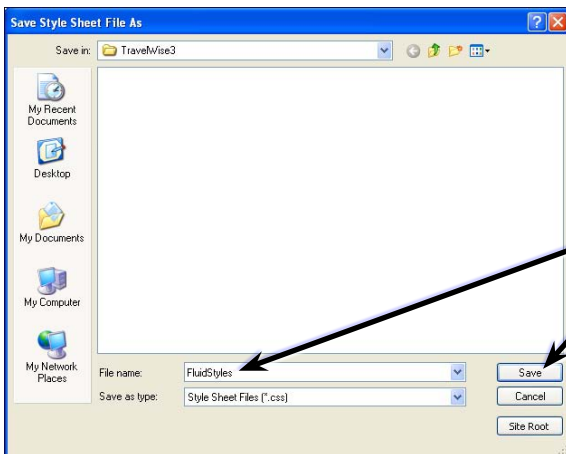


3 The percentage of the screen used by each device can be changed. Set the MOBILE percentage to 100, the TABLE percentage to 100 and the DESKTOP percentage to 90.

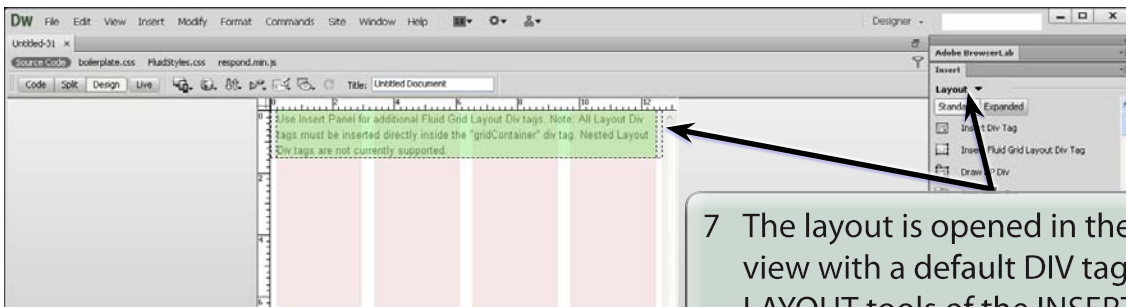


4 The gutter between columns for MOBILE devices is displayed under the MOBILE grid. Set it to 15%.

5 Click on CREATE to start the layout.



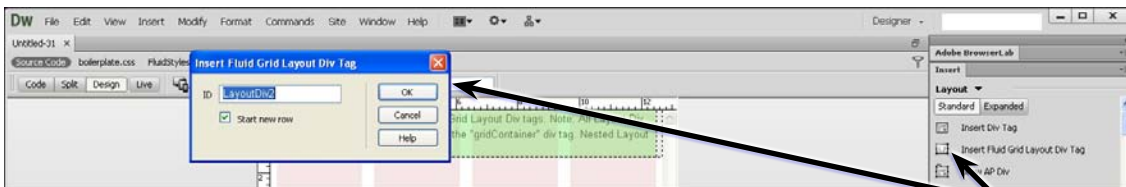
6 You will be asked to save the file that will store the style sheets that are used in the layout, call the file:  
FluidStyles  
and click on SAVE.



7 The layout is opened in the MOBILE view with a default DIV tag and the LAYOUT tools of the INSERT panel is opened.

## Adding Fluid Grid Layout DIV Tags

The layout is started by adding FLUID GRID LAYOUT DIV TAGS. The MOBILE screen is opened by default here because it is more likely that in that view the DIV tags will be under each other.

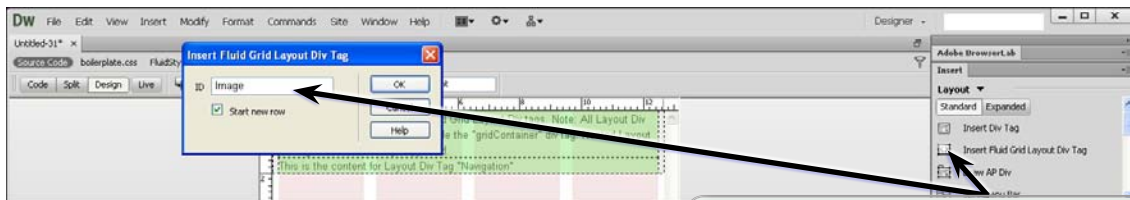


1 In the LAYOUT tools of the INSERT panel click on the INSERT FLUID GRID LAYOUT DIV TAG button and you will be asked to save the tag.

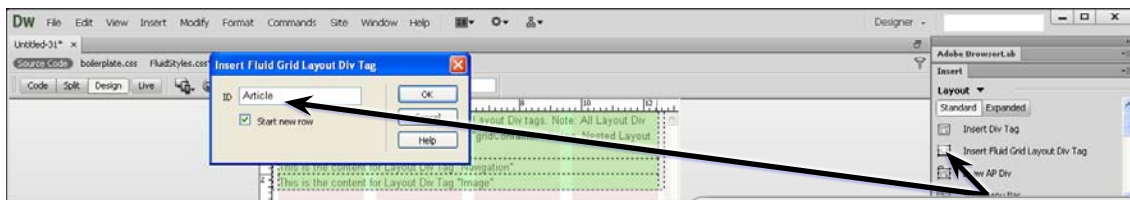


2 Set the ID of the DIV tag to: Navigation and select OK.

**NOTE:** There is a **START NEW ROW** option under the ID box. This allows you to set the following DIV tags to be next to the **NAVIGATION** tag rather than below it. As you are unfamiliar with Fluid Grid Layouts it is best to leave that option on and adjust each DIV tag manually in the layout.



3 Click on the **INSERT FLUID GRID LAYOUT DIV TAG** button again, set the tag's ID to **IMAGE** and select OK.



4 Insert another **FLUID GRID LAYOUT DIV TAG**, set the tag's ID to **ARTICLE** and select OK.