

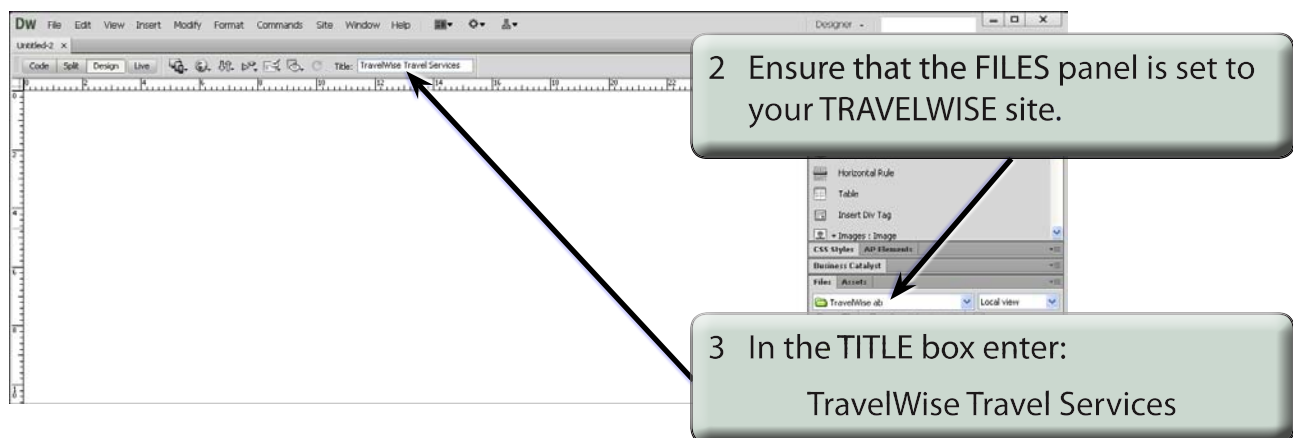
# Using Templates

When you want to create more detailed web sites that have more design elements to them using TEMPLATES is one of the most effective methods to use. Templates are page setups that can be applied to other pages. They are basically master pages. To illustrate the use of templates, the TravelWise web site will be adjusted.

## Creating the Template

The template will be created from a blank page, however an existing page can be converted into a template if necessary.

- 1 Load DreamWeaver or close the current pages and create a NEW HTML page. The screen should be set to the DESIGNER workspace.



The screenshot shows the DreamWeaver Designer workspace. The title bar indicates the page is titled "TravelWise Travel Services". The Files panel on the right shows the site structure, with "TravelWise ab" selected. Two callout boxes provide instructions:

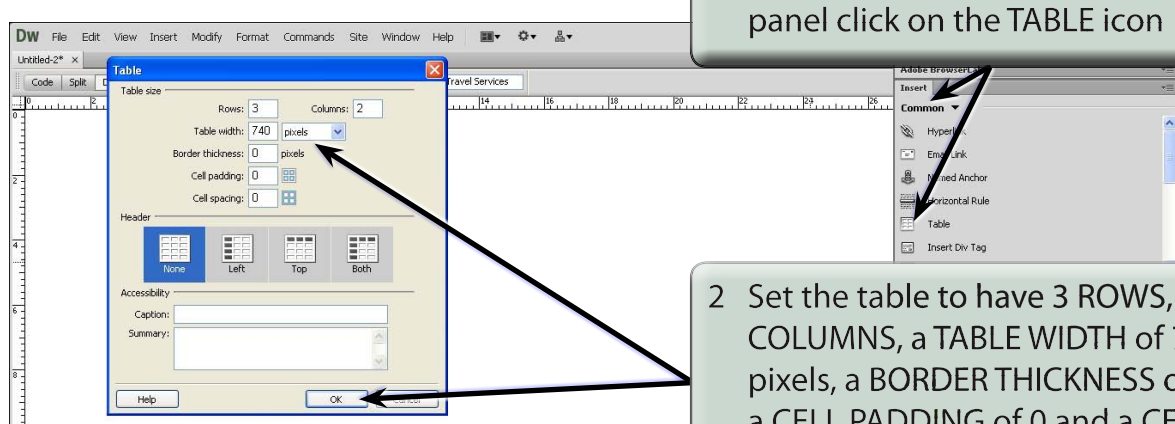
- 2 Ensure that the FILES panel is set to your TRAVELWISE site.
- 3 In the TITLE box enter: TravelWise Travel Services

- 4 A template for the site will be created then applied to a series of other pages. The design of the template will have the following structure.

|                    |         |
|--------------------|---------|
| Logo               |         |
| Navigation Buttons |         |
| Image              | Content |

## A Creating the Table

A 3 x 2 table will be drawn then modified to create the required layout.

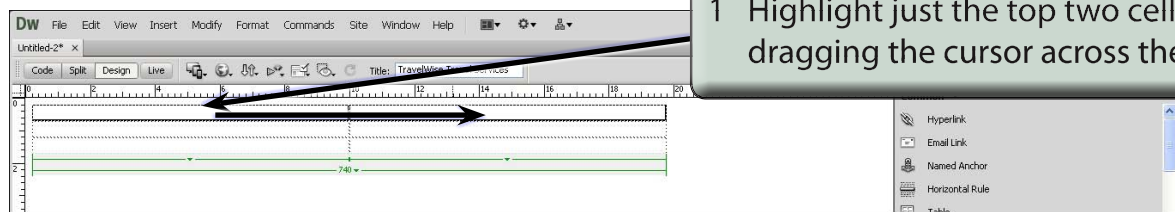


1 In the COMMON tools of the INSERT panel click on the TABLE icon

2 Set the table to have 3 ROWS, 2 COLUMNS, a TABLE WIDTH of 740 pixels, a BORDER THICKNESS of 0, a CELL PADDING of 0 and a CELL SPACING of 0, then select OK.

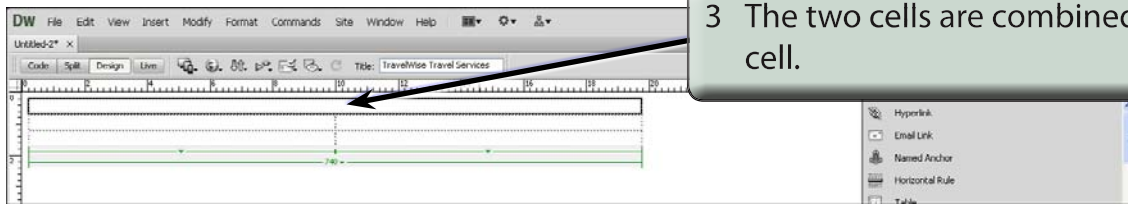
## B Merging Cells

Cells can be merged to create the layout shown in the diagram on the previous page.

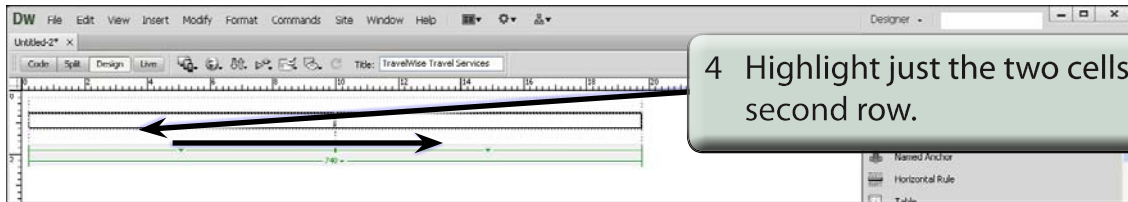


1 Highlight just the top two cells by dragging the cursor across them.

2 Display the MODIFY menu, highlight TABLE and select MERGE CELLS.



3 The two cells are combined into one cell.



4 Highlight just the two cells in the second row.

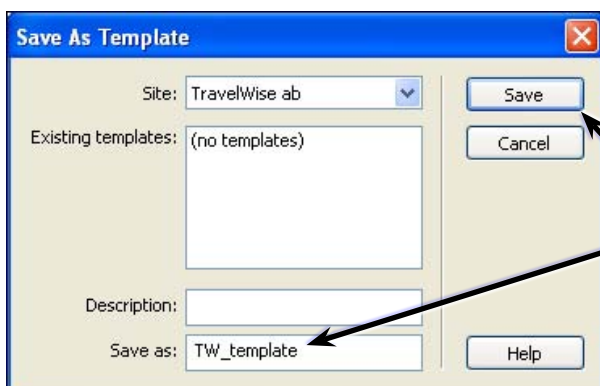
5 Display the MODIFY menu, highlight TABLE and select MERGE CELLS.

**NOTE:** By using a table, a series of regions have been created on the page.

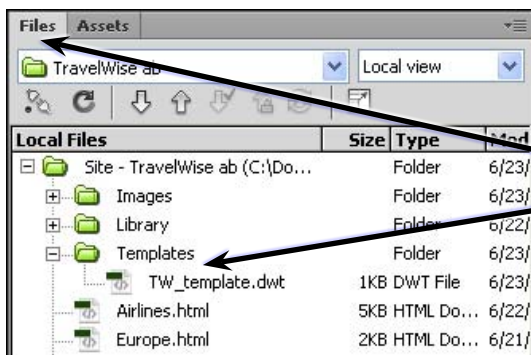
## Saving the Page as a Template

The page can now be saved as a template rather than as a normal page. This allows other pages to be given its design.

1 Display the FILE menu and select SAVE AS TEMPLATE.



2 In the SAVE AS TEMPLATE dialogue box set the SAVE AS box to TW\_template and click on SAVE.



3 DreamWeaver saves the page in a folder called TEMPLATES within your site's folder in the FILES panel. Expand the folder to see the template file.

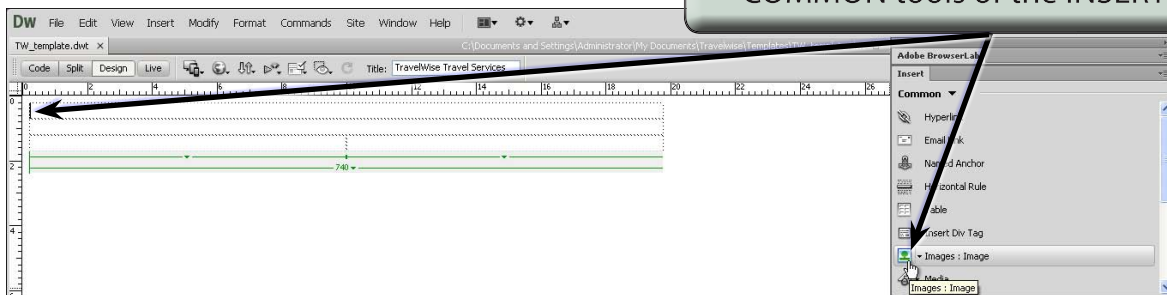
## Completing the Template

The parts of the template that will be displayed on all pages can now be entered.

### A Adding a Logo

A logo will be placed in the top cell.

1 Click in the top cell then click on the IMAGES-IMAGE button in the COMMON tools of the INSERT panel.



- 2 Access the DWcs6 SUPPORT FILES, open the CHAPTER 8 folder and click on the LOGO.GIF file.
- 3 Select OK or CHOOSE to insert the image.
- 4 Select YES to the ROOT FOLDER warning dialogue box and save the image in the IMAGES folder within your TRAVELWISE folder.