

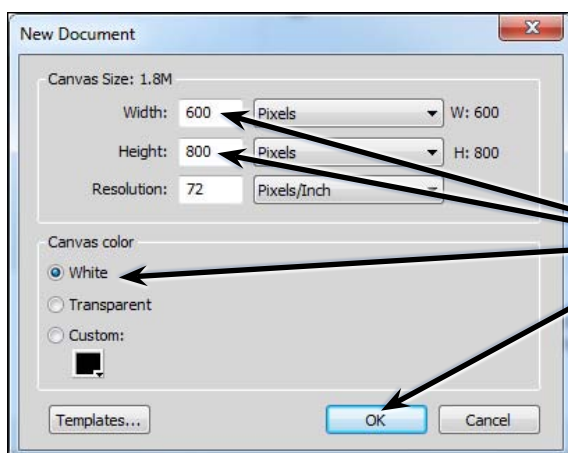
Creating a Detailed Sketch

To further your understanding of the drawing tools that FireWorks provides, the following sketch of a road leading to the ocean will be created.



Starting the Document

- 1 Load Adobe FireWorks CS6 or close the current documents then select FIREWORKS DOCUMENT from the CREATE NEW section of the FIREWORKS WELCOME SCREEN.



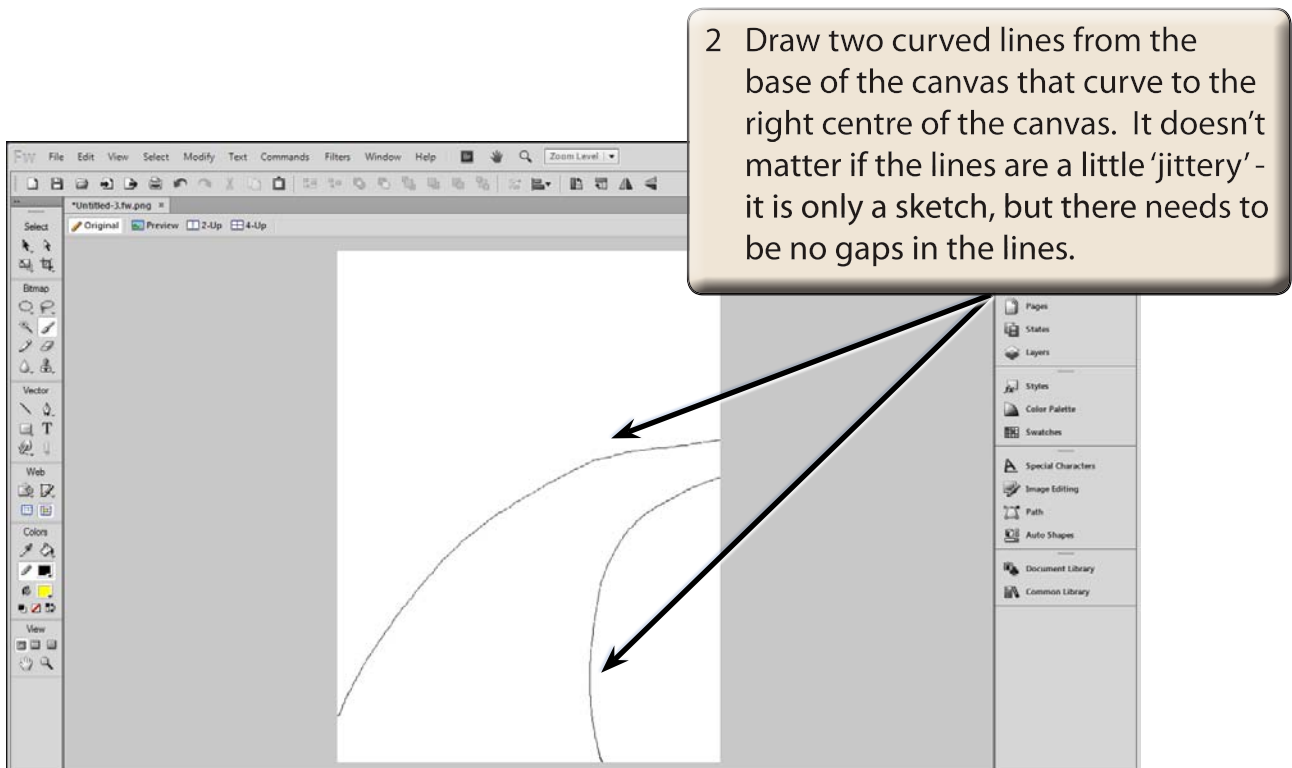
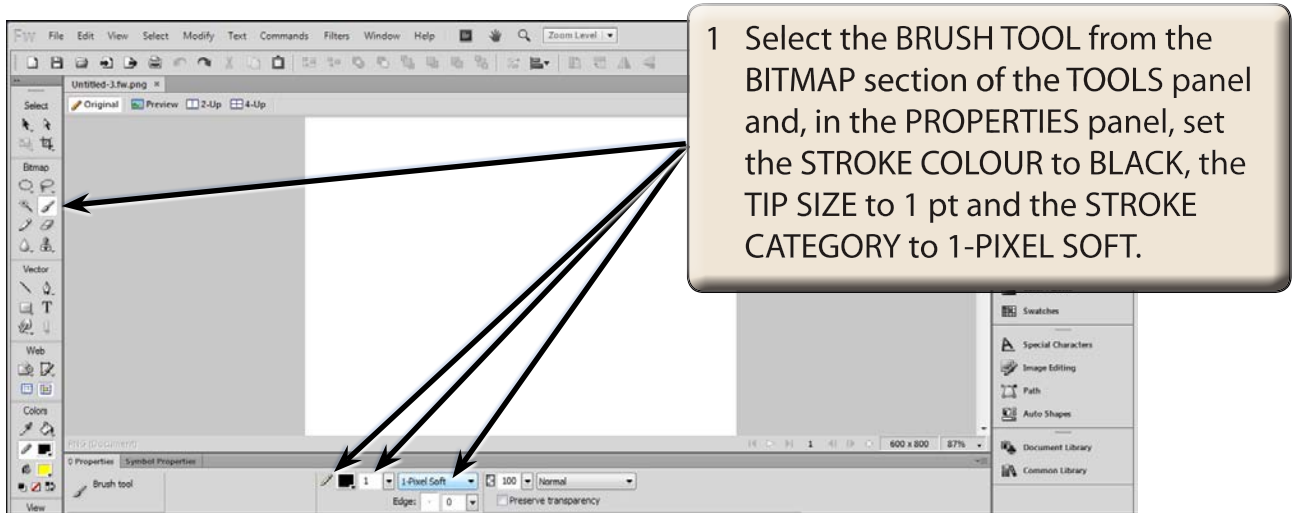
2 Set the WIDTH to 600 pixels, the HEIGHT to 800 pixels, the CANVAS COLOUR to WHITE and select OK.

- 3 Press CTRL+0 or COMMAND+0 to set the screen view to FIT ALL. This will allow you to see the whole canvas.

Creating the Road and Hill

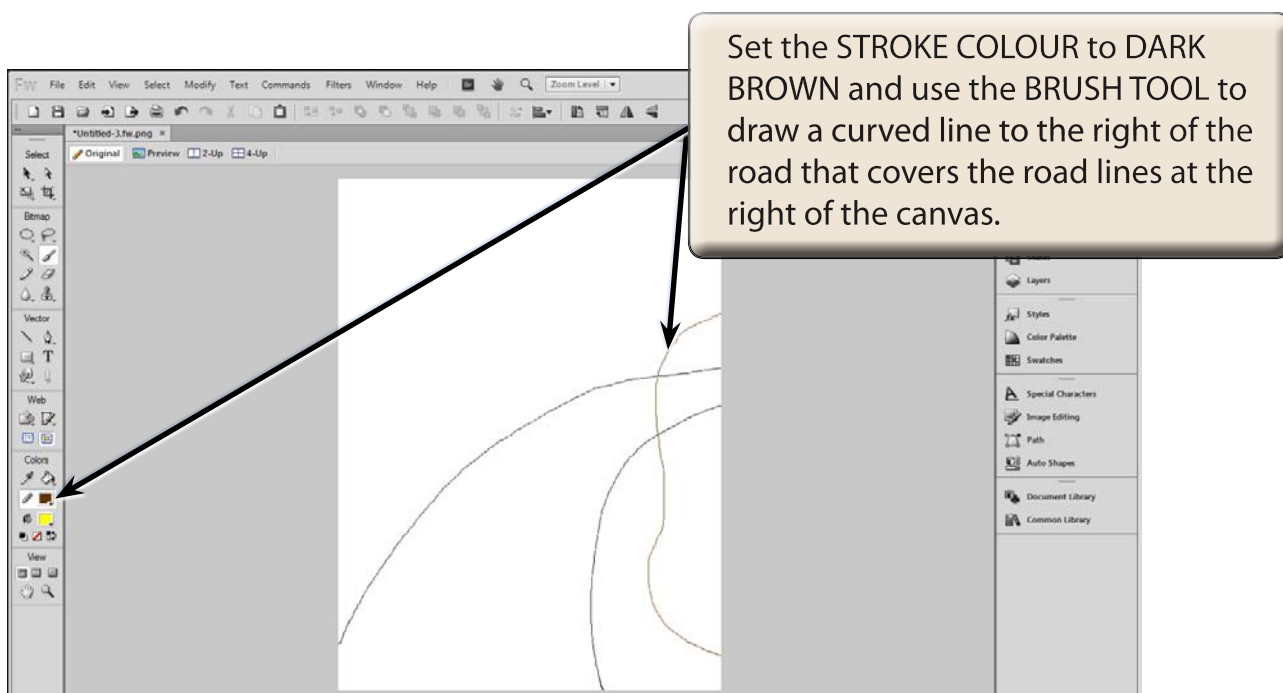
The first part of the sketch will involve creating a road that appears to flow away from the viewer, with a hill to its right.

A Creating the Outline of the Road



- NOTE:**
- i If you make a mistake with the lines, press **CTRL+Z** or **COMMAND+Z** to undo the line and try again.
 - ii It may take a few goes to get the lines looking the way you want them to, and you need to draw over any gaps.

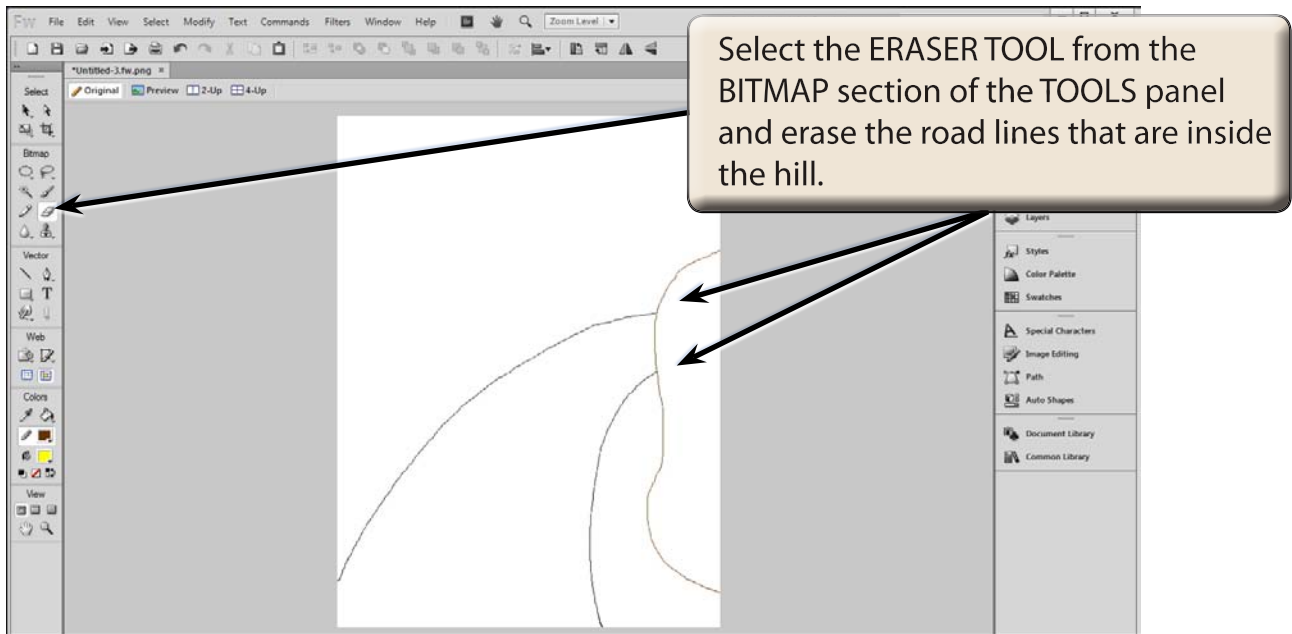
B Creating the Outline of the Hill



- NOTE:** Check over the brown line for any gaps and use the **BRUSH TOOL** to draw over them.

C Erasing Overlapping Lines

The road and the hill will be filled with colours, but brush lines are not removed when you do this, so the road lines that overlap the hill line will need to be erased.



NOTE: Check that no gaps are created when you erased the lines. If you did create gaps, use the BRUSH TOOL to draw over them.

D Filling the Road and Hill

