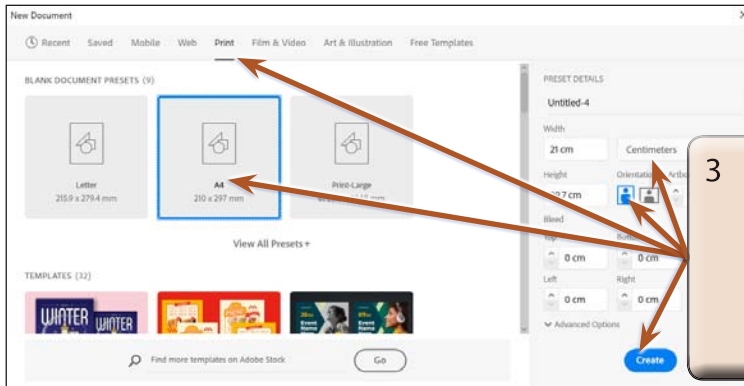


Perspective Drawing

The PERSPECTIVE GRID TOOL allows you to place a grid on the Artboard to help create drawings with depth. In this chapter the different components of the grid will be explained then a drawing created using the perspective grid.

Starting a New Document

- 1 Load Adobe Illustrator or close the current document.
- 2 Select NEW FILE from the WELCOME screen or NEW from the FILE menu to start a new document.



- 3 Select the PRINT profile followed by the A4 preset (or the paper size your printer uses), set the UNITS to CENTIMETRES, the ORIENTATION to PORTRAIT and select CREATE.

The Perspective Grid

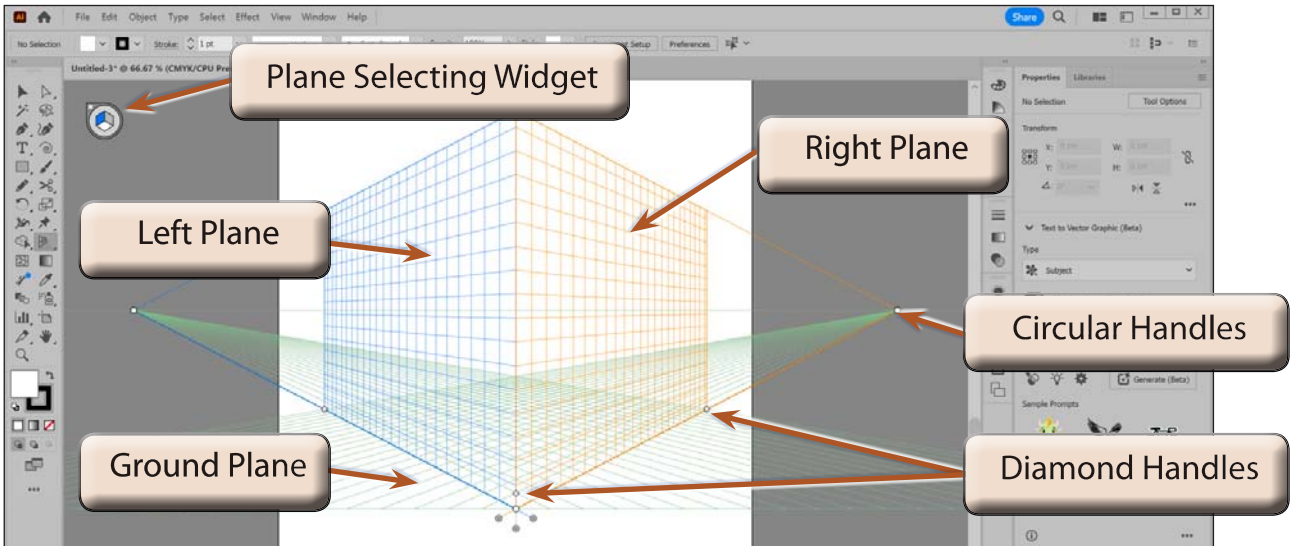
Before starting to draw using the PERSPECTIVE GRID you need to have a basic understanding of its sections.

A Displaying the Grid



- 1 Click and hold on the PERSPECTIVE GRID TOOL in the TOOLBAR and the PERSPECTIVE tools are displayed. Select the PERSPECTIVE GRID TOOL to add the grid to the Artboard.

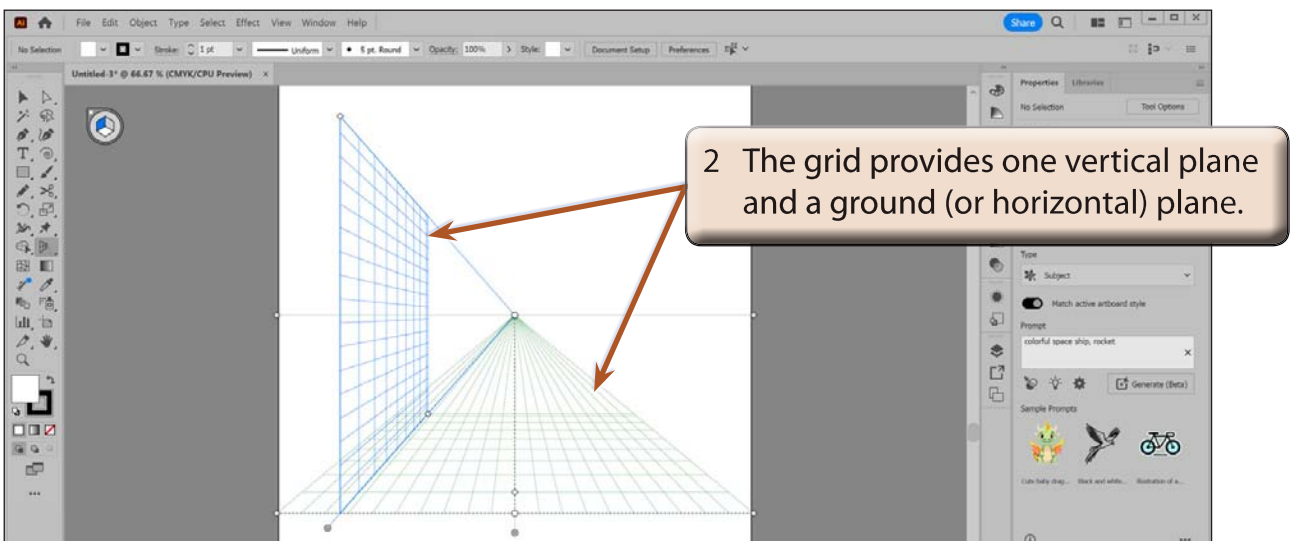
- 2 Press the **CTRL-** or **COMMAND-** to adjust the zoom so that you can see all the sections of the grid. Some of the sections of the PERSPECTIVE GRID are labelled in the following diagram.



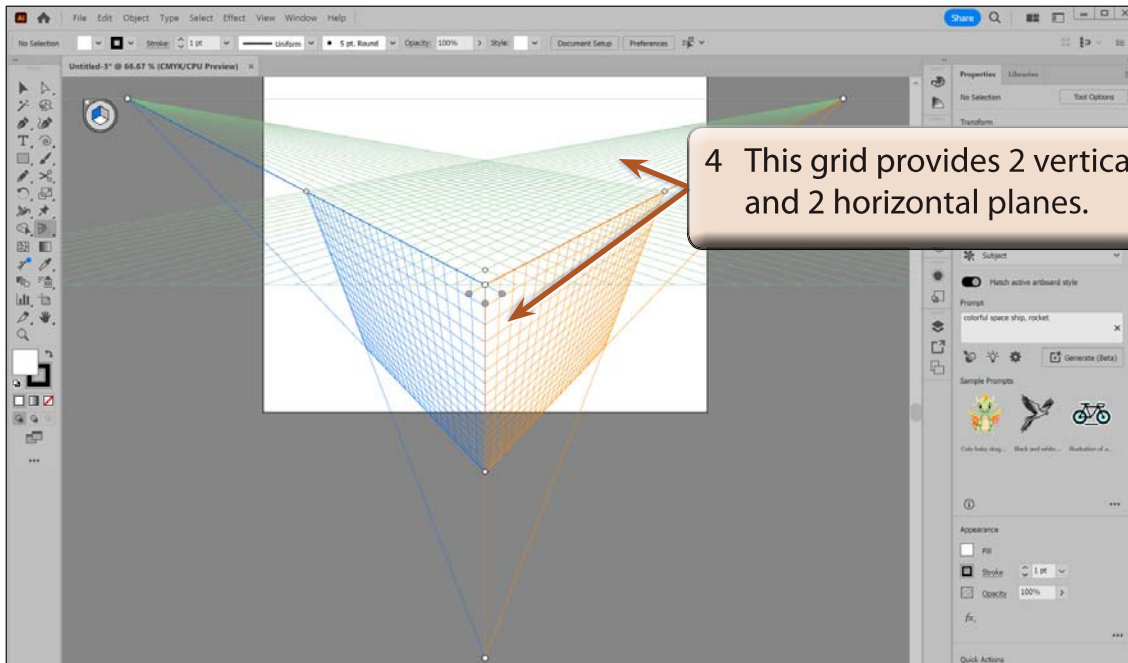
B The Different Perspective Grids

There are three different types of perspective grids that can be applied to the Artboard, a 1-point grid, a 2-point grid and a 3-point grid.

- 1 Display the VIEW menu, highlight PERSPECTIVE GRID followed by ONE POINT PERSPECTIVE and select [1P-NORMAL VIEW].



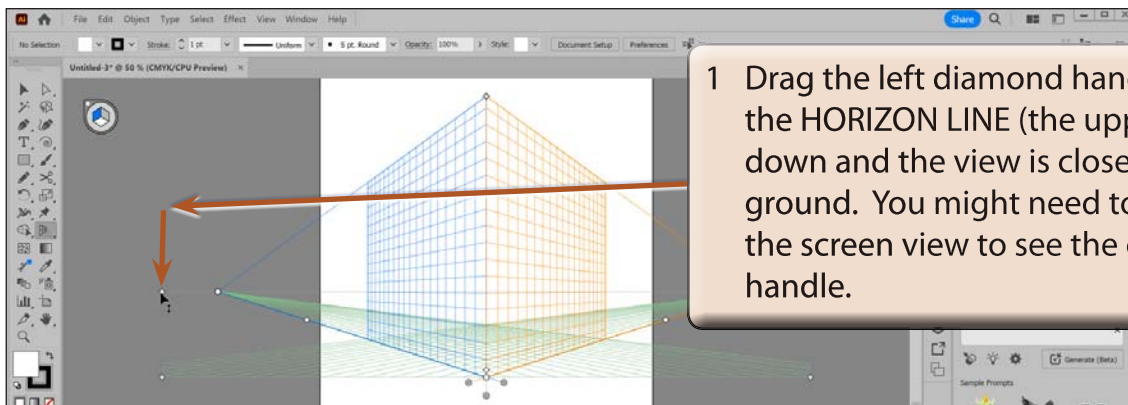
- 3 Display the VIEW menu, highlight PERSPECTIVE GRID followed by THREE POINT PERSPECTIVE and select [3P-NORMAL VIEW].

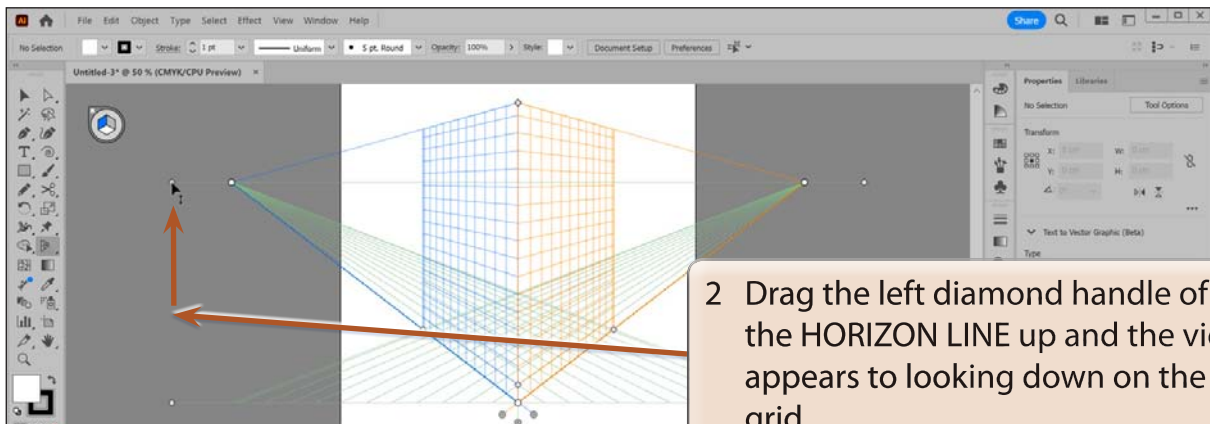


- 5 Display the VIEW menu, highlight PERSPECTIVE GRID followed by TWO POINT PERSPECTIVE and select [2P-NORMAL VIEW]. This is the default PERSPECTIVE GRID and it provides 2 vertical planes and 1 horizontal plane.

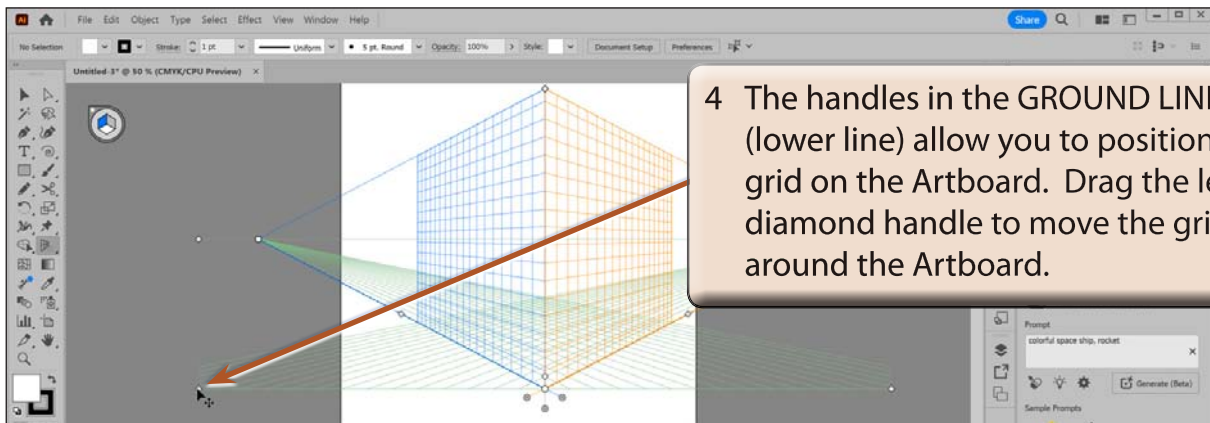
C The View Lines

There are 2 view lines on the 2-point perspective grid which run horizontally across the grid - the GROUND VIEW line (lower line) and the HORIZON (or EYE-VIEW) line.





3 Press **CTRL+Z** or **COMMAND+Z** until the grid is returned to its original setting.



5 Press **CTRL+Z** or **COMMAND+Z** until the grid is returned to its original position.