

Drawing and Painting Tools

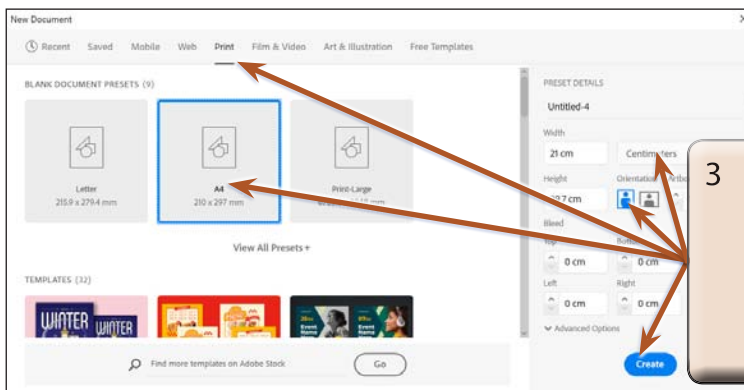
There are a range of drawing and painting tools that Adobe Illustrator provides. In this chapter we will look at the use of the PENCIL TOOL, the ERASER TOOL, the SMOOTH TOOL and SMOOTH effects, the WIDTH TOOL, the PAINTBRUSH TOOL, the LIVE PAINT BUCKET and the JOIN TOOL.

When you create drawings in Illustrator you create a series of PATHS. A path is made up of one or more straight or curved lines, which can be closed (for example, a rectangle) or open with end points (called anchor points) at each end.

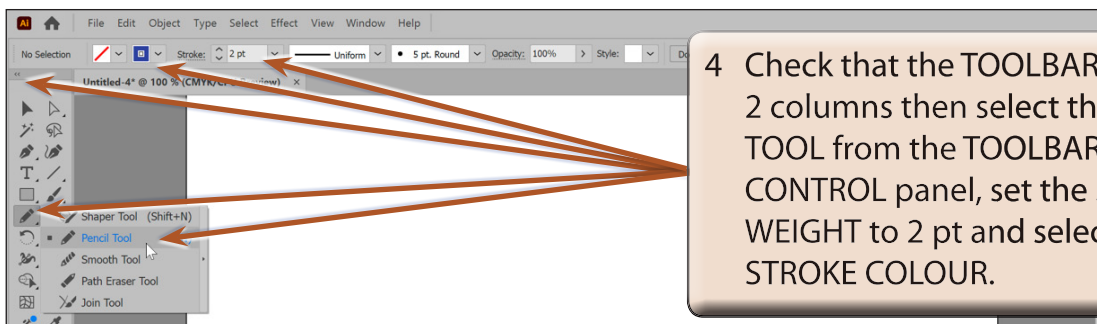
The Pencil Tool

The PENCIL TOOL lets you draw freely on the Artboard. Anchor points are added to the paths that you draw.

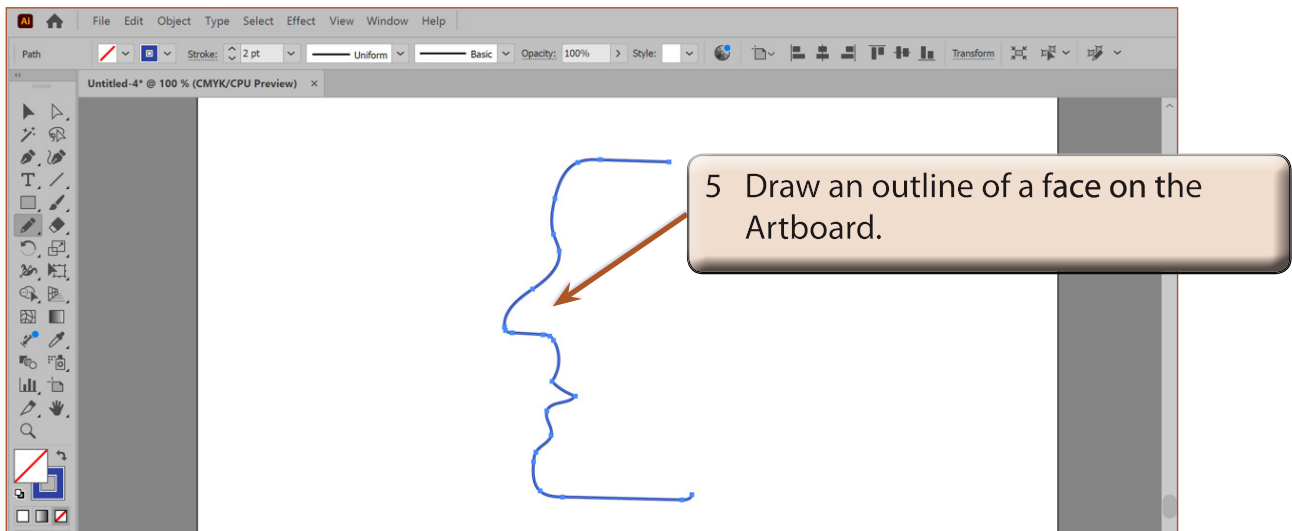
- 1 Load Adobe Illustrator or close the current document.
- 2 Select NEW FILE from the WELCOME screen or NEW from the FILE menu to start a new document.



- 3 Select the PRINT profile followed by the A4 preset (or the paper size your printer uses), set the UNITS to CENTIMETRES, the ORIENTATION to PORTRAIT and select CREATE.



- 4 Check that the TOOLBAR is set to 2 columns then select the PENCIL TOOL from the TOOLBAR and, in the CONTROL panel, set the STROKE WEIGHT to 2 pt and select a dark STROKE COLOUR.



NOTE:

- i The outline does not need to be accurate. The **SMOOTH** and **ERASER TOOLS** will be used shortly to improve it.
- ii Notice that a series of anchor points have been added to the paths. These anchor points can be clicked on using the **DIRECT SELECTION TOOL** and adjusted if need be.

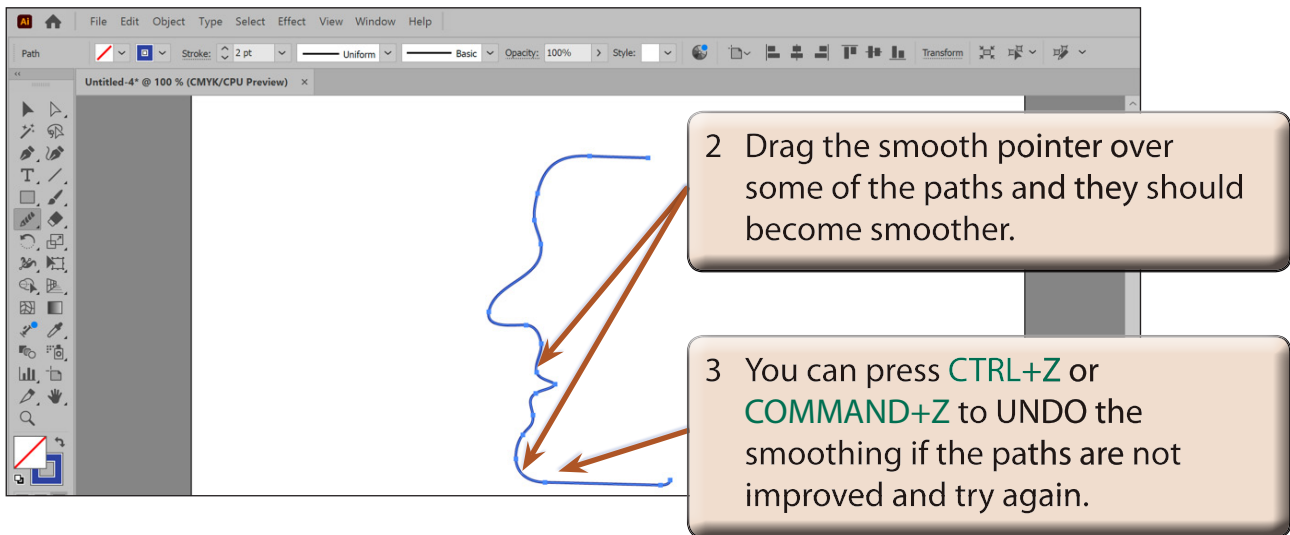
The Smooth Features

The **SMOOTH** features allow you to smooth the paths so that the curves are more accurate.

A The Smooth Tool

The **SMOOTH TOOL** allows you to draw over lines to smooth them.

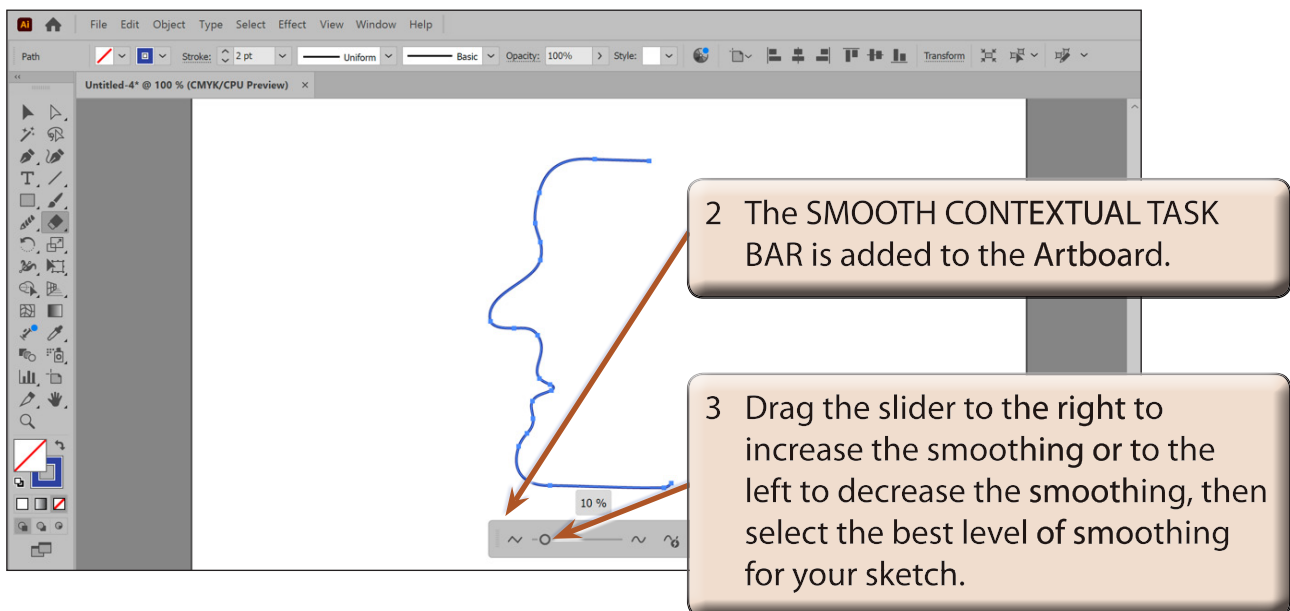




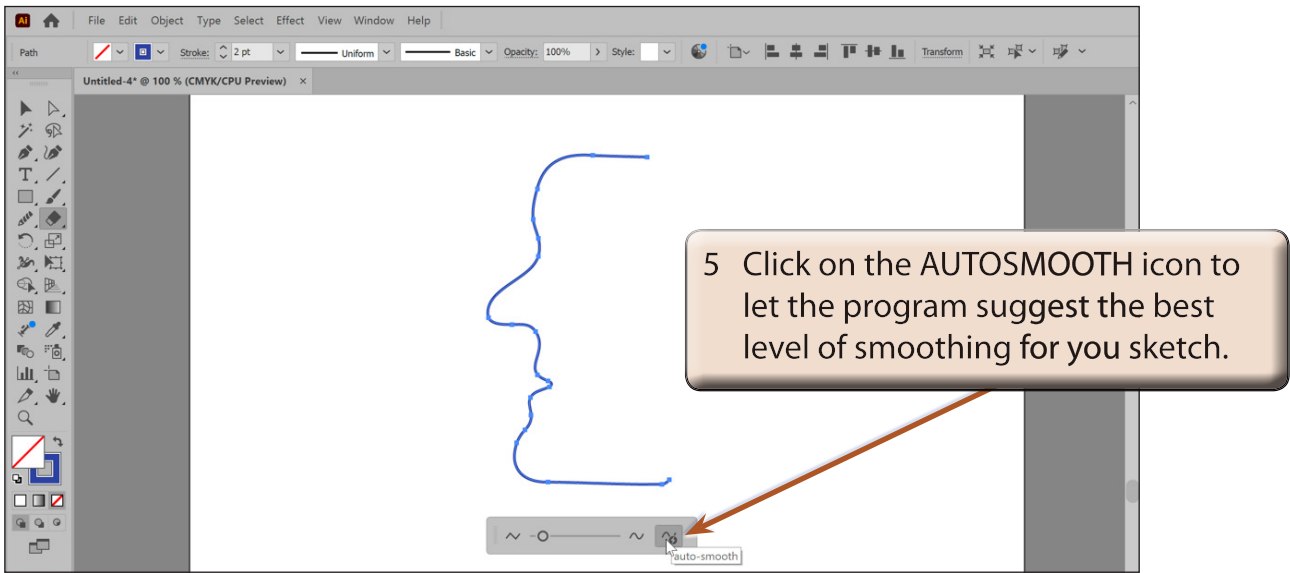
B AutoSmooth

The AUTOSMOOTH feature provides you with more control over the smoothing of paths.

- 1 Display the OBJECT menu, highlight PATH and select SMOOTH.



- 4 Press **CTRL+Z** or **COMMAND+Z** to UNDO the smoothing.



- 6 Adjust the SMOOTH slider if you prefer a level different of smoothing to the suggested one.

C Simplifying Shapes

The SIMPLIFY feature can be used to remove anchor points, which can sometimes make it easier to smooth a shape.

- 1 Display the OBJECT menu, highlight PATH and select SIMPLIFY.

