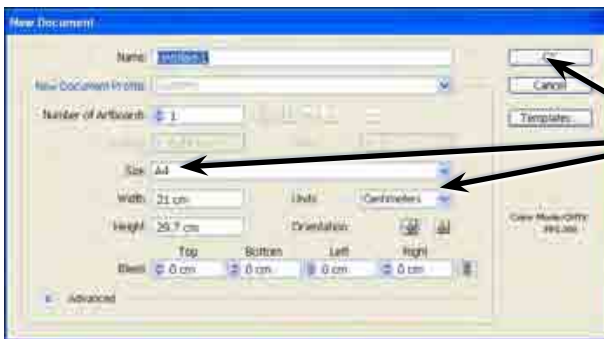


Distorting Shapes

Shapes such as drawings, images, symbols and text can be distorted to create unique and distinctive designs.

Starting a New Document

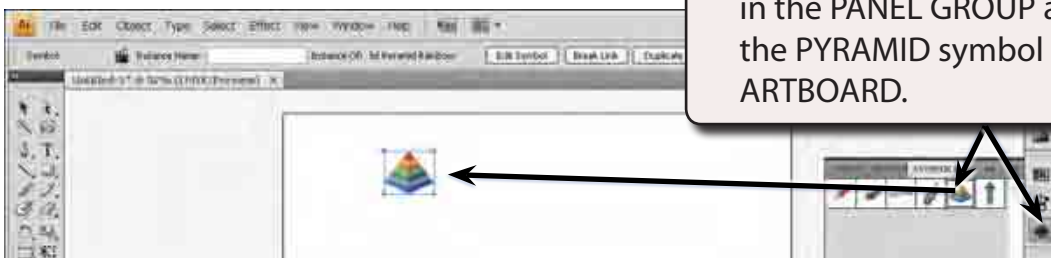
- 1 Load Adobe Illustrator CS4 or close the current document.
- 2 In the CREATE NEW section of the WELCOME screen click on PRINT DOCUMENT to start a new document.
- 3 The PRINT DOCUMENT option will ask you for the settings of the printer you will be printing to.



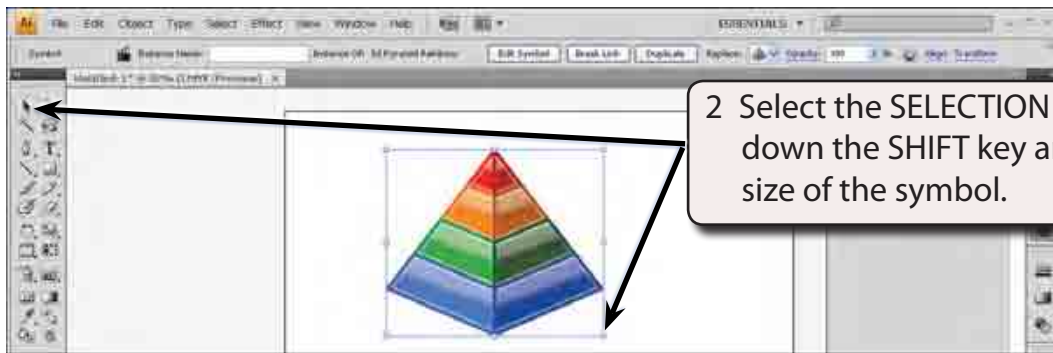
- 4 Set the SIZE to A4 (or the paper size your printer uses), the UNITS to CENTIMETRES and select OK.

Inserting a Symbol

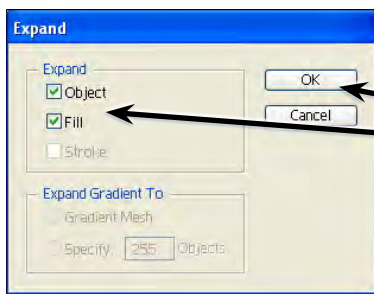
A symbol will be used as the image.



- 1 Expand the SYMBOLS panel in the PANEL GROUP and drag the PYRAMID symbol on to the ARTBOARD.

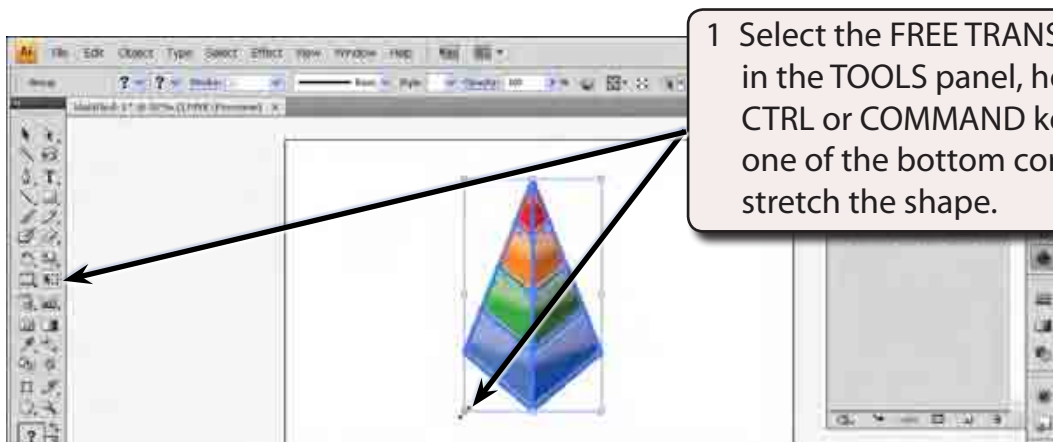


- 3 The symbol needs to be expanded so that its individual parts can be modified.
- 4 Display the OBJECT menu and select EXPAND.

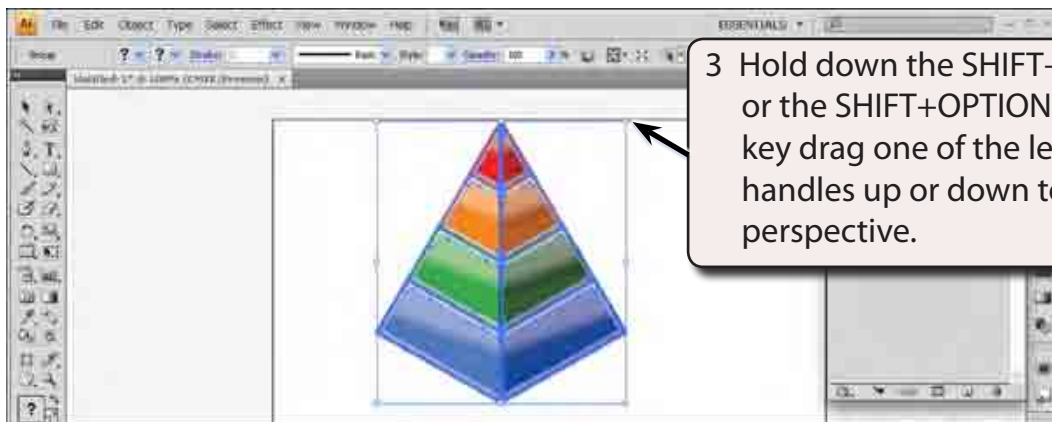


Distorting Using the Free Transform Tool

A simple way to distort shapes is to use the FREE TRANSFORM TOOL.



- 2 Press CTRL+Z or COMMAND+Z to undo that change.



3 Hold down the SHIFT+ALT+CTRL key or the SHIFT+OPTION+COMMAND key drag one of the left corner handles up or down to distort in perspective.

- 4 Press CTRL+Z or COMMAND+Z to undo that change.

Distorting Using the Liquify Tools

The LIQUIFY tools allow for more detailed distortions. These include warping, twirling, compressing, bloating and adjusting edges.

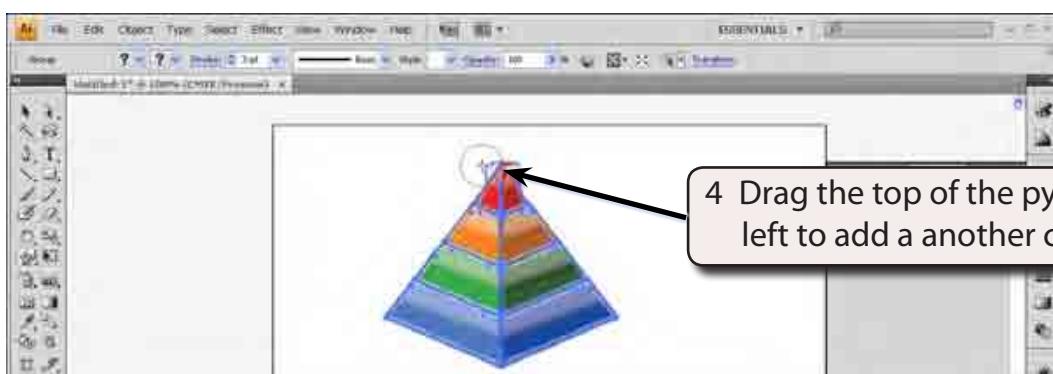
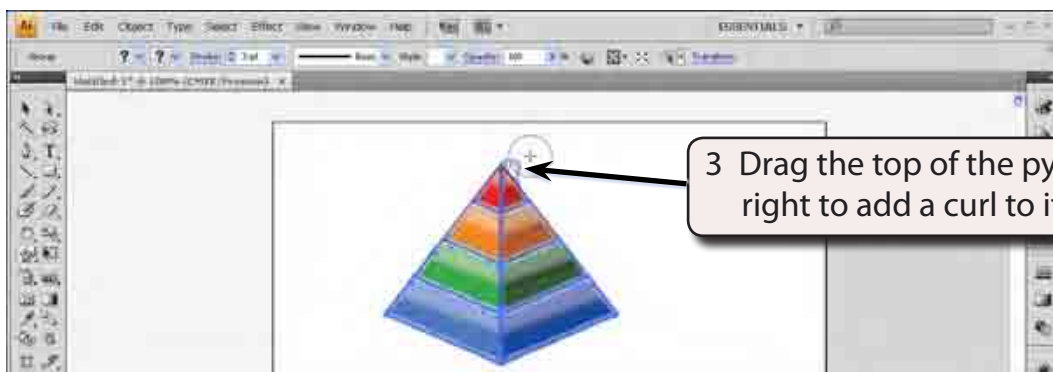
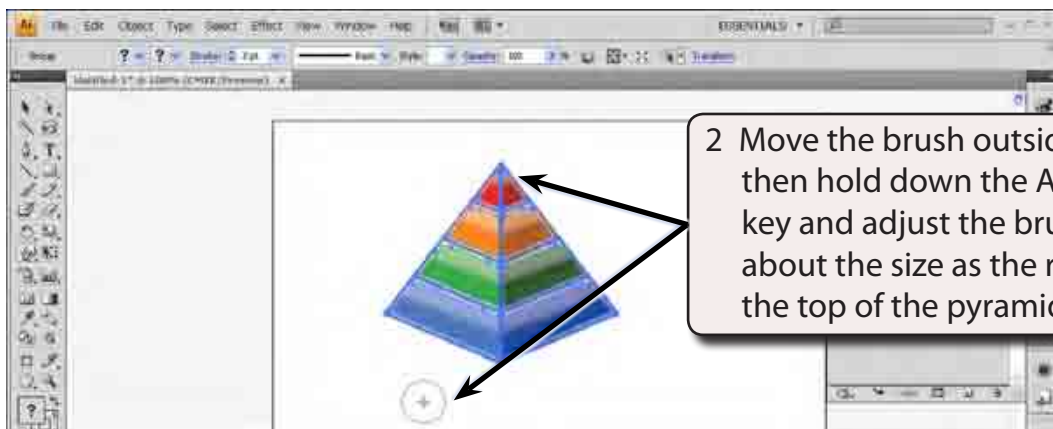
A The Warp Tool

The WARP TOOL allows you to push or stretch part of a shape.



1 Select the WARP TOOL from the TOOLS panel.

NOTE: The pointer is changed to a brush. Changing the brush size is a little different with the LIQUIFY tools compared to other brush tools. You need to hold down the ALT or OPTION key and drag diagonally UP to increase the brush size, and hold down the ALT or OPTION key and drag diagonally DOWN to increase the brush size.



5 Press CTRL+Z or COMMAND+Z until the pyramid is returned to normal.

NOTE: You can double click on the WARP TOOL to display its options and increase the SIMPLIFY value if you want the warp to be longer.