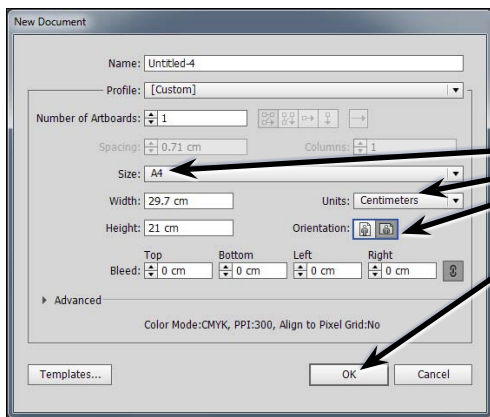


Perspective Drawing

The PERSPECTIVE GRID TOOL allows you to place a grid on the ARTBOARD to help create drawings with depth. In this chapter the different components of the grid will be explained then a drawing created using the perspective grid.

Starting a New Document

- 1 Load Adobe Illustrator CS6 or close the current document.
- 2 Display the FILE menu and select NEW to start a new document.

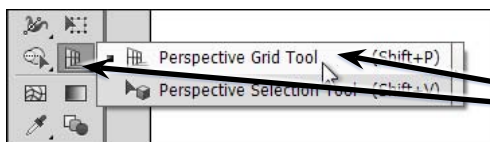


- 3 Set the SIZE to A4 (or the paper size your printer uses), the UNITS to CENTIMETRES, the ORIENTATION to LANDSCAPE and select OK.

The Perspective Grid

Before starting to draw using the PERSPECTIVE GRID you need to have a basic understanding of its sections.

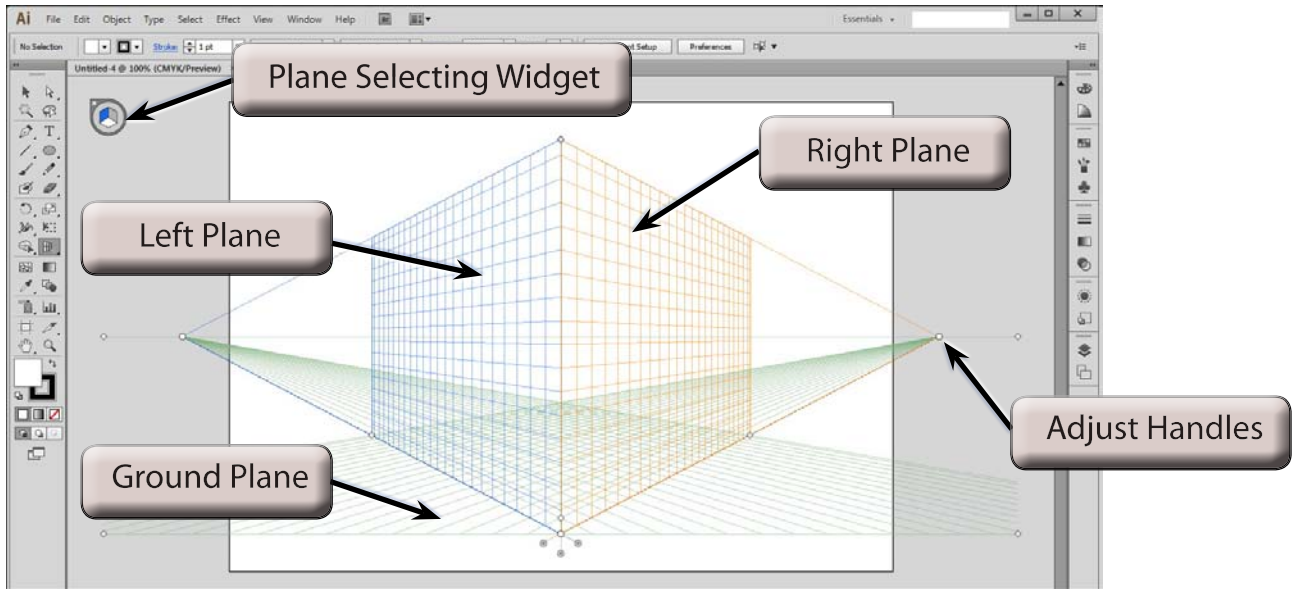
A Displaying the Grid



- 1 Click and hold on the PERSPECTIVE GRID TOOL in the TOOLS panel and the PERSPECTIVE tools are displayed. Select the PERSPECTIVE GRID TOOL to add the grid to the ARTBOARD.

NOTE: The PERSPECTIVE SELECTION TOOL is used to select objects on the perspective grid.

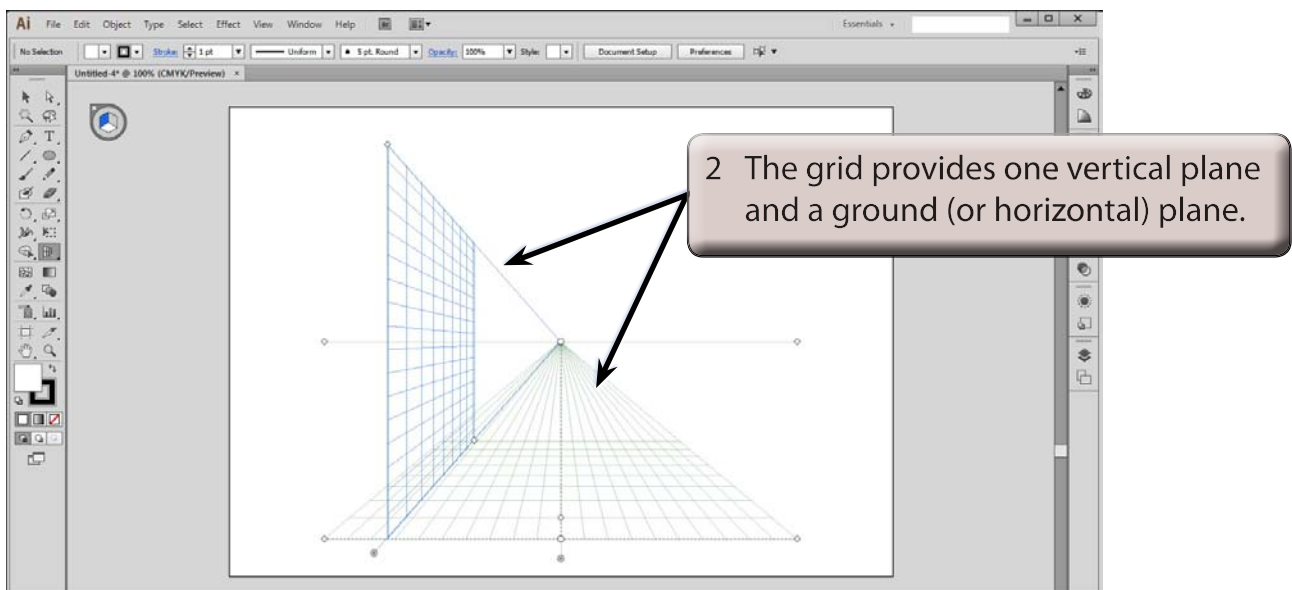
- 2 Press the CTRL- or COMMAND- to adjust the zoom so that you can see all the sections of the grid. Some of the sections of the PERSPECTIVE GRID are labelled in the following diagram.



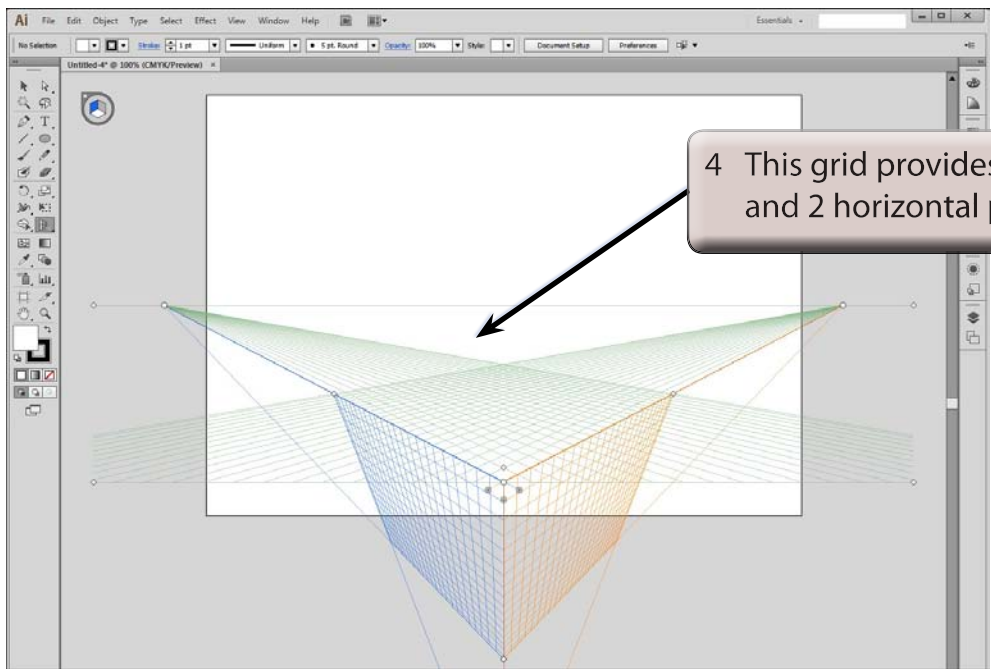
B The Different Perspective Grids

There are three different types of perspective grids that can be applied to the ARTBOARD, a 1-point grid, a 2-point grid and a 3-point grid.

- 1 Display the VIEW menu, highlight PERSPECTIVE GRID, highlight ONE POINT PERSPECTIVE and select [1P-NORMAL VIEW].



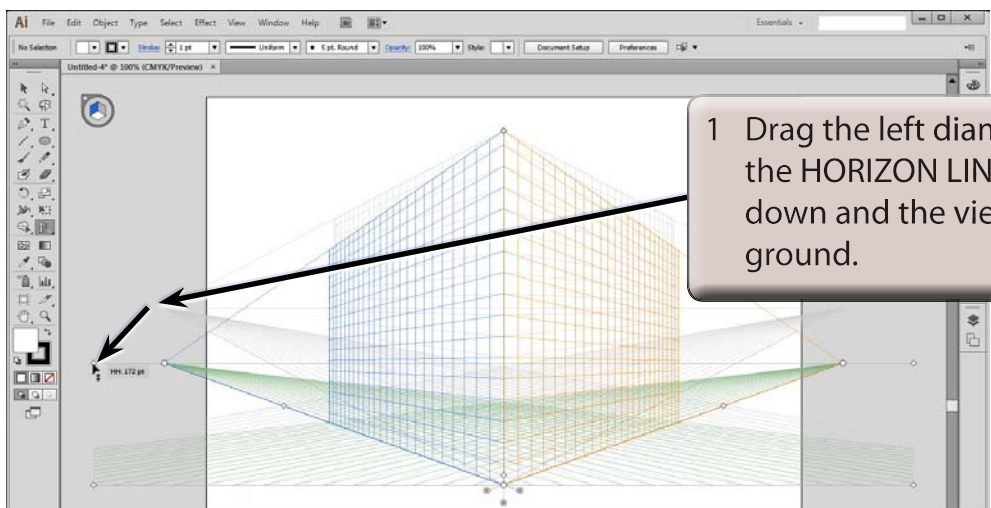
- 3 Display the VIEW menu, highlight PERSPECTIVE GRID, highlight THREE POINT PERSPECTIVE and select [3P-NORMAL VIEW].

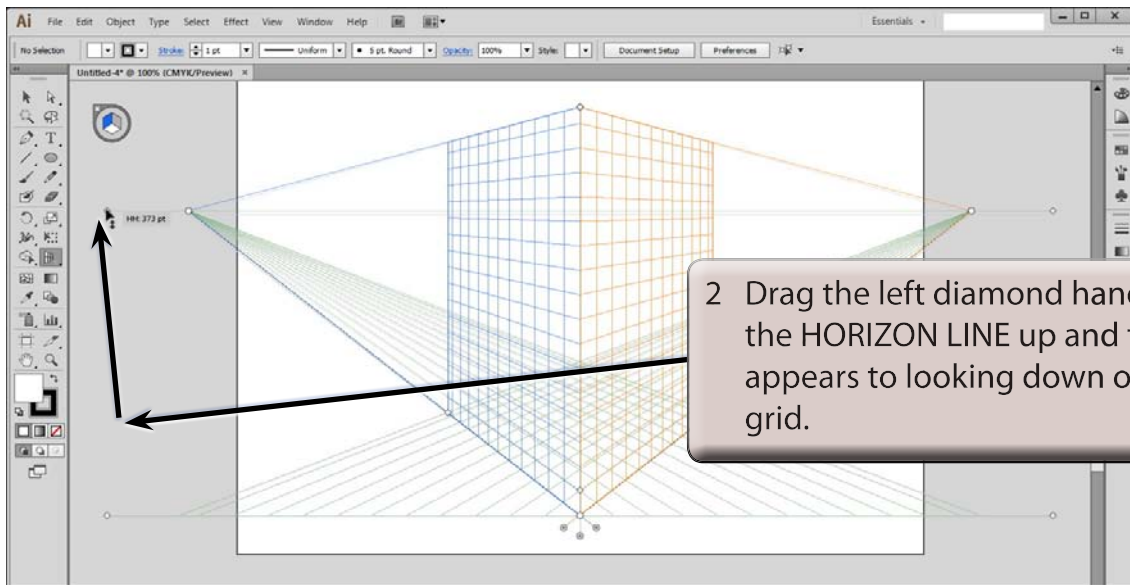


- 5 Display the VIEW menu, highlight PERSPECTIVE GRID, highlight TWO POINT PERSPECTIVE and select [2P-NORMAL VIEW]. This is the default PERSPECTIVE GRID and it provides 2 vertical planes and 1 horizontal plane.

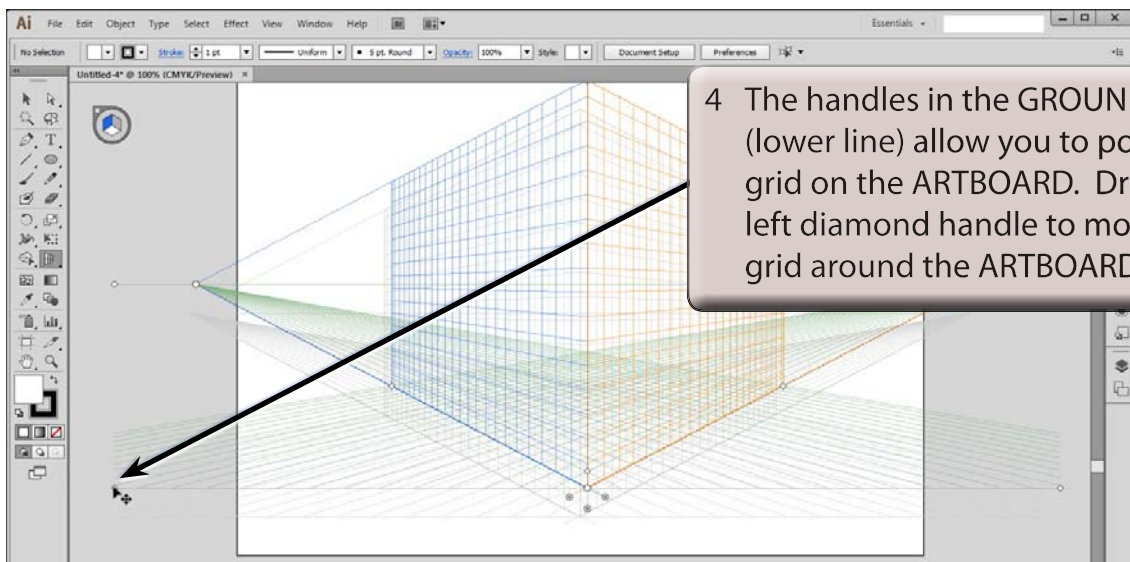
C The View Lines

There are 2 view lines on the 2-point perspective grid which run horizontally across the grid - the GROUND VIEW line (lower line) and the HORIZON (or EYE-VIEW) line.





3 Press CTRL+Z or COMMAND+Z until the grid is returned to its original setting.



5 Press CTRL+Z or COMMAND+Z until the grid is returned to its original position.