

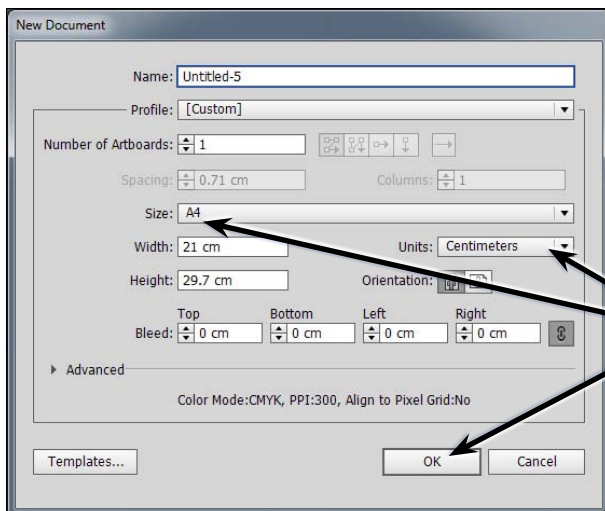
The Blob Brush Tool

The BLOB BRUSH TOOL acts like a paint tool in a painting program, such as Adobe Photoshop, producing closed shapes as you paint and those shapes can be added to. The BLOB BRUSH TOOL also lets you combine multiple shapes into one shape.

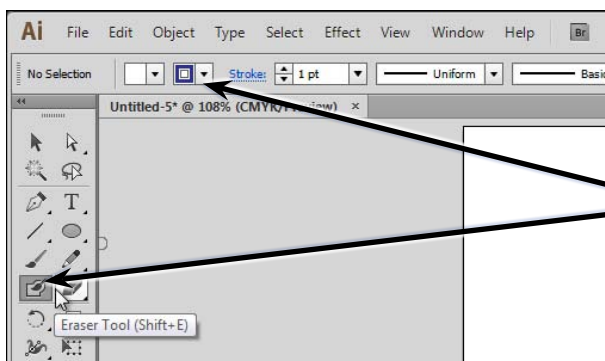
Using the Blob Brush Tool

A Painting Shapes

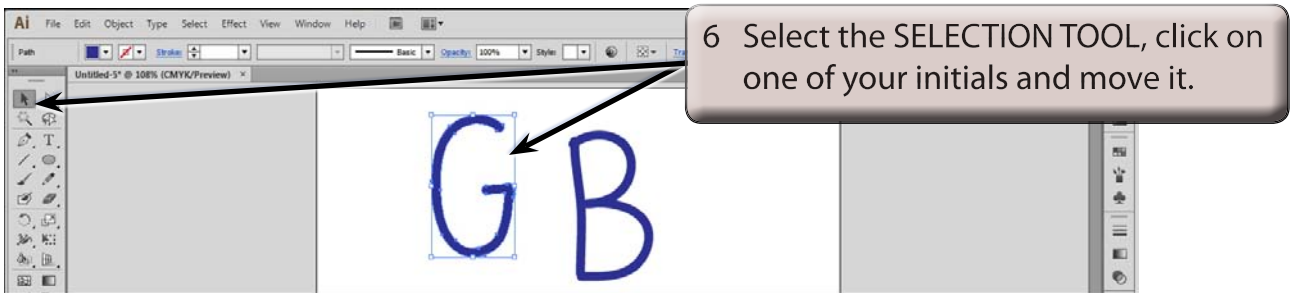
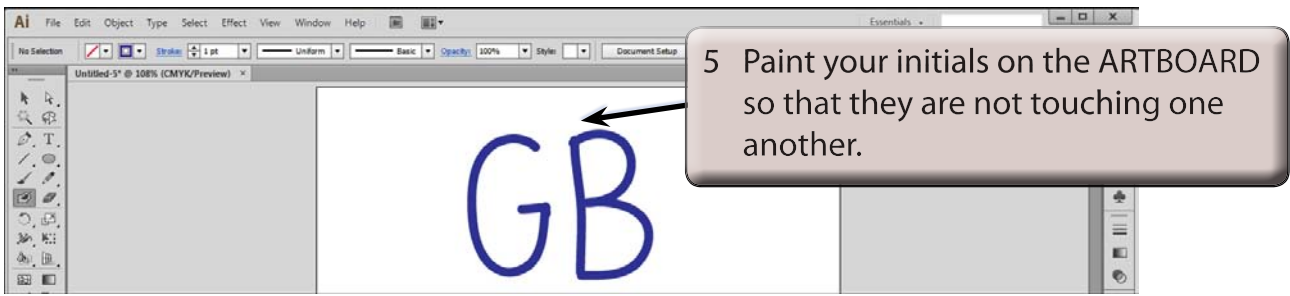
- 1 Load Adobe Illustrator CS6 or close the current document.
- 2 Display the FILE menu and select NEW to start a new document.



3 Set the SIZE to A4 (or the paper size your printer uses), the UNITS to CENTIMETRES and select OK.



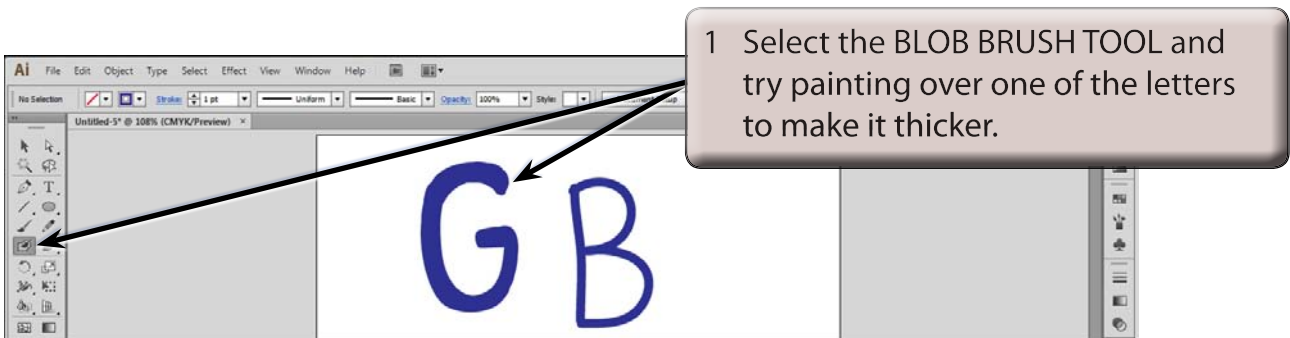
4 Select the BLOB BRUSH TOOL from the TOOLS panel and, in the CONTROL panel, select a STROKE COLOUR.

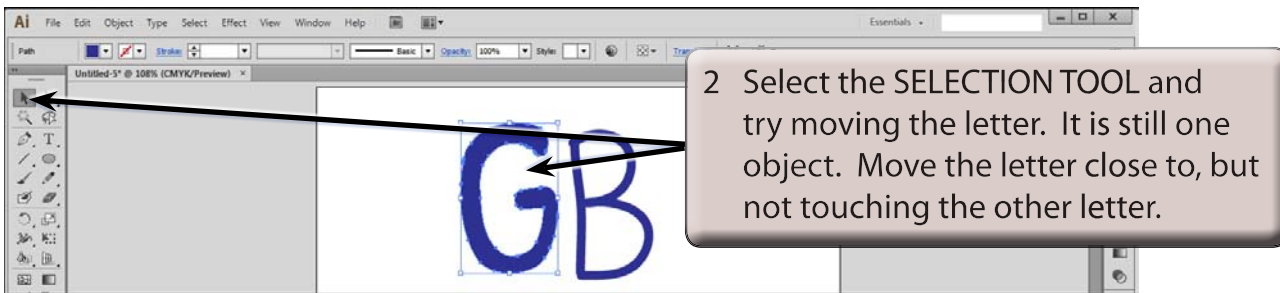


NOTE: Each letter is a separate object just as the PAINTBRUSH TOOL would have created.

B Adjusting the Letters

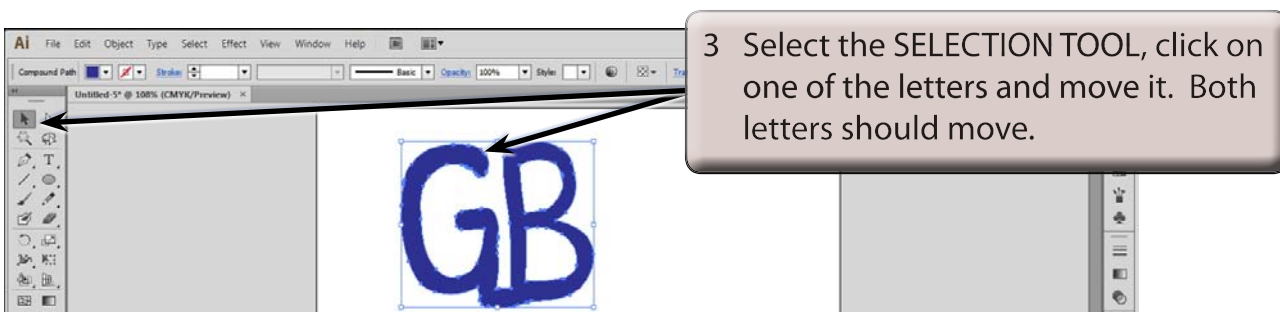
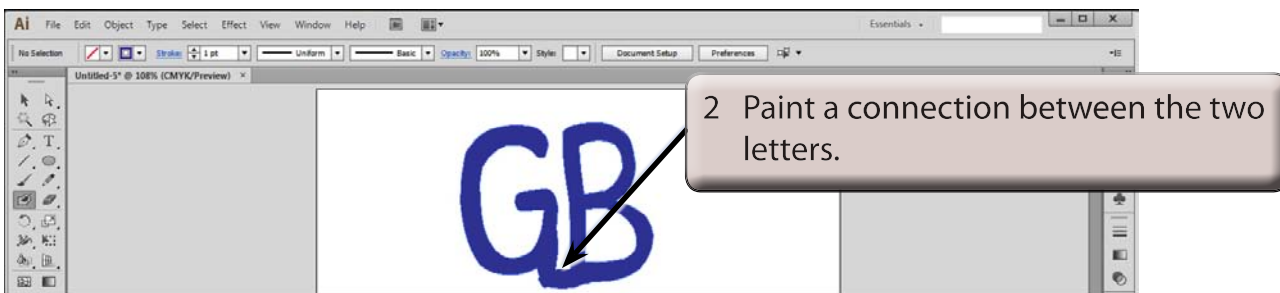
The advantage of the BLOB BRUSH TOOL over the PAINTBRUSH TOOL is that you can add paint to the existing objects.





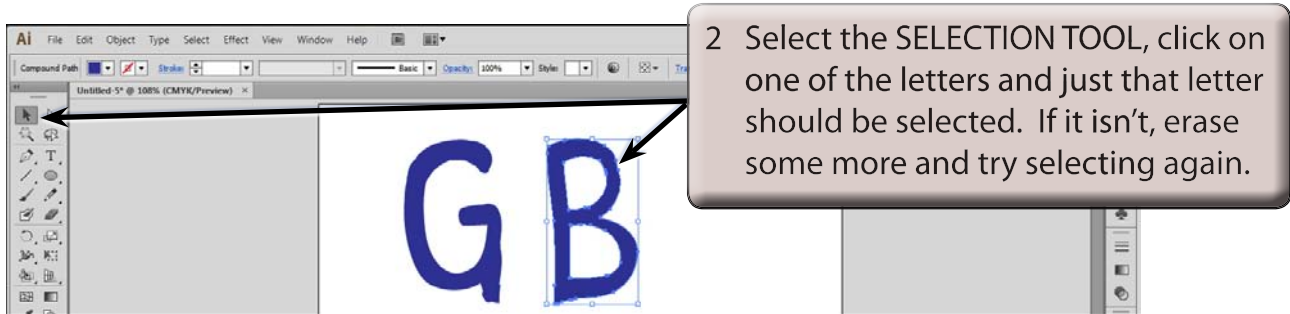
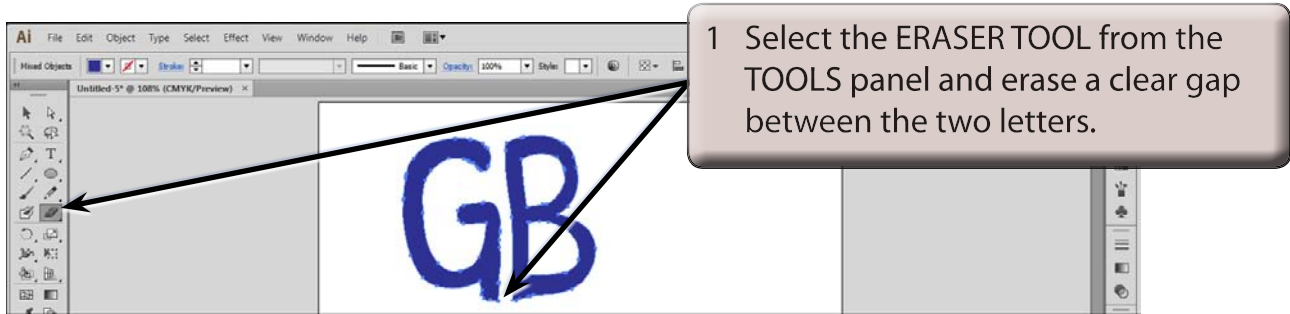
C Combining Objects

The BLOB BRUSH TOOL can be used to combine one object into another so long as their colours are very similar. Let's combine the two initials into one object



D Splitting the Letters

The letters can easily be returned to two separate objects.



Modifying Text With the Blob Brush Tool

You can create some interesting text effects by using the BLOB BRUSH TOOL to adjust the letters. Let's create a simple poster for a horror movie.

A Entering the Text

- 1 Close the current document, saving it if you wish to.
- 2 Start a NEW document using the same settings as those on page 5-1.

