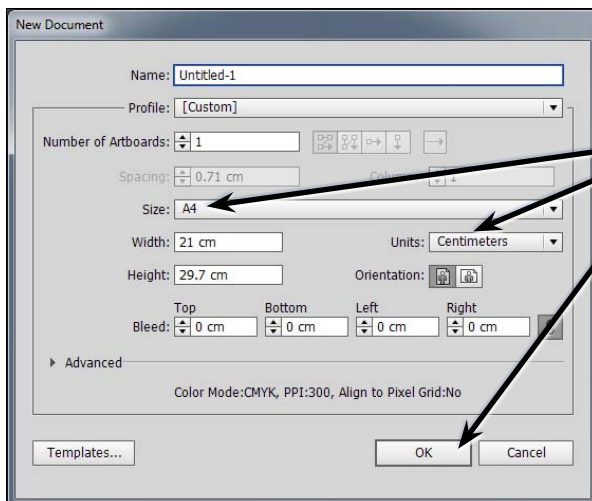


# Fills, Gradients and Effects

Adobe Illustrator provides a wide range of ways to fill objects and apply effects to them to make the objects look more realistic. In this chapter you will learn how to fill objects with colours and gradients, and how to apply effects to those objects.

## Starting a New Document

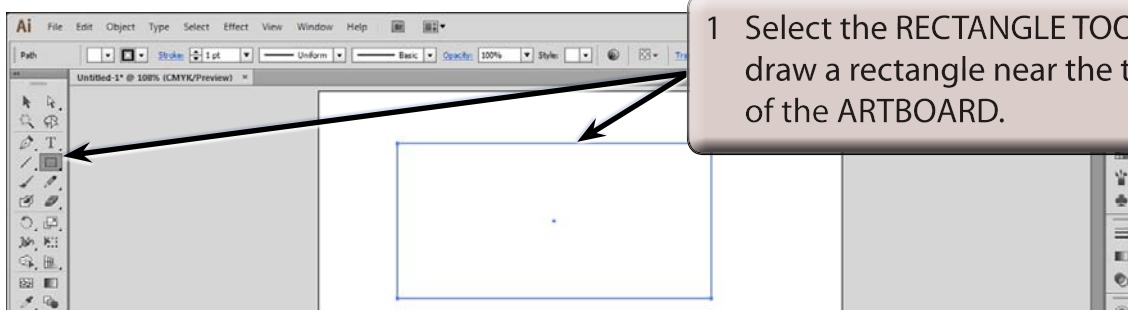
- 1 Load Adobe Illustrator CS6 or close the current document.
- 2 Display the FILE menu and select NEW to start a new document.



- 3 Set the SIZE to A4 (or the paper size your printer uses), the UNITS to CENTIMETRES and select OK.

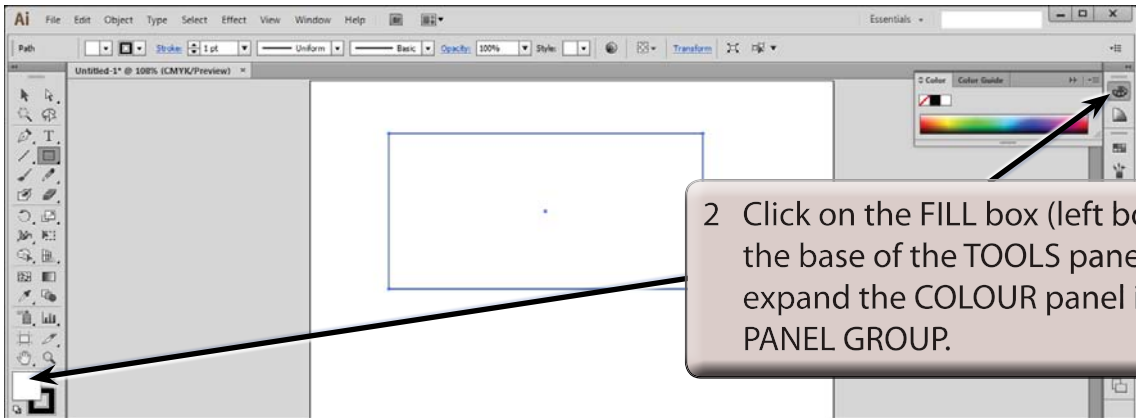
## Filling Objects

Objects can be filled using the CONTROL panel or the tools at the base of the TOOLS panel.

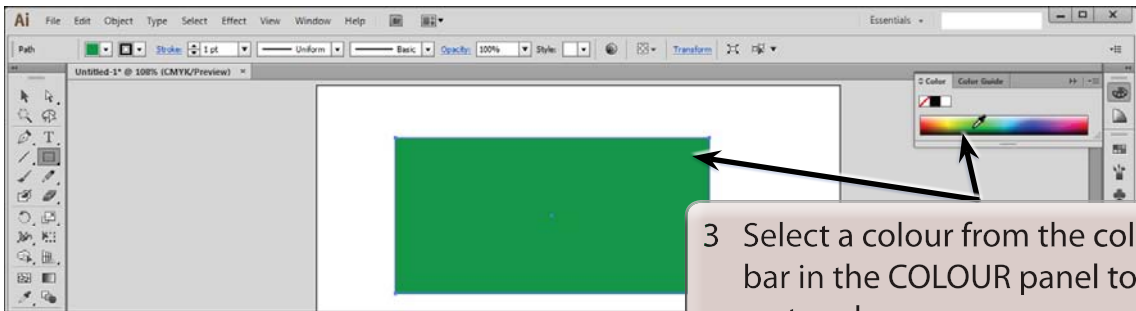


- 1 Select the RECTANGLE TOOL and draw a rectangle near the top centre of the ARTBOARD.

**NOTE: The default settings for the rectangle are a WHITE fill and a thin BLACK stroke (border).**



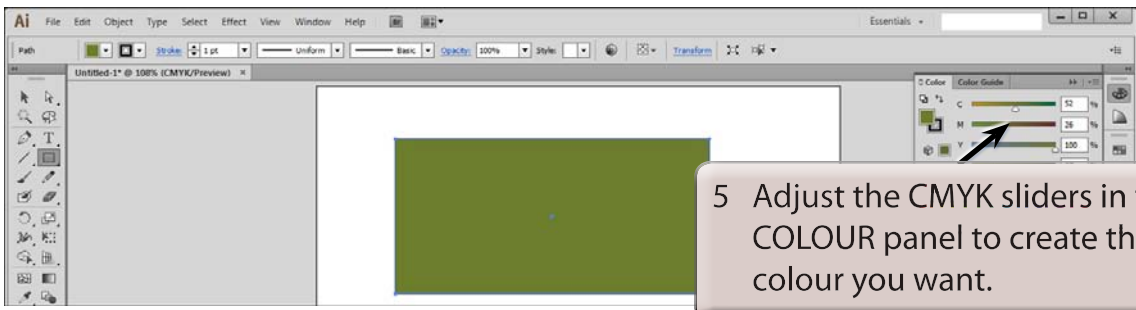
2 Click on the FILL box (left box) at the base of the TOOLS panel and expand the COLOUR panel in the PANEL GROUP.



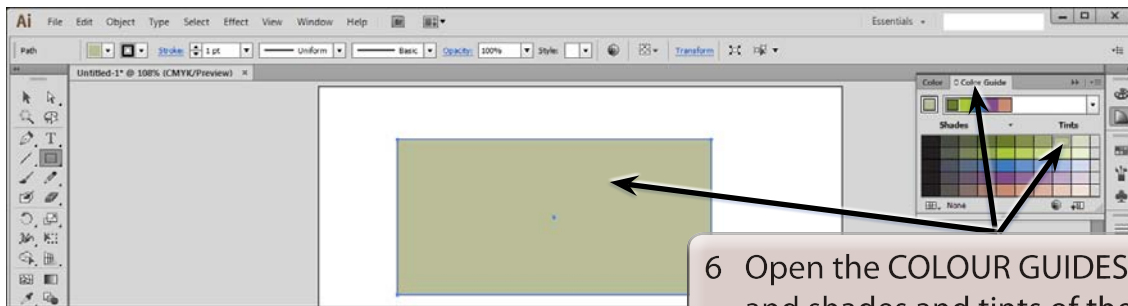
3 Select a colour from the colour bar in the COLOUR panel to fill the rectangle.



4 Click on the PANEL MENU icon at the top right of the COLOUR panel and select SHOW OPTIONS.



5 Adjust the CMYK sliders in the COLOUR panel to create the fill colour you want.

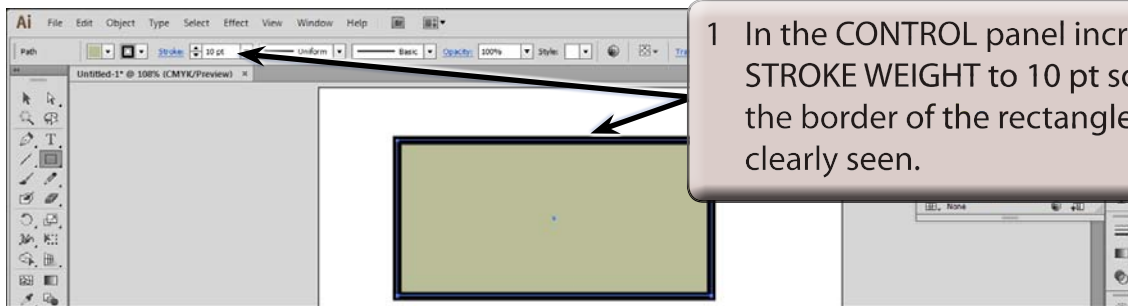


6 Open the COLOUR GUIDES panel and shades and tints of the current colour are provided, select one.

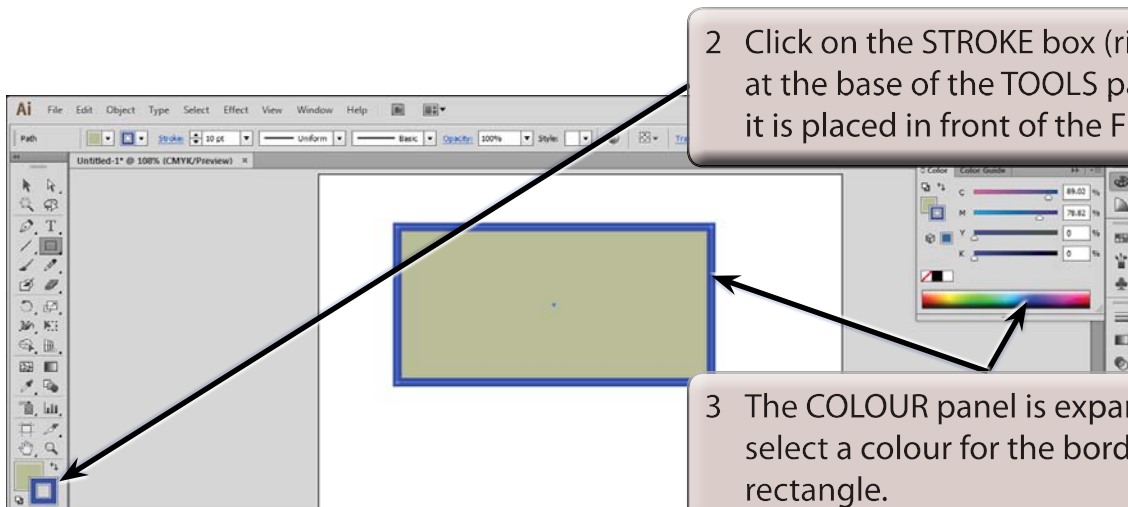
## Strokes

### A Applying Stroke Colours

Stroke colour can be applied to objects in the same way as fills.



1 In the CONTROL panel increase the STROKE WEIGHT to 10 pt so that the border of the rectangle can be clearly seen.



2 Click on the STROKE box (right box) at the base of the TOOLS panel and it is placed in front of the FILL box.

3 The COLOUR panel is expanded, select a colour for the border of the rectangle.

## B Stroke Alignment

The default setting for the border of an object is for it to be centred around the fill. This means that half the border covers the fill and the other half is outside the fill. This can be altered when needed.

