

Alternate Layouts

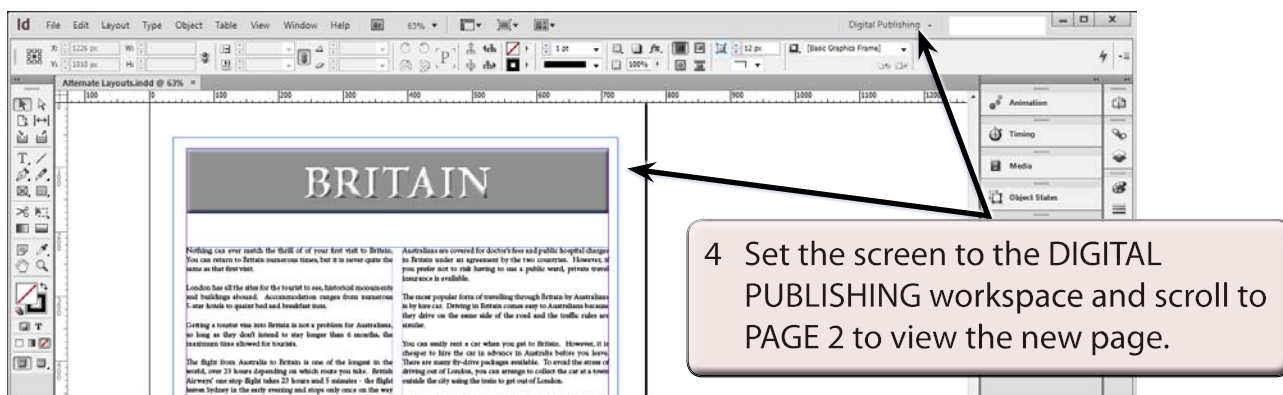
Alternate layouts work with Liquid Layouts. They allow you to create different versions of the one layout within the same document and use the Liquid Page Rules to adjust the new layouts.

An obvious example of this is the creation of different orientation documents for viewing vertically and horizontally on tablets. In the previous chapter the views were saved in separate files. With Alternate Layouts many different views of the one layout can be stored within the one document.

Loading the Prepared File

A document setup to be viewed vertically on an iPad has been prepared for you and Alternate Layouts will be used to create a horizontal view for the iPad and vertical and horizontal views for an Android tablet. The document has an extra page to the front cover that you used in the previous chapter.

- 1 Load Adobe InDesign or close the current document.
- 2 Display the FILE menu and select OPEN or click on OPEN in the OPEN A RECENT ITEM section of the WELCOME SCREEN.
- 3 Access the IDcs6 SUPPORT FILES, open the CHAPTER 18 folder and load the ALTERNATE LAYOUT file.



NOTE: Object-Based Liquid Page Rules have been applied to each object on the two pages.

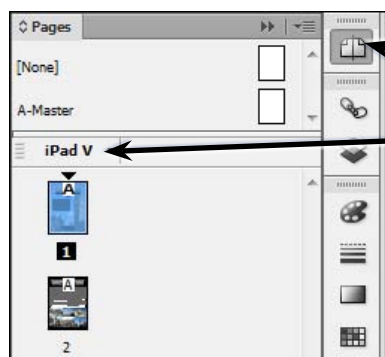
- 5 Scroll back to PAGE 1.
- 6 Use SAVE AS from the FILE menu to save the document in your STORAGE folder as:

Chapter 18 Alternate Layouts

Creating a Horizontal Alternate Layout

Both pages can be converted to a horizontal (landscape) iPad orientation.

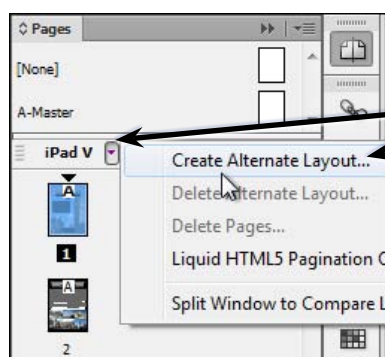
A Creating the Alternate Layout



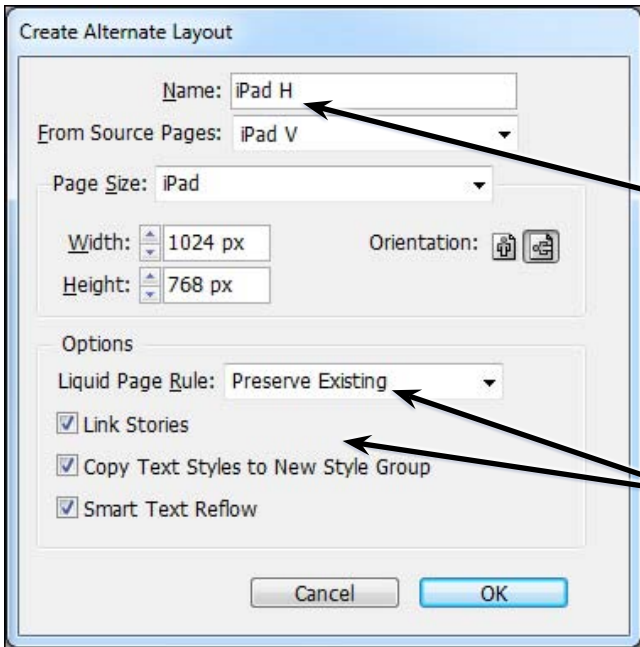
1 Expand the PAGES panel by clicking on its icon in the PANEL GROUP and notice that the top of the pages are labelled iPad V.

NOTE: i The V stands for Vertical Orientation.

ii The label at the top of the pages in the PAGES panel is inserted when the DOCUMENT SETUP is set to specific layouts.



2 Click on the arrow next to the iPad V label and select CREATE ALTERNATE LAYOUT.



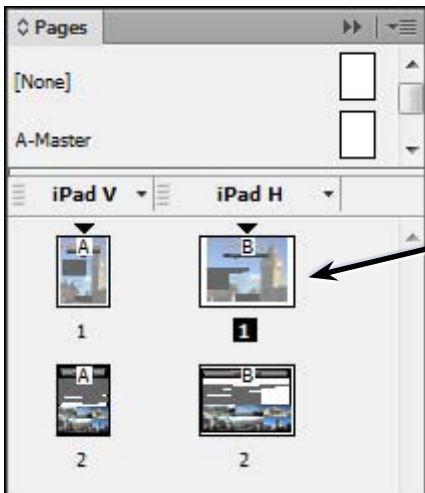
3 The program assumes that you want a horizontal version of the iPad and inserts that name.

4 You can adjust the LIQUID PAGE RULES if need be, but we need to use the existing ones and the default options will be required.

NOTE:

- i You can enter a different page NAME or select a different PAGE SIZE as you will see shortly.
- ii Alternate Layouts can also be applied by selecting CREATE ALTERNATE LAYOUT from the LAYOUT menu.

5 Select OK to return to the document.



6 The second set of pages is created with the orientation set to horizontal (landscape).

NOTE: The small grey bars at the left of the page labels can be dragged to adjust the order of the alternate layouts.

B Adjusting the New Layouts

Whenever Liquid Page Rules are used to adjust pages sizes, some manual adjustment of objects is usually required.

