

## Using Graphics in Slides

Graphics can make presentations more interesting. In this chapter you will learn how to add images and photos to slides. To demonstrate this, slides about Jungle Safaris and Wild River Rides will be added to the Wattle Valley Animal Park presentation.

### Loading the Presentation

- 1 Load Microsoft PowerPoint or close the current presentation and click on the FILE tab.
- 2 Click on OPEN OTHER PRESENTATIONS in the START window or OPEN in the BACKSTAGE VIEW.
- 3 Navigate to your STORAGE folder and open the WATTLE VALLEY AP file.

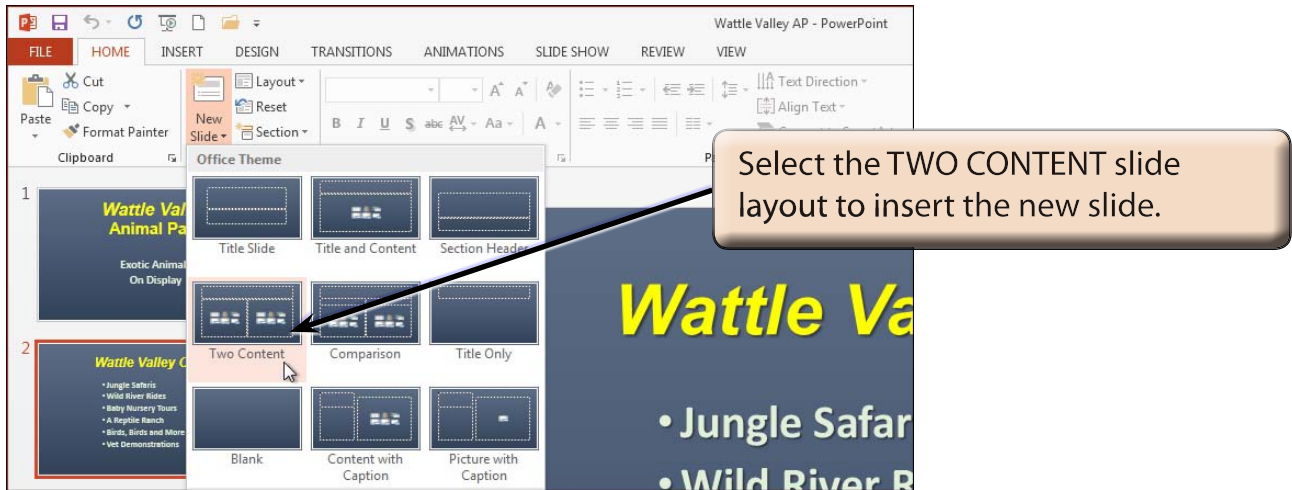
### Creating the New Slide



**NOTE:** New slides are added after the selected slide. If the first slide was selected the new slide would be placed between the two slides.

## Selecting the Slide Layout

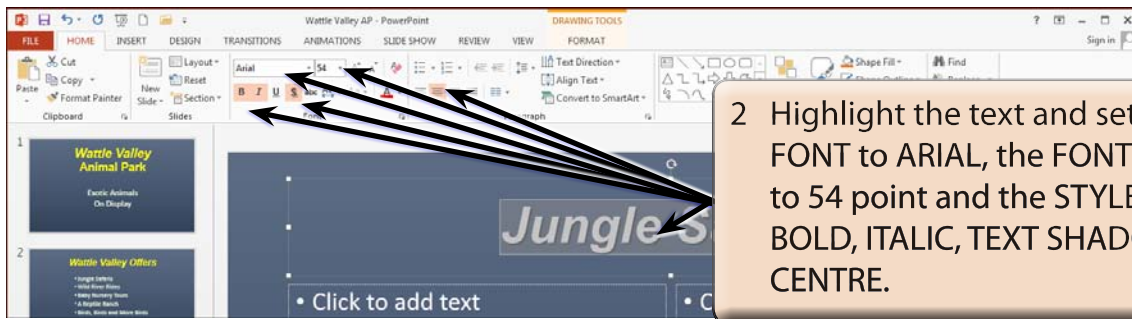
For this new slide we will need text and graphics side by side so a suitable slide layout will need to be selected.



**NOTE: CONTENT is a term to represent text, pictures, SmartArt graphics, movie clips, etc.**

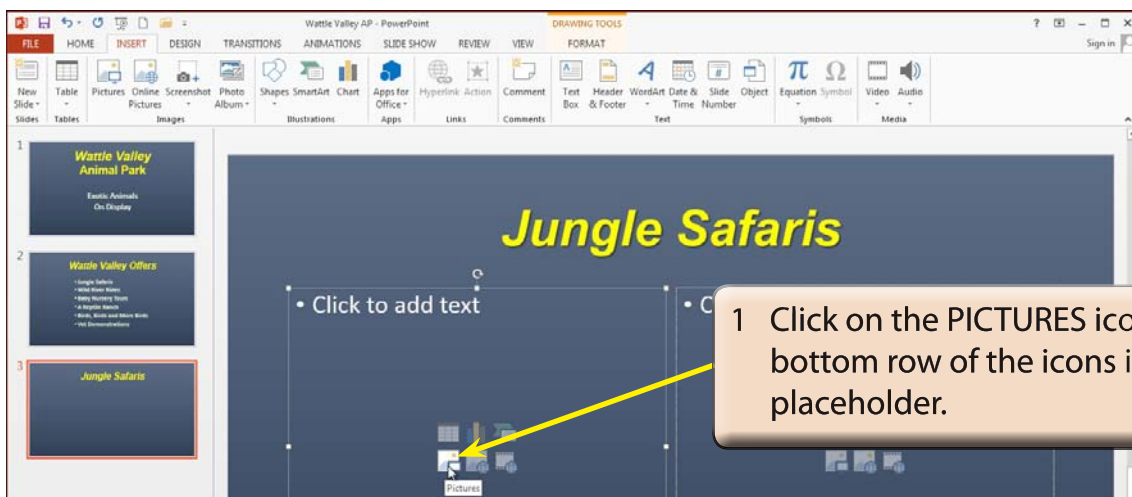
## Entering the Slide Title

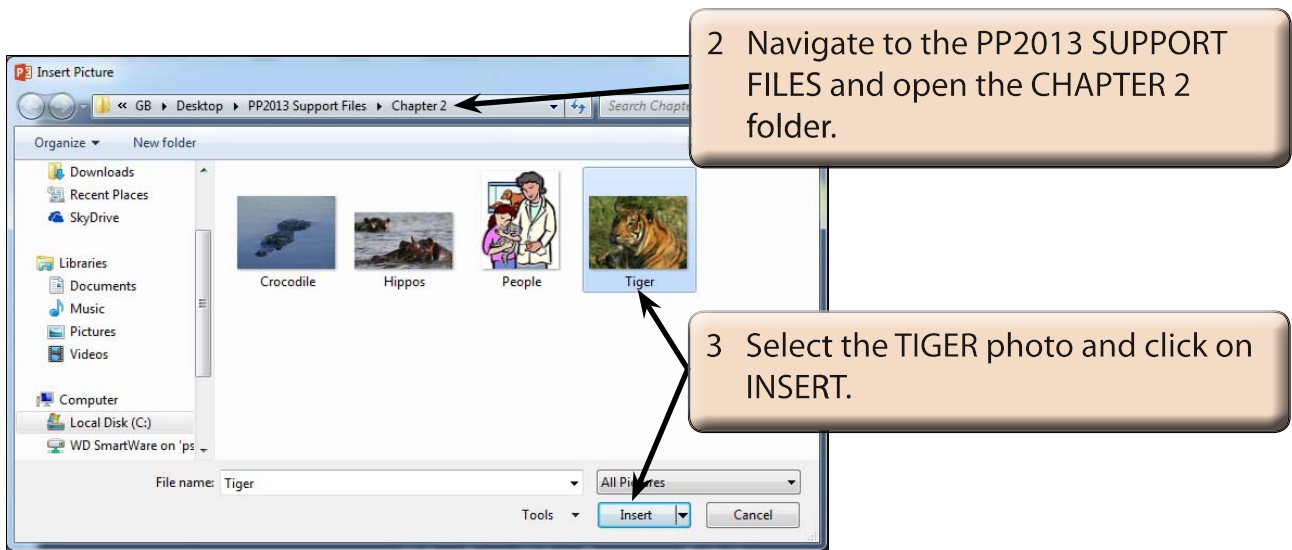




## Inserting an Image

Microsoft PowerPoint allows Photos and ClipArt images to be imported into slides. These will be imported from the PP2013 SUPPORT FILES. You might need to find out where those files are located on your system from your teacher. Or you can substitute photos from your school's graphics library.





## Adjusting the Image

The size and position of the image can be adjusted.

