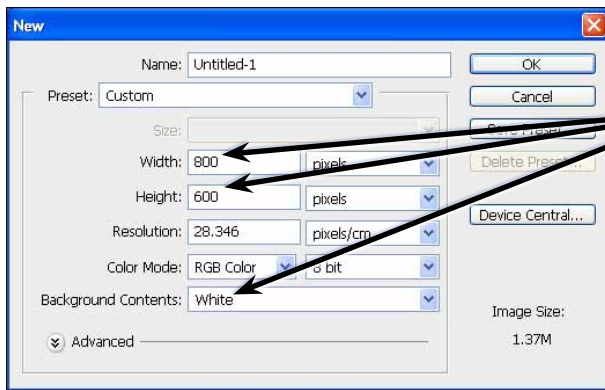


Drawing Shapes

Photoshop provides a range of shapes that can be used with photos or in the creation of your own designs. These tools allow you to create web page buttons, borders for photos, company logos, artistic designs and so on.

Starting a Blank Document

- 1 Load Photoshop or close the current file.
- 2 Display the FILE menu and select NEW.



3 Set the WIDTH to 800 pixels, the HEIGHT to 600 pixels and the BACKGROUND CONTENTS to WHITE.

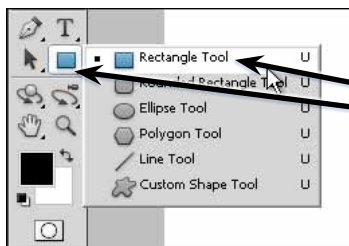
- 4 Select OK to start the document and set the zoom to FIT ON SCREEN.

Drawing Normal Shapes

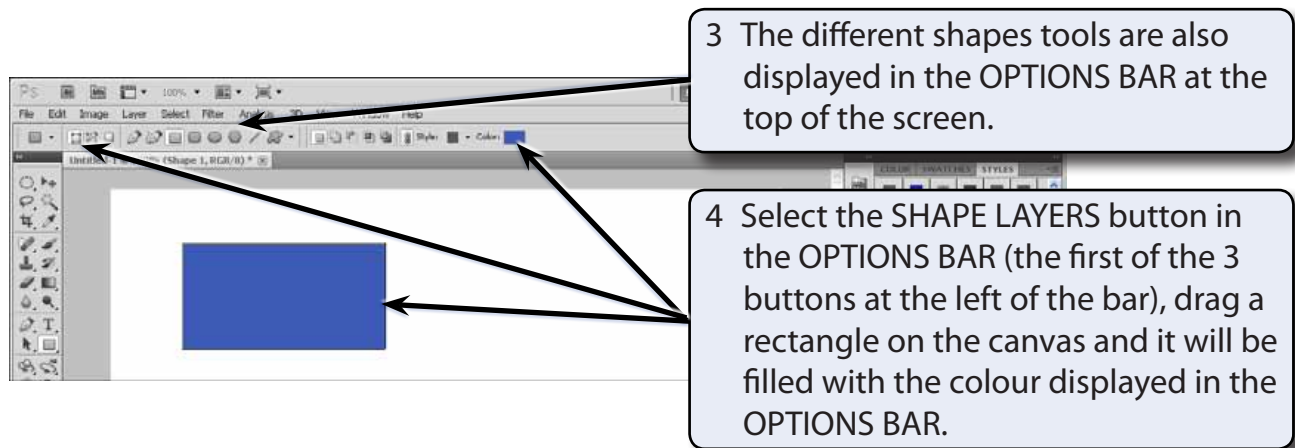
Photoshop provides the normal drawing shapes such as rectangles, ellipses, polygons and lines.

A Drawing Rectangles

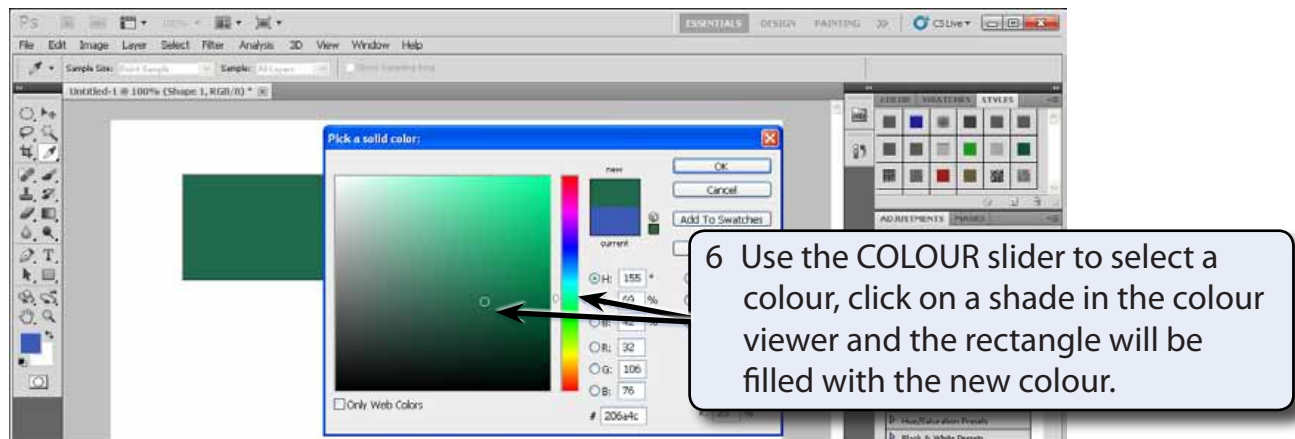
- 1 The SHAPES TOOL is at the lower section of the TOOLS panel. It may contain a rectangle, ellipse, line or custom shape depending on which tool was used last.



2 Click and hold the mouse button on the SHAPES TOOL in the TOOLS panel and select the RECTANGLE TOOL from the pop-up list of tools.



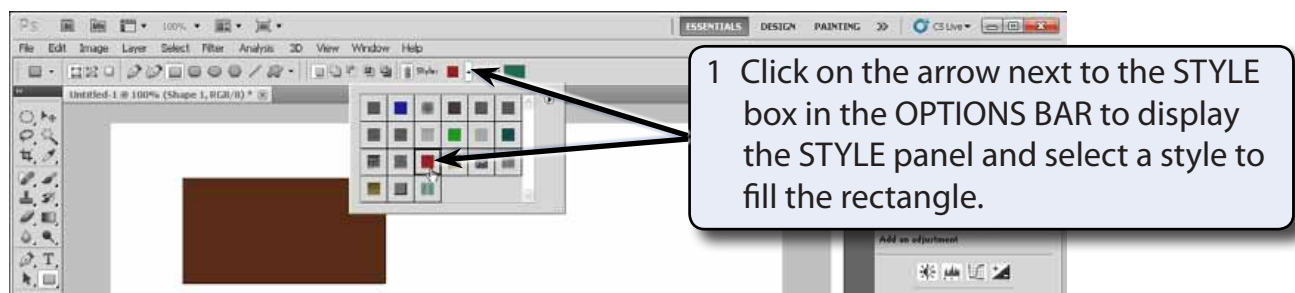
5 Click on the COLOUR box in the OPTIONS BAR.

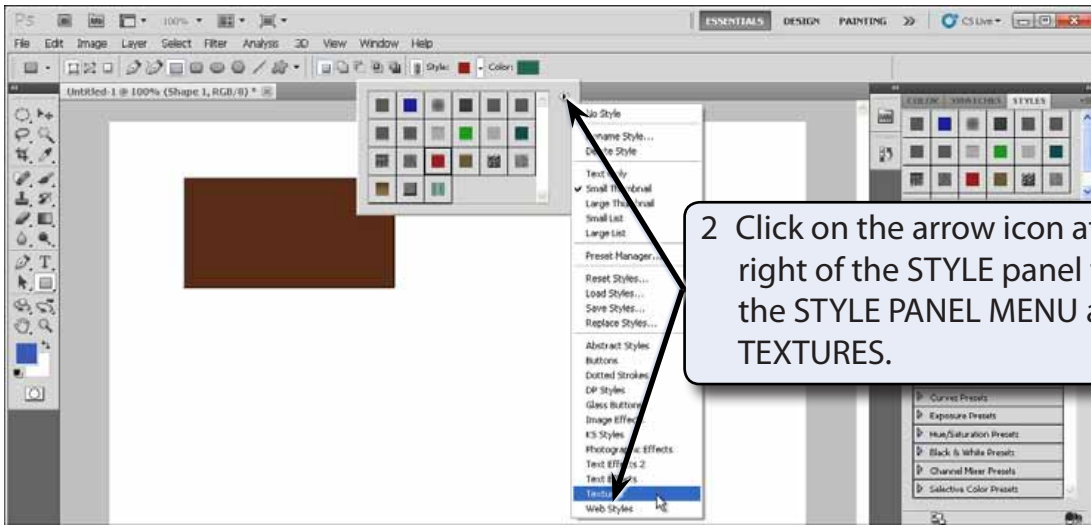


7 Select OK to accept the new colour.

B Rectangle Styles

There are numerous styles that can be applied to a shape.

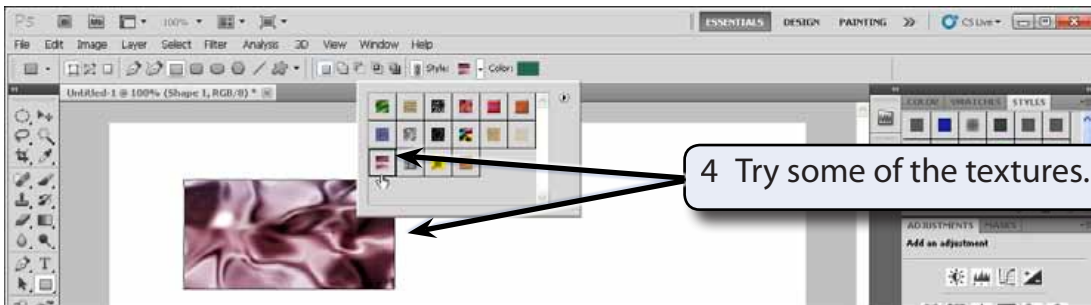




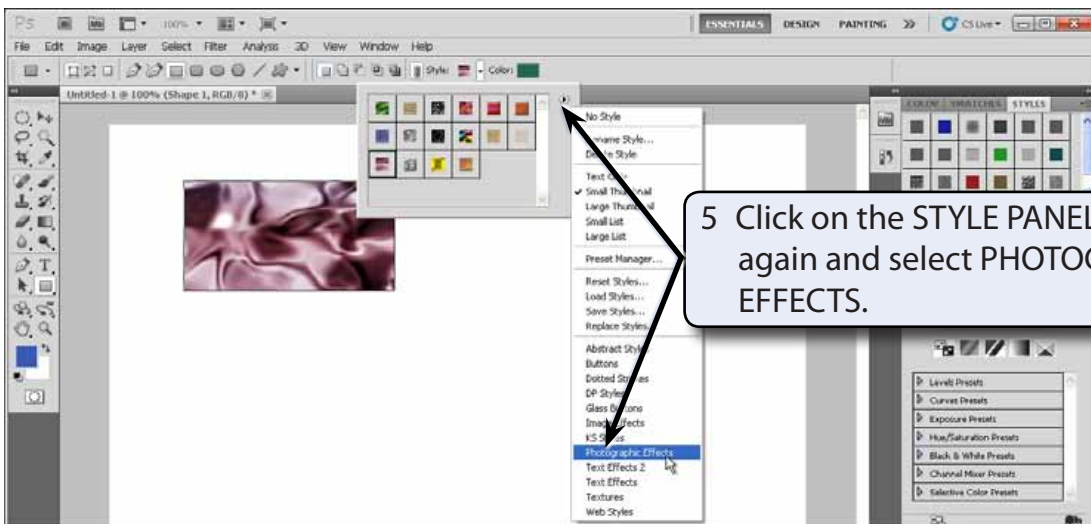
2 Click on the arrow icon at the top right of the STYLE panel to display the STYLE PANEL MENU and select TEXTURES.



3 Select OK to replace the current styles with the TEXTURES styles.



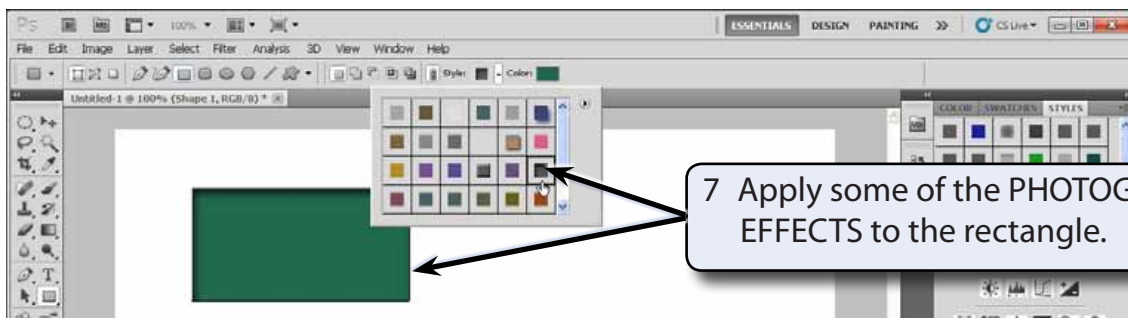
4 Try some of the textures.



5 Click on the STYLE PANEL MENU icon again and select PHOTOGRAPHIC EFFECTS.



6 Select OK to replace the TEXTURES styles with the PHOTOGRAPHIC EFFECTS styles.



7 Apply some of the PHOTOGRAPHIC EFFECTS to the rectangle.

8 Try some other styles from the STYLE PANEL MENU. Some are suitable for rectangles others are less effective.



9 Click on the STYLE PANEL MENU icon again and select RESET STYLES.



10 Select OK to return the styles to the DEFAULT STYLES.

NOTE: These styles can also be applied from the STYLES panel in the PANEL GROUP as you did in Chapter 3.