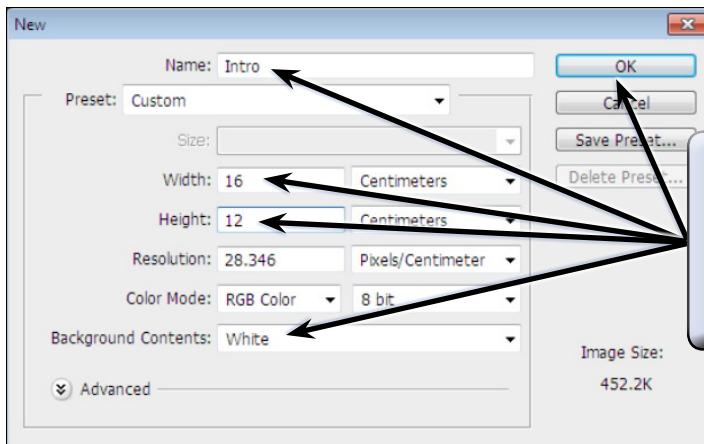


# Introduction to Photoshop

Adobe Photoshop is an advanced photo editing and graphics program that allows you to create and edit photo quality images, and create your own artwork. In this Chapter you will be introduced to its screen and some of its basic features, such as Layers. Layers are the building blocks of using Photoshop and you need to develop an understanding of how to use them in order to use Photoshop effectively.

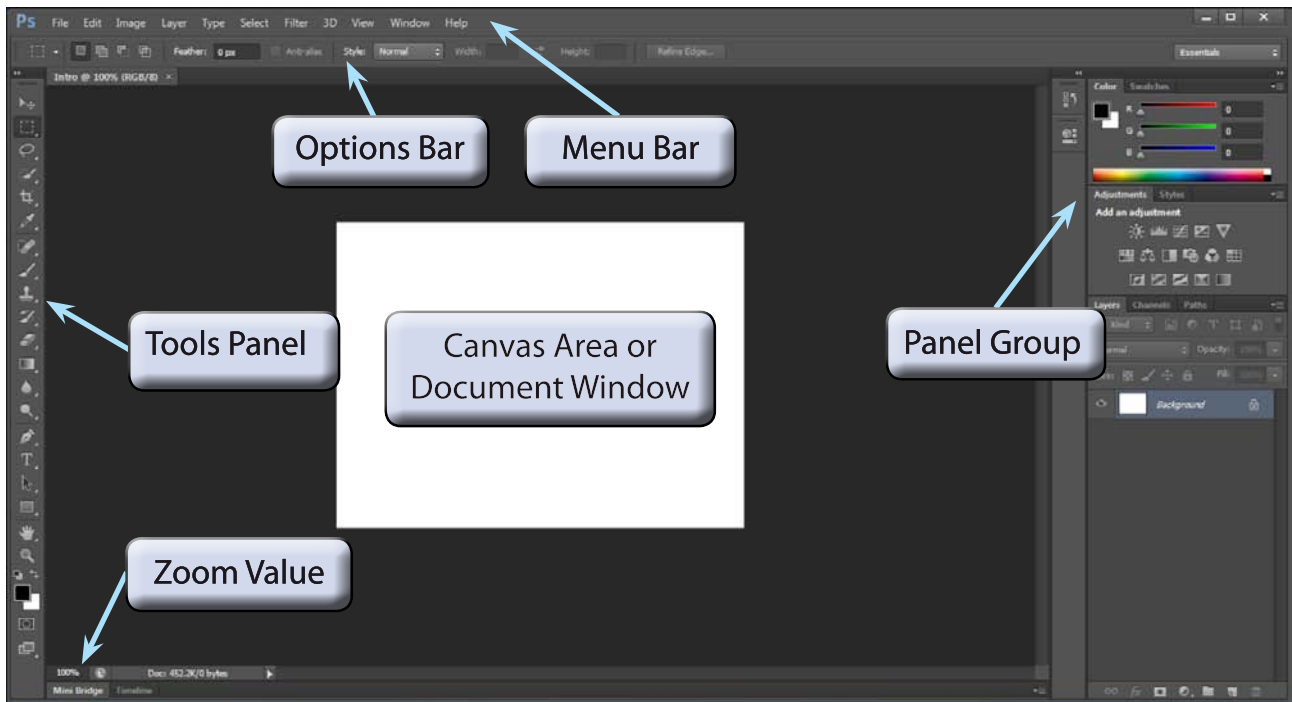
## Loading Photoshop

- 1 Load Photoshop CS6 and you will receive the Photoshop screen.
- 2 Display the FILE menu and select NEW. You will be asked to enter the required settings for the page.



- 3 Enter the page NAME: Intro  
Set the WIDTH to 16 cm, the HEIGHT to 12 cm, the BACKGROUND CONTENTS to WHITE and select OK.

- 4 A blank page should be created. The diagram at the top of the next page labels its sections.



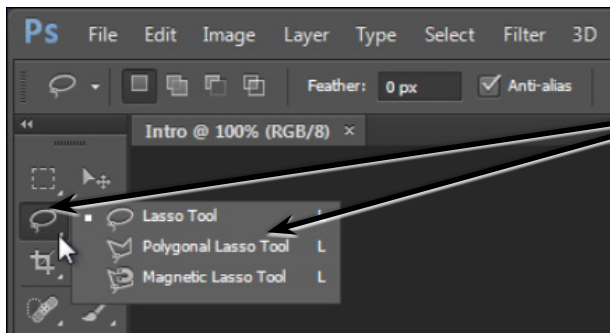
## The Tools Panel

The TOOLS panel at the left of the screen provides general drawing and photo adjustment tools. The panel can be displayed as a single column or with the tools in two columns.



- 2 In these tutorials the TOOLS panel will be used as 2 columns, so click on the double arrows in the dark bar until the tools are displayed in 2 columns.

- Tools that have a small arrow next to them have more tools within them.



- Click and hold on the LASSO tool (the second left tool) and the three lasso tool types will be displayed.

- Click and hold on some of the other tools to see what extra tools they contain.
- The letter displayed next to a tool when you click and hold on it is the keyboard shortcut to select that tool. Try pressing the B key and the BRUSH TOOL should be selected.
- Hold down the SHIFT key and press the E key a few times. The tools within the ERASER TOOL group will be toggled.

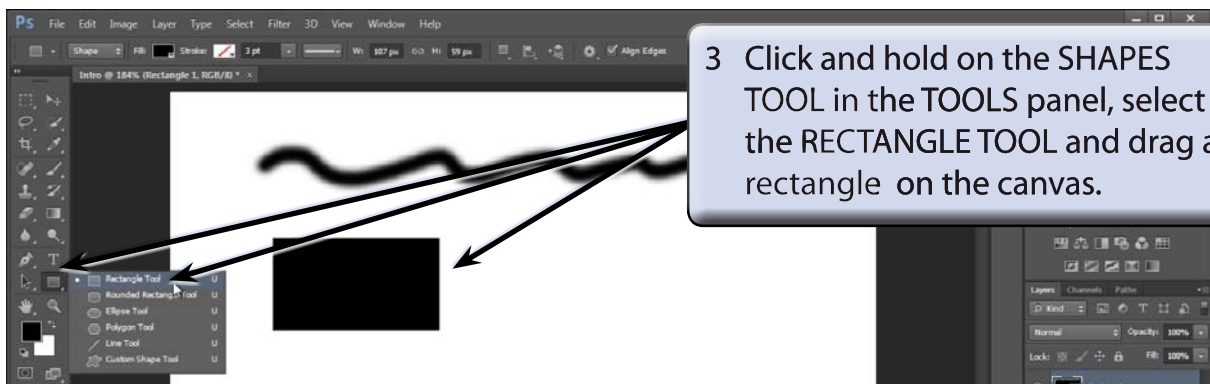
## Using the Tools

We will have a quick look at some of Photoshop's basic drawing tools. You may need to click and hold on a tool to select it depending on who has used to program before you.

- Display the VIEW menu and select FIT ON SCREEN to zoom the canvas so that it fills the available screen area.



- Select the BRUSH TOOL from the TOOLS panel and try drawing some brush strokes on the canvas.

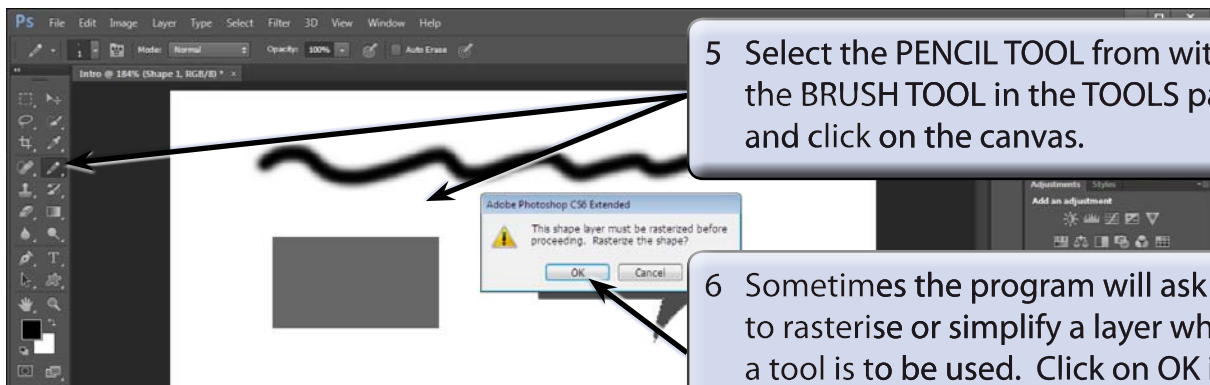


3 Click and hold on the SHAPES TOOL in the TOOLS panel, select the RECTANGLE TOOL and drag a rectangle on the canvas.



4 Click and hold on the SHAPES TOOL, select the CUSTOM SHAPE TOOL and drag a shape on the screen.

**NOTE:** Your shape may be different to the one displayed. The SHAPE box in the OPTIONS BAR at the top of the canvas can be used to select different shapes.



5 Select the PENCIL TOOL from within the BRUSH TOOL in the TOOLS panel and click on the canvas.

6 Sometimes the program will ask you to rasterise or simplify a layer when a tool is to be used. Click on OK in this case.