

Portals

There are times when it is preferred to show data from a related file in the form of a list. In the previous chapters only one product from each supplier is displayed, however, each supplier can provide more than one product to the company. The PORTAL tool can be used to show fields from related files in a list. It basically creates a window within a layout so that fields from the related tables can be seen. By doing this we will be able to view and enter multiple products from the one supplier.

Opening the Database

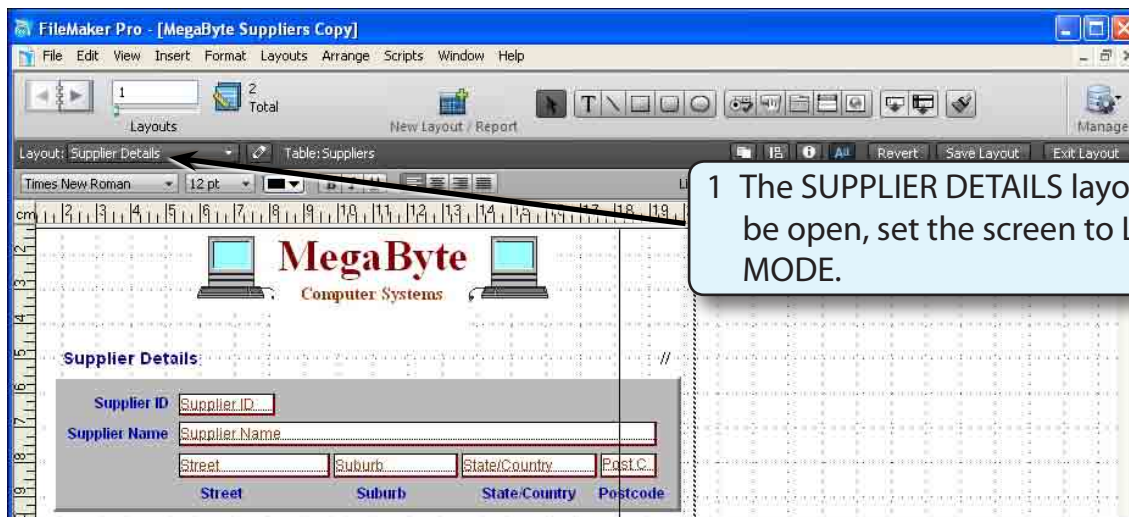
The database that you used in the last chapter will be used to display a portal.

- 1 Load FileMaker Pro 10, click on OPEN DATABASE and select BROWSE FILES. Or close the current file and select OPEN from the FILE menu.
- 2 Access your FMP10 FILES and load the file:

MEGABYTE SUPPLIERS COPY

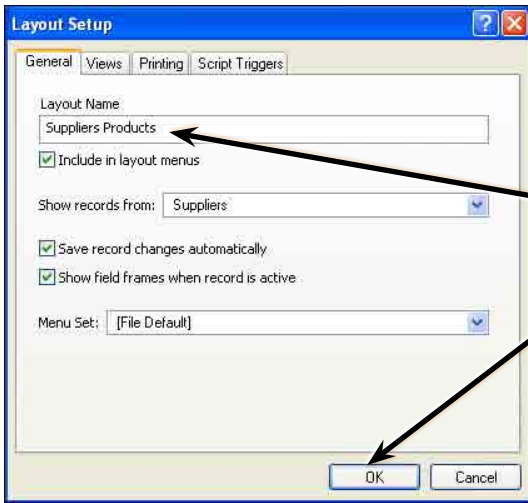
Duplicating a Layout

We will create a duplicate of the current layout and place a PORTAL in the new layout.



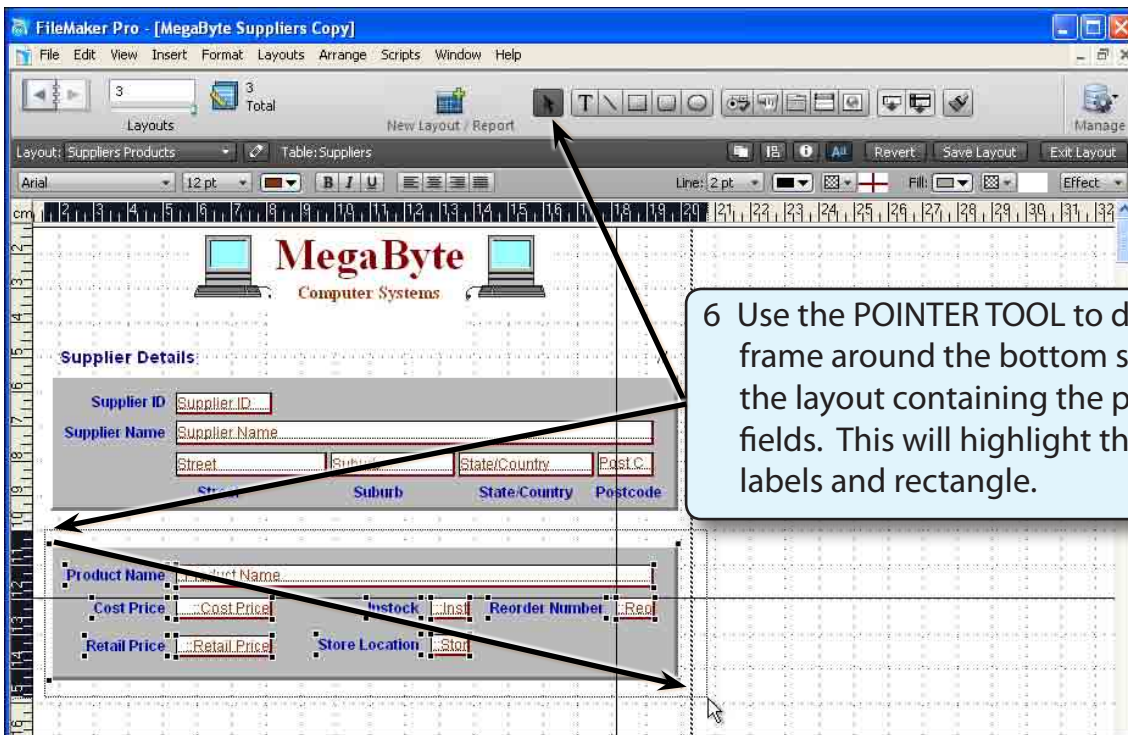
- 2 Display the LAYOUTS menu and select DUPLICATE LAYOUT.

- 3 Display the LAYOUTS menu again and select LAYOUT SETUP.



4 Rename the layout:
Suppliers Products
and click on OK.

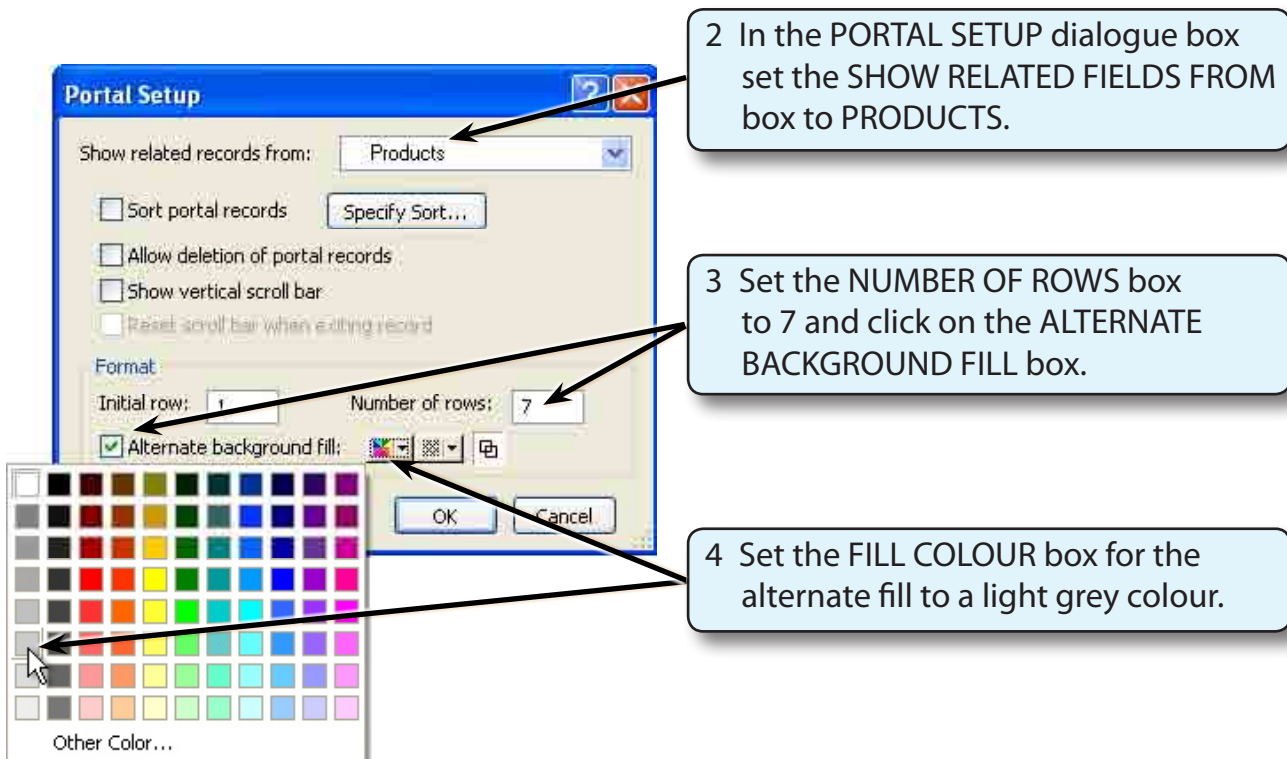
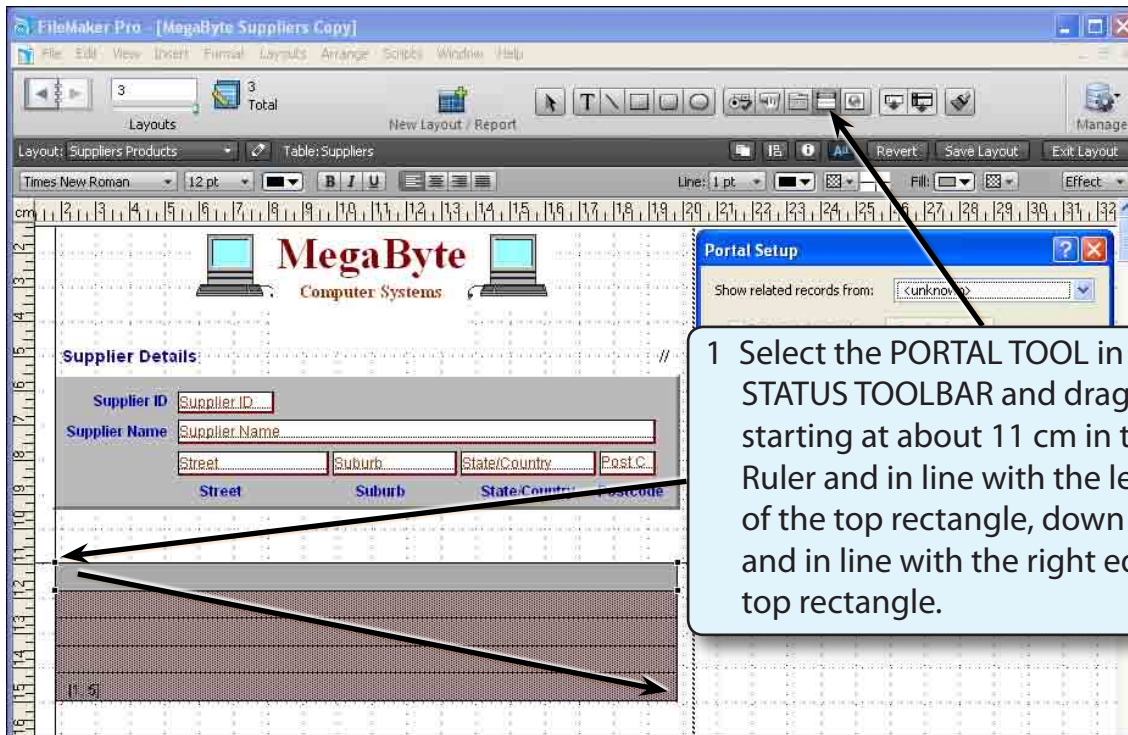
- 5 We don't need the PRODUCT fields in the current arrangement, so we will delete them and re-enter them in a PORTAL frame.



6 Use the POINTER TOOL to drag a frame around the bottom section of the layout containing the product fields. This will highlight the fields, labels and rectangle.

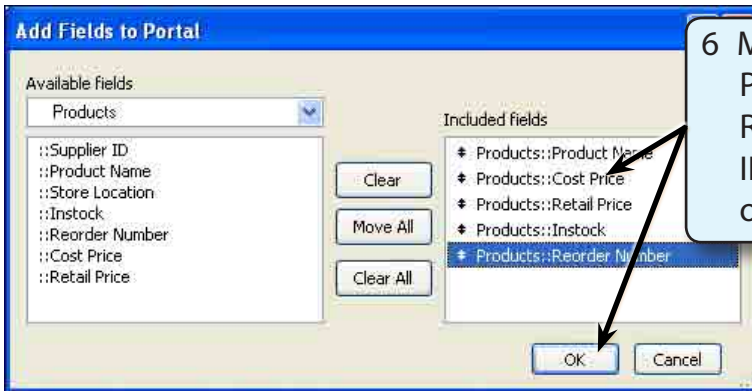
- 7 Press the DELETE or BACKSPACE key to remove the objects.

Inserting the Portal Frame

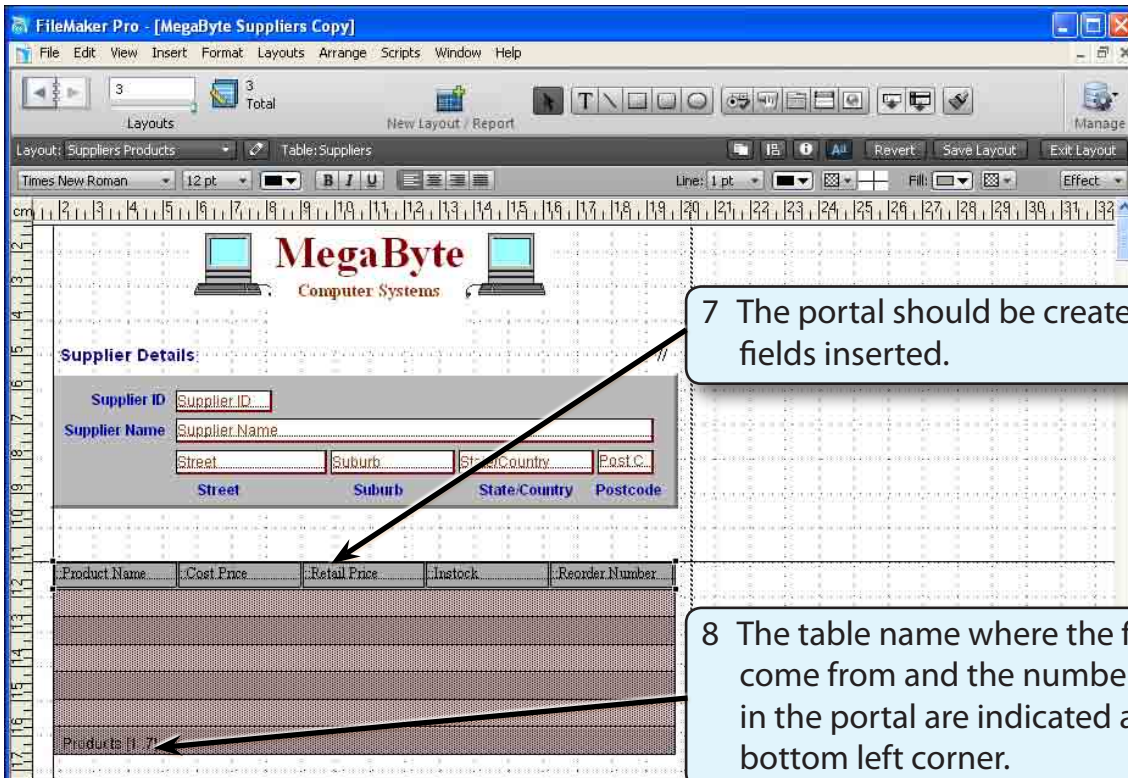


NOTE: ALTERNATE BACKGROUND will cause every second row in the PORTAL frame to be shaded in a different colour.

5 Select OK and you will be asked which fields are required in the portal.



6 Move the PRODUCT NAME, COST PRICE, RETAIL PRICE, INSTOCK and REORDER NUMBER fields into the INCLUDED FIELDS frame in that order and select OK.



7 The portal should be created with its fields inserted.

8 The table name where the fields come from and the number of rows in the portal are indicated at the bottom left corner.

The screenshot shows the FileMaker Pro interface with a portal in Browse Mode. The portal displays the following data:

Supplier Details

Supplier ID: ECS004
 Supplier Name: Emerson Computer Supplies
 49 Oberon Drive, San Diego, California USA, 92121

Products Table:

Emerson Mouse	32	45.00	55	20
Emerson Mouse	1.95	4.95	125	20
Box DVD (10)	10.5	13.95	124	30
Box, CD-ROM	19.5	24.95	55	30
CD/DVD Storage	12.50	15.50	7	

Callout 9: Set the screen to BROWSE MODE (saving the layout changes, if asked) and scroll through the suppliers. The products they supply are now listed.

Callout 10: The portal fields need to be formatted.

Formatting the Portal Fields

The PORTAL frame acts just like a columnar report. The fields are formatted and resized in the same way.

A The Text Formats

- 1 Return the screen to LAYOUT MODE.