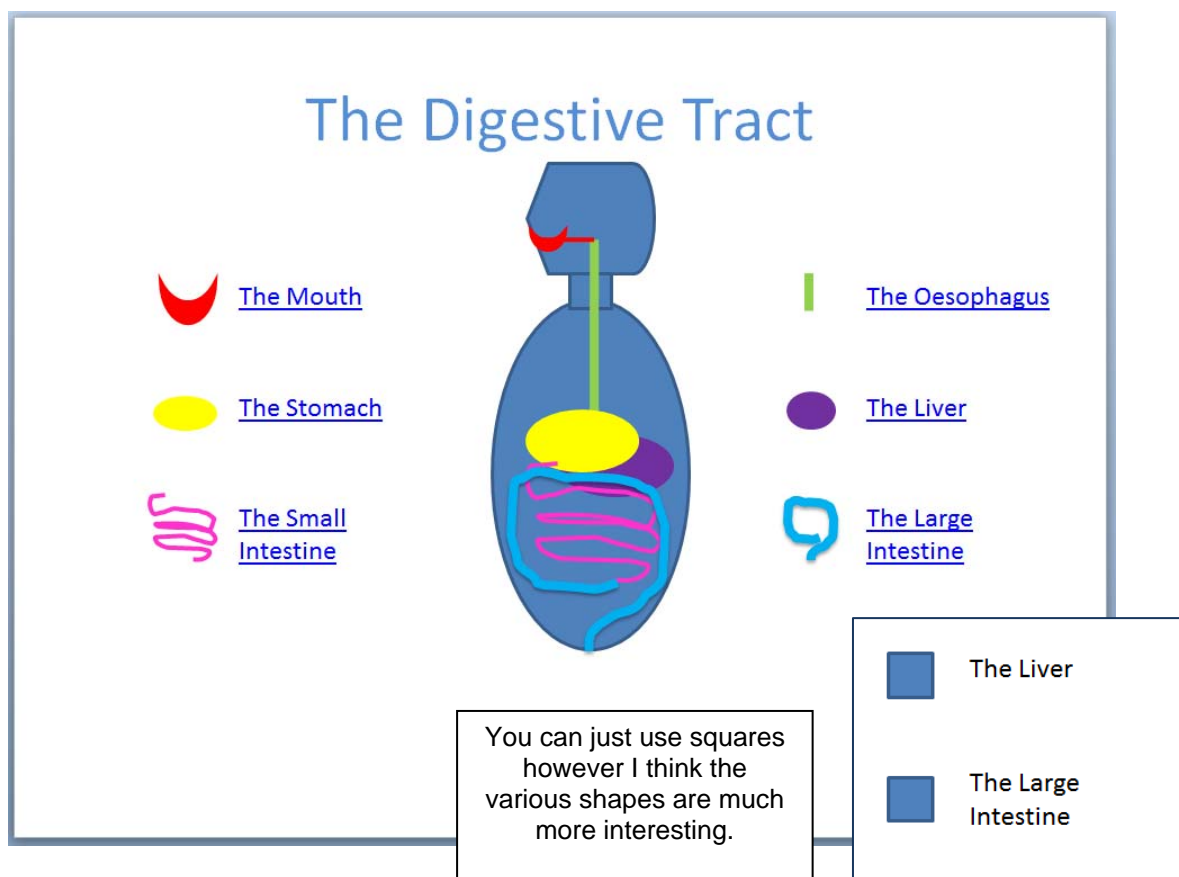
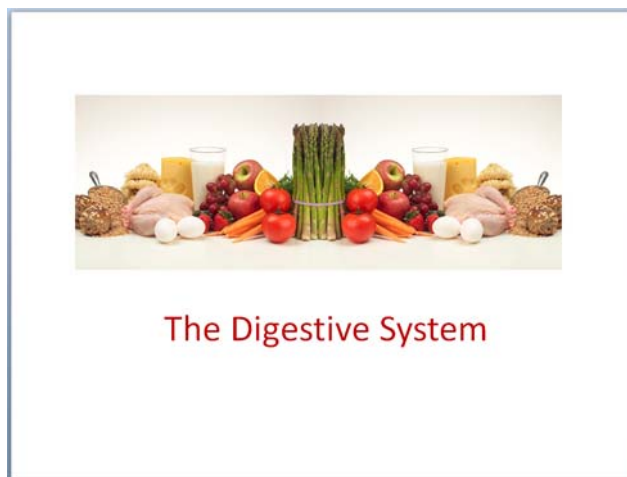


Using Action Object to Navigate

This exercise is going to make use of your drawing skills as well as using Action buttons. You will apply the Action capability to normal drawing objects. You will also insert text hyperlinks.

Creating the File

1. Create the following slides that provide information on the digestive system.
2. Save the presentation in your student folder with the name **FOOD FOR THOUGHT**.
3. This slide is mostly a collection of drawing objects. You can simply draw squares



4. Add the remaining slides with information on each of the main parts of the digestive system. Draw a Star for the navigation button and a small text box just on one slide



[Back to Main Menu](#)

The Mouth

- This is where digestion begins
- Chewing physically breaks down food
- Saliva contains an enzyme that chemically breaks down starch
- Saliva also helps the chewing and swallowing actions



[Back to Main Menu](#)

The Oesophagus

- This is a hollow muscular tube which leads to the stomach
- Muscular contractions push the food down to the stomach (even if you are standing on your head)

The Stomach

- The stomach churns and mixes food
- Enzymes in the stomach start the digestion of protein
- Hydrochloric acid is also released which will kill bacteria and get the enzymes working

The Small Intestine

- Seven meters long coiled up
- Small molecules resulting from the digestive process pass through the wall into the blood vessels to be carried throughout the body
- Starch and protein digestion are completed
- Fat digestion occurs

The Liver

- Blood transports digested food from the small intestine to the liver and then to the rest of the body
- The liver controls the amount of food molecules in the blood

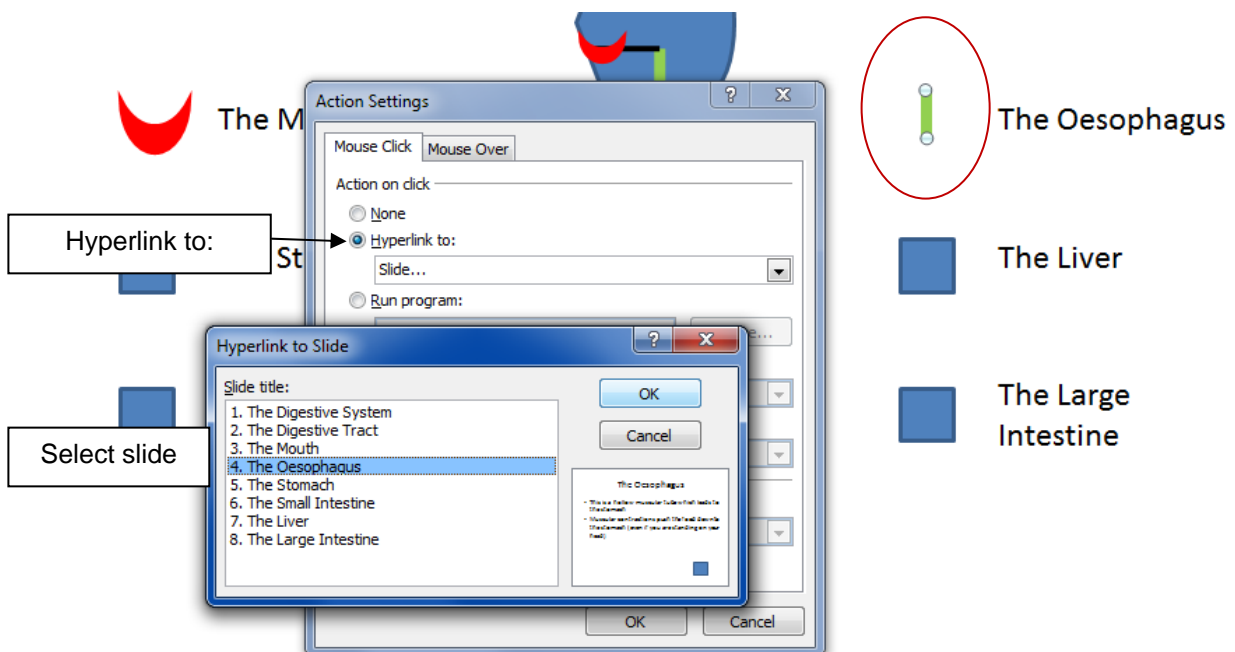
The Large Intestine

- Remaining undigested food and water pass from the small intestine to the large intestine
- Water is absorbed here as well as some of the remaining food
- The remaining food is passed out the anus as waste

5. Click on the object eg the Line for the Oesophagus
6. Click on the tab **Insert** ➤ **Action**



7. Click on the **Hyperlink to** option
8. Click on the droplist button
9. Scroll down and click on **Slide...**
10. Click on the appropriate slide in the list eg The Oesophagus
11. Click on **OK**

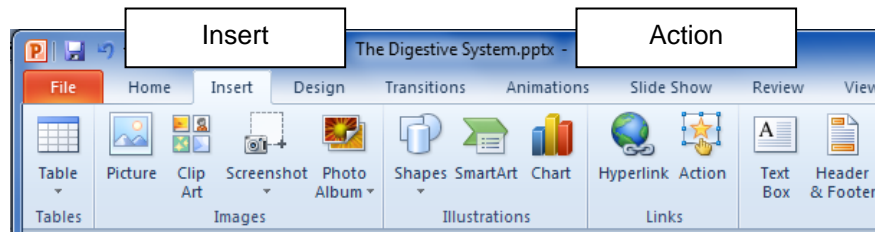


12. Repeat to apply the **Action** feature to each object

13. Display Slide 3 The Mouth

14. Select the Star

15. Click on tab Insert: Action



16. Click on the **Hyperlink to** option

17. Click on the droplist button

18. Scroll down and click on **Slide...**

19. Click on the slide **The Digestive Tract**

20. Click on **OK**

The Mouth

- This is where food enters the body
- Chewing breaks down food
- Saliva coats food to break it down chemically
- Saliva also contains enzymes that help with digestion and swallowing
- Saliva also contains actions

Back to Main Menu

21. With the star selected, hold down the [Ctrl] key and click on the text box

22. Click on the **Home** tab and click on **Copy**

23. Click on each of the slides 4 to 8 and click on **Paste** to copy the button and text onto each slide