

# Sky Replacement and Neural Filters

Adobe Photoshop is gradually adding powerful intelligent filters that analyse photos and perform tasks on them that are very difficult to do manually. Some examples of these include automatically replacing skies, changing facial expressions and colourising old black and white photos.

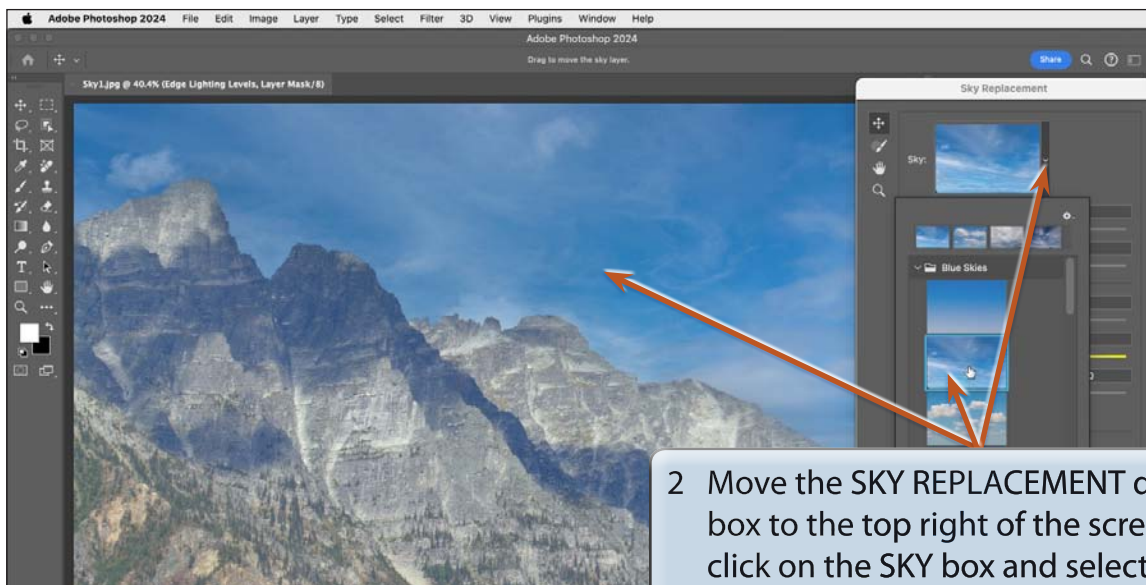
## Sky Replacement

### A Loading the Sample Photo

- 1 Load Photoshop or close the current files then click on the OPEN icon in the WELCOME screen or display the FILE menu and select OPEN.
- 2 Access the CHAPTER 22 folder of the PS SUPPORT FILES and open the SKY1 image.
- 3 Press **CTRL+0** or **COMMAND+0** to set the view to FIT ON SCREEN.

### B Replacing the Sky

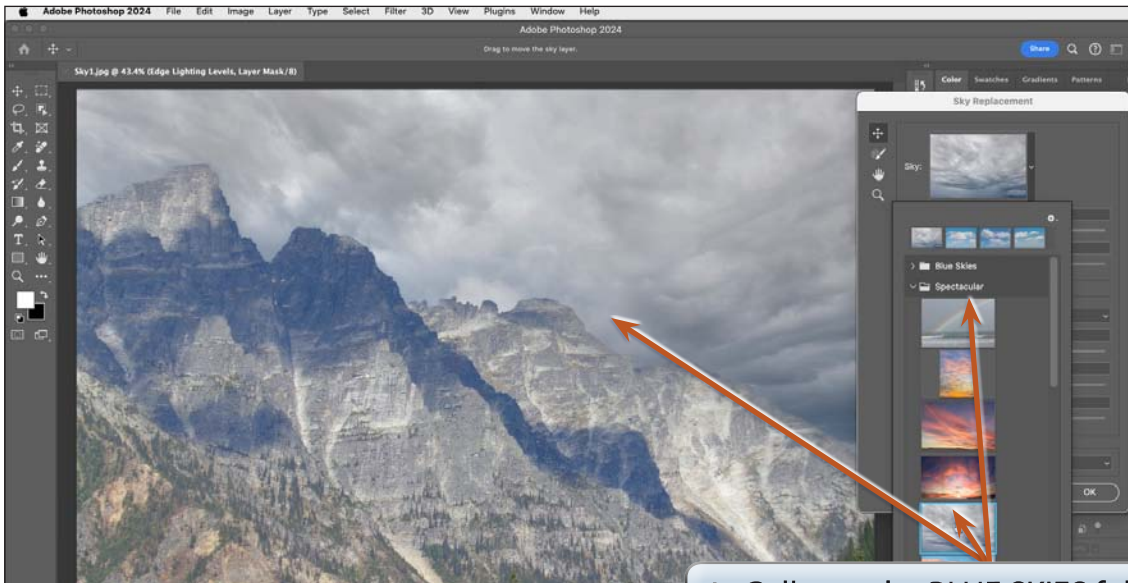
- 1 Display the EDIT menu and select SKY REPLACEMENT.



- 2 Move the SKY REPLACEMENT dialogue box to the top right of the screen then click on the SKY box and select a sky from the BLUE SKIES folder to replace the current sky.

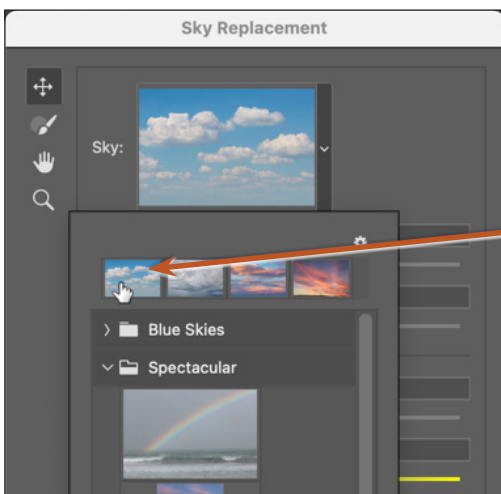
**NOTE: The first sky selection might be slow as the program analyses the photo. Any subsequent sky selections should be quicker.**

3 Try some other blue skies.



4 Collapse the BLUE SKIES folder, expand the SPECTACULAR folder and try some of those skies.

5 Try some of the other SPECTACULAR and SUNSET options.

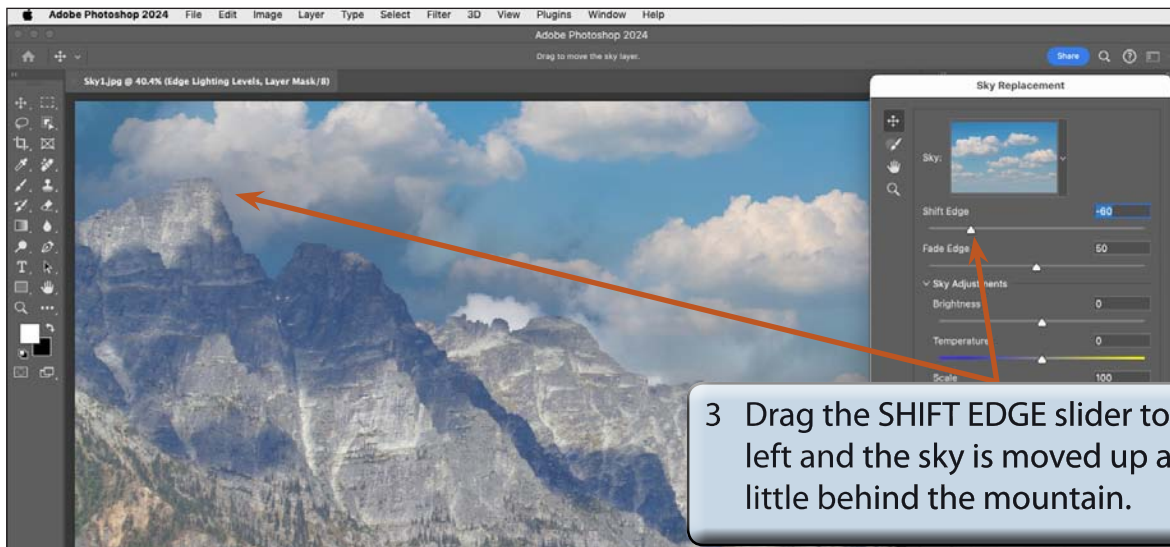
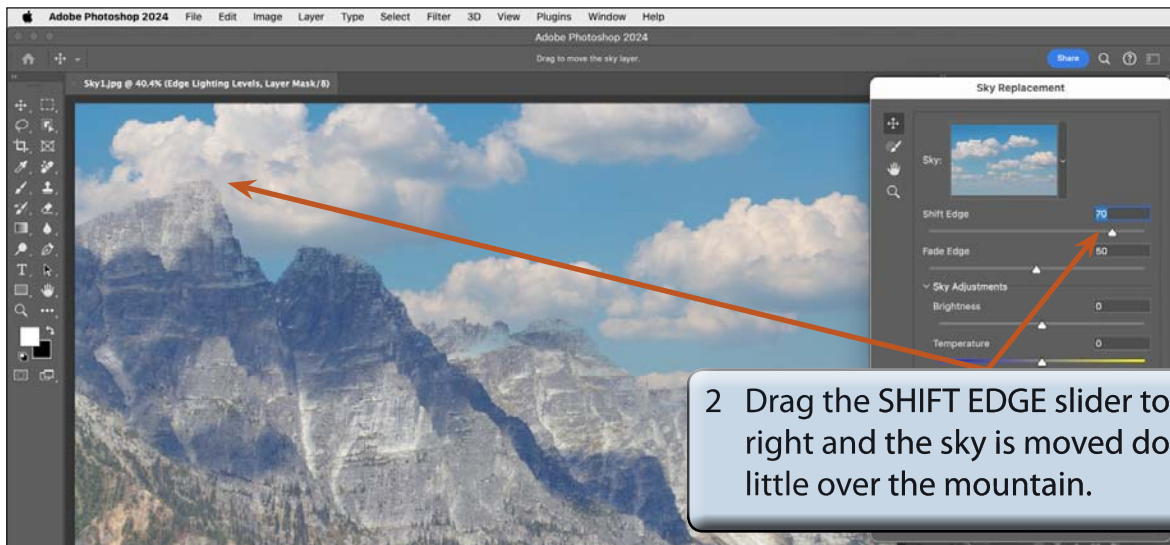


6 Select a BLUE SKY that you like. Previously selected skies are provided at the top of the skies folders.

## C Adjusting the Sky Position

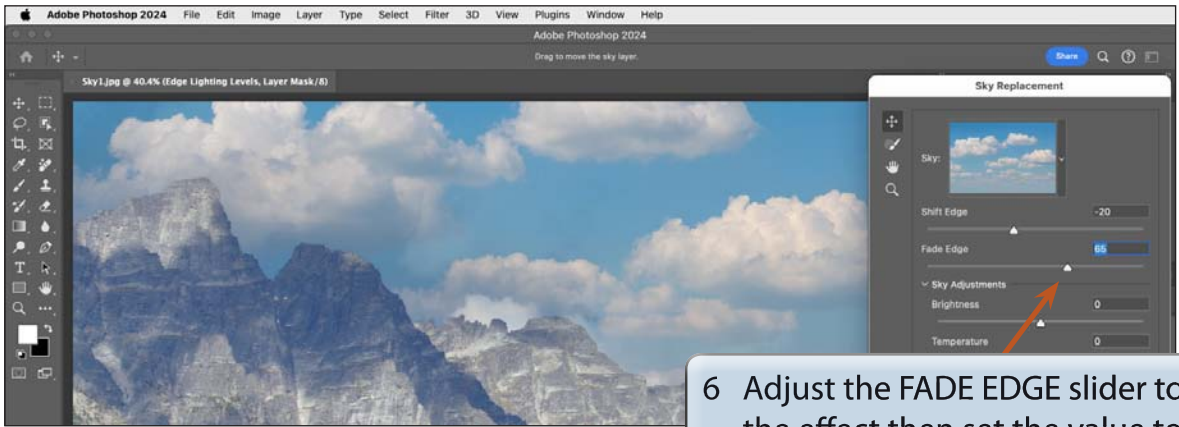
You can adjust how close the sky is to its content and how it fades into that content.

- 1 Click on the SKY box arrow to close the sky samples.



- 4 Set the SHIFT EDGE to about -20.

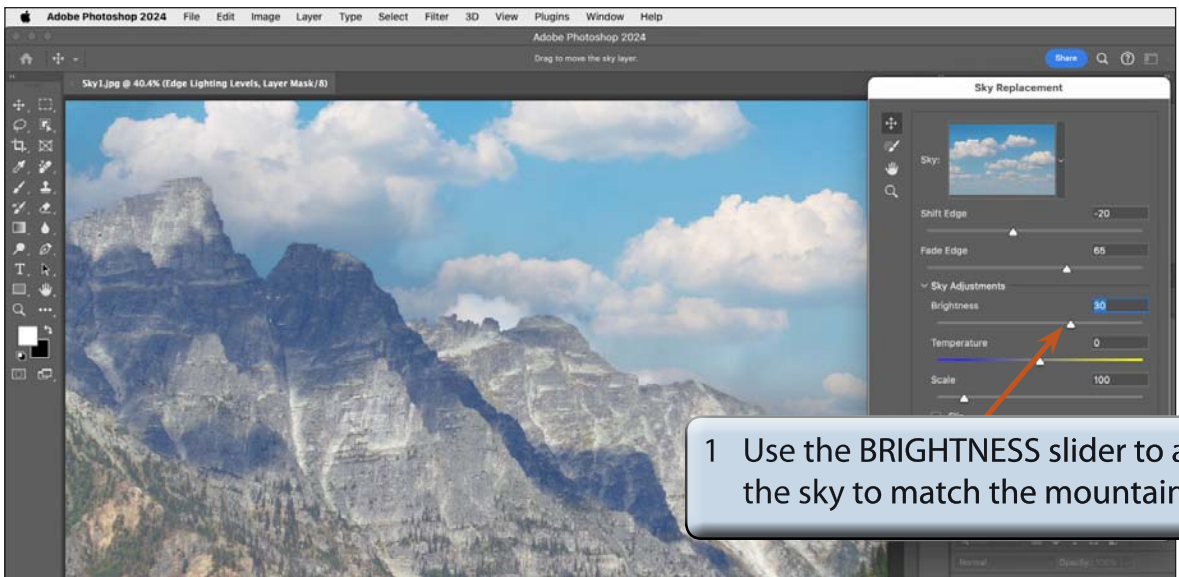
- 5 The FADE EDGE controls how sharp the transition is between the edge of the sky and the content. A low figure means a sharp transition whereas a high figure produces a more blurred transition.



6 Adjust the FADE EDGE slider to see the effect then set the value to 65%.

## D Adjusting the Sky Properties

The brightness, temperature and scale of the sky can be adjusted.



1 Use the BRIGHTNESS slider to adjust the sky to match the mountain.