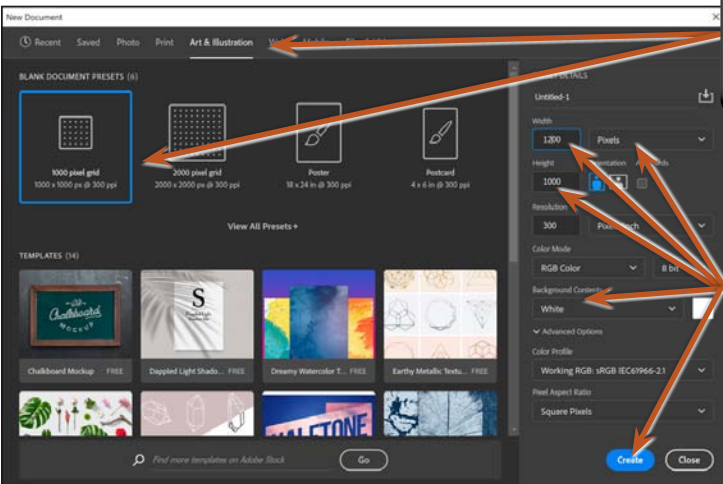


# Artistic Brushes

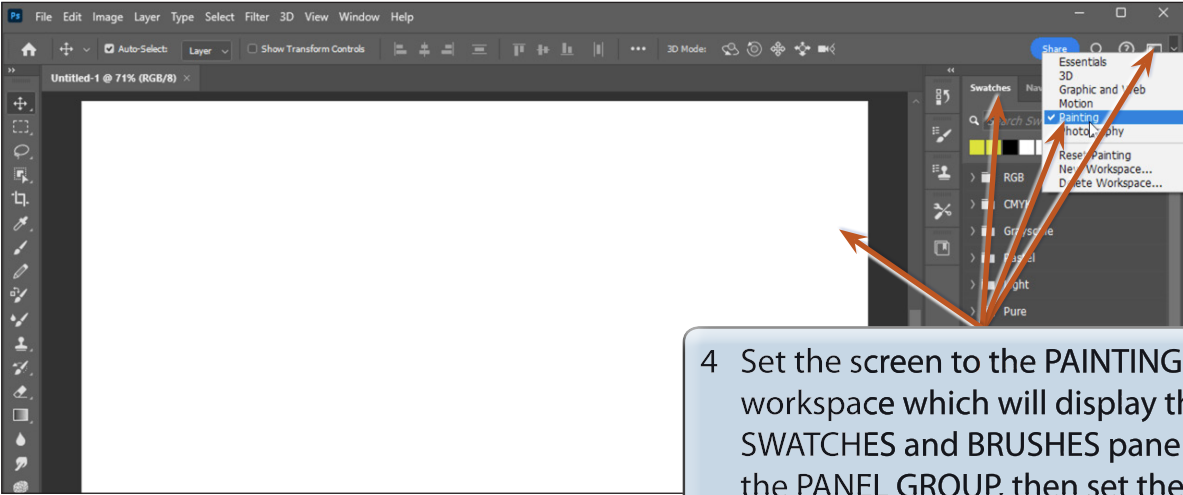
Photoshop provides extensive artistic brushes that can be used to create artwork from scratch or convert photos to artwork. In this chapter some of the different brush types and brush settings will be demonstrated.

## Starting a New Document

- 1 Load Photoshop or close the current files then click on the NEW FILE button in the WELCOME screen or display the FILE menu and select NEW.



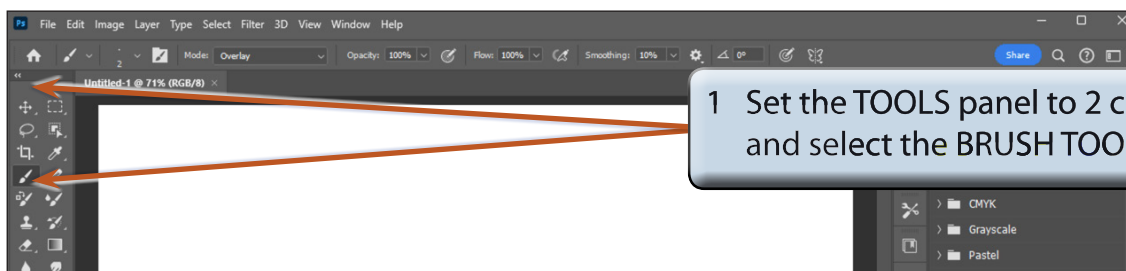
- 2 Click on ART & ILLUSTRATION category and select the first (default) PRESET.
- 3 Set the WIDTH to 1200 pixels, the HEIGHT to 1000 pixels, the BACKGROUND CONTENTS to WHITE and select CREATE.



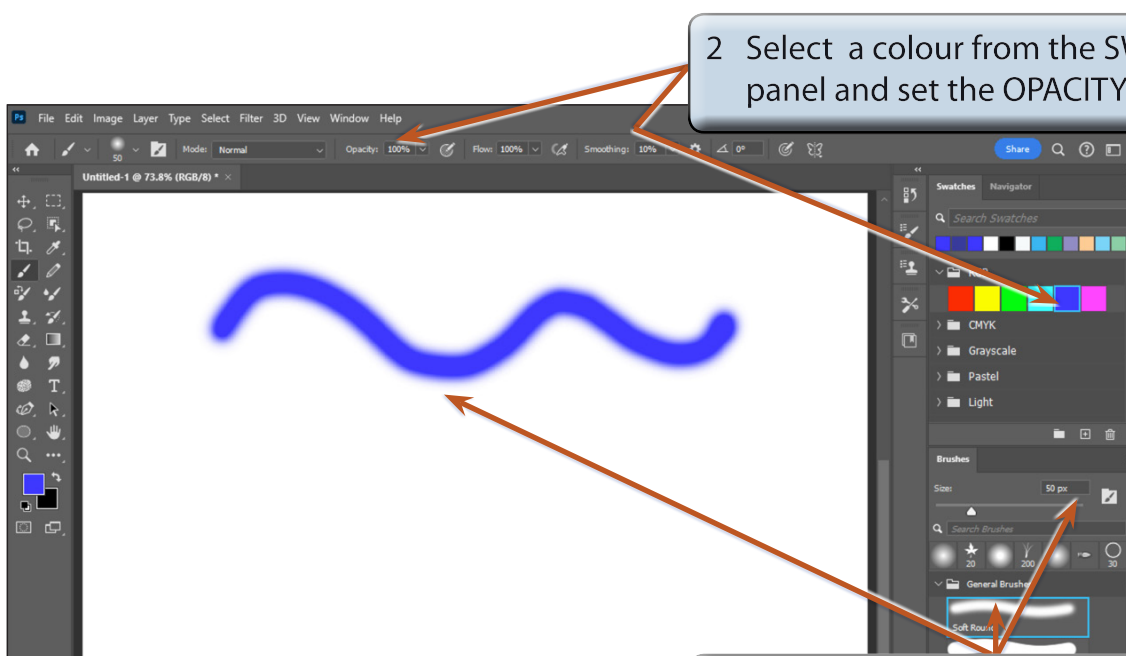
- 4 Set the screen to the PAINTING workspace which will display the SWATCHES and BRUSHES panels in the PANEL GROUP, then set the view to FIT ON SCREEN.

## Using Brushes

The use of the BRUSH TOOL will be briefly revised.



1 Set the TOOLS panel to 2 columns and select the BRUSH TOOL.



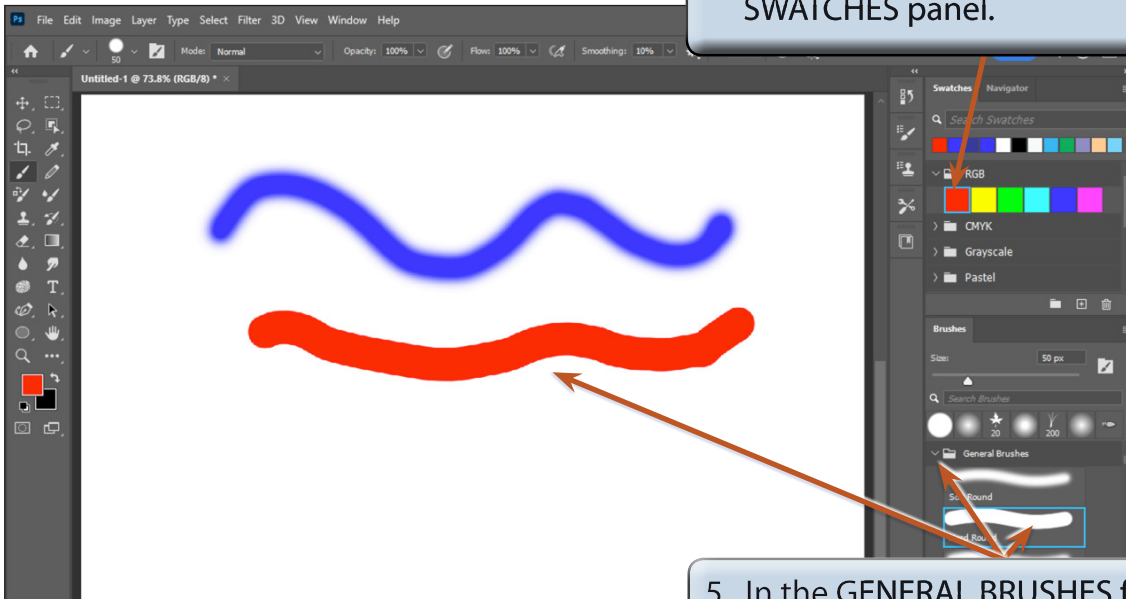
2 Select a colour from the SWATCHES panel and set the OPACITY to 100%.

3 Select the first brush in the GENERAL BRUSH section of the BRUSHES panel, drag the SIZE slider to about 50 px and paint on the canvas.

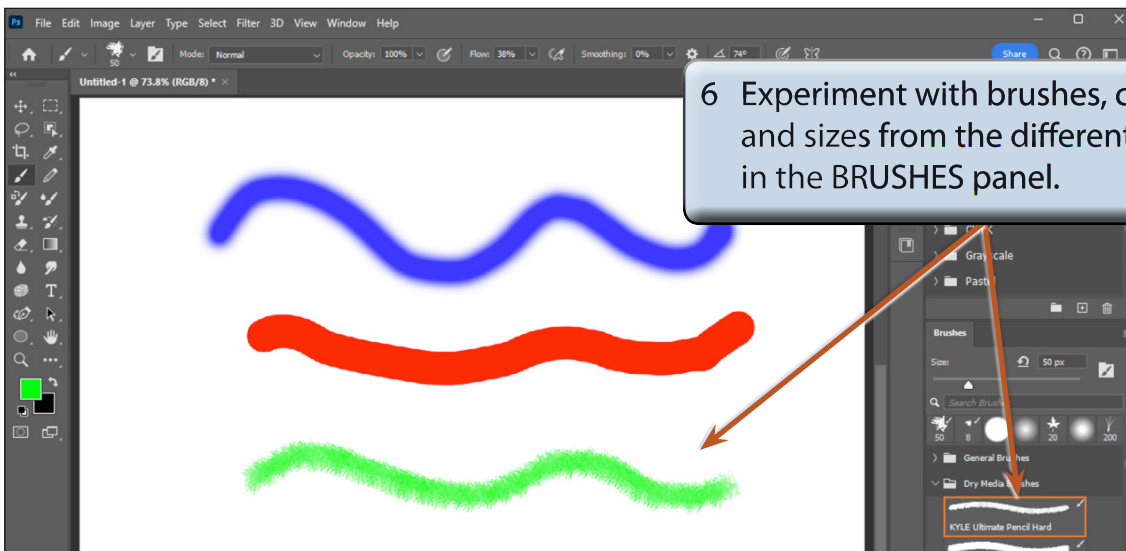
**NOTE:**

- i The brushes at the top of the BRUSHES panel are the recently used brushes. All the brushes are contained in folders below the recently used bar.
- ii The BRUSHES panel provides the same brush options as the BRUSH PRESET PICKER option in the OPTIONS BAR.

4 Select a different colour in the SWATCHES panel.



5 In the GENERAL BRUSHES folder in the BRUSHES panel, select the second brush and paint below the first strokes.

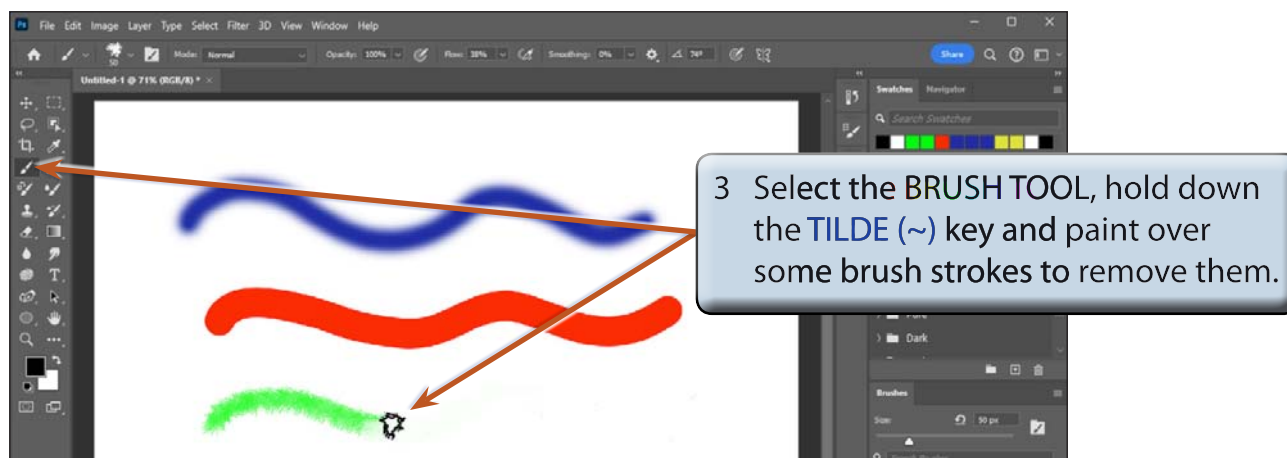
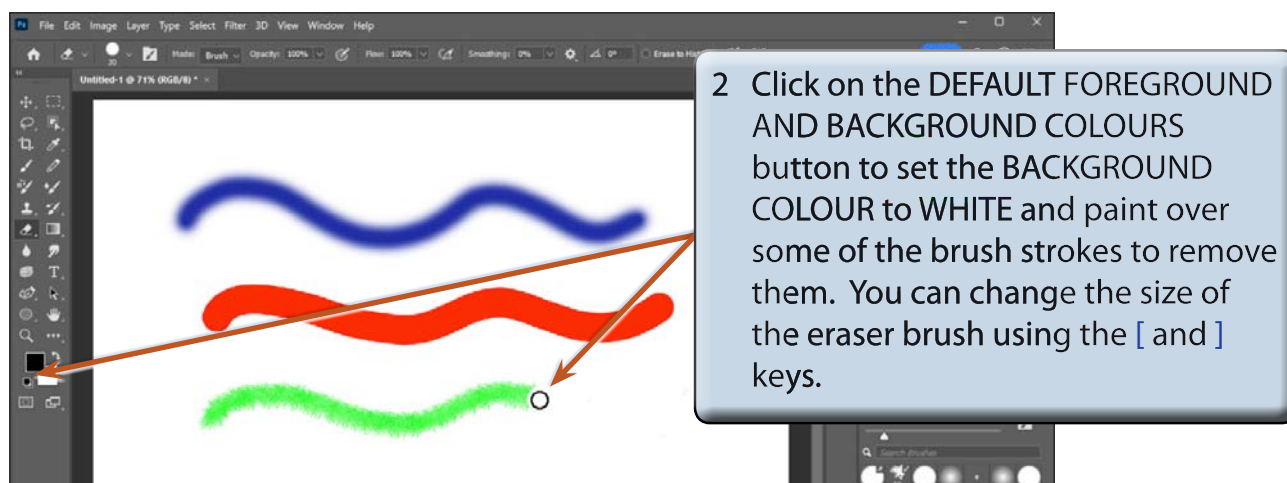
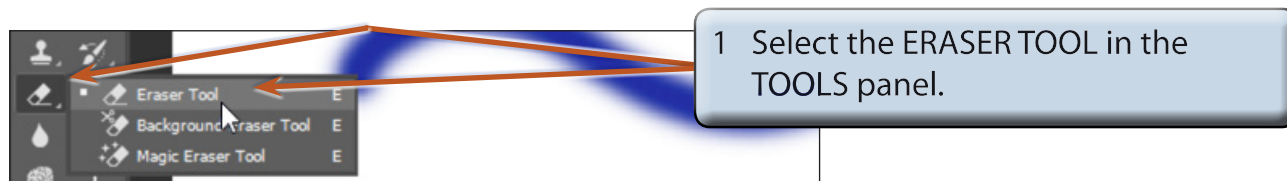


6 Experiment with brushes, colours and sizes from the different folders in the BRUSHES panel.

**NOTE:** The SMOOTHING option from the OPTIONS BAR can be adjusted to provide more smoothing if a brush stroke is too 'jittery'.

## Erasing Brush Strokes

Brush strokes can be erased using the ERASER TOOL or by holding down the TILDE key (~), which is the key below the ESC key. The BACKGROUND colour needs to be the same as the CANVAS background.



**NOTE: If you make a mistake with the BRUSH TOOL, either select UNDO (CTRL+Z to COMMAND+Z), hold down the TILDE key (~) and paint over the error or select the ERASER TOOL and paint over the error.**