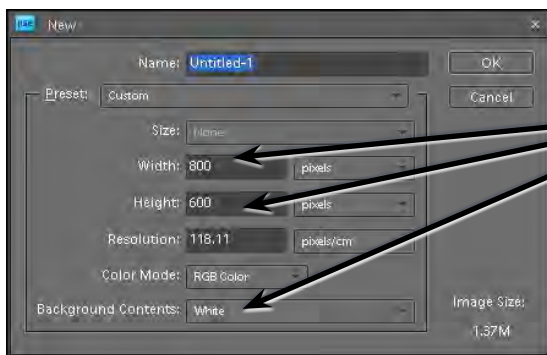


The Drawing Tools

Photoshop provides drawing tools that can be used with photos or in the creation of your own designs. These tools allow you to create web page buttons,, borders for photos, company logos, artistic sketches, etc.

Starting a Blank Document

- 1 Load Photoshop Elements in EDIT MODE or close the current file.
- 2 Display the FILE menu, highlight NEW and select BLANK FILE.



3 Set the WIDTH to 800 pixels, the HEIGHT to 600 pixels and the BACKGROUND CONTENTS to WHITE.

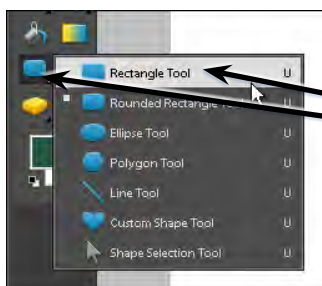
- 4 Select OK to start the document.

Drawing Normal Shapes

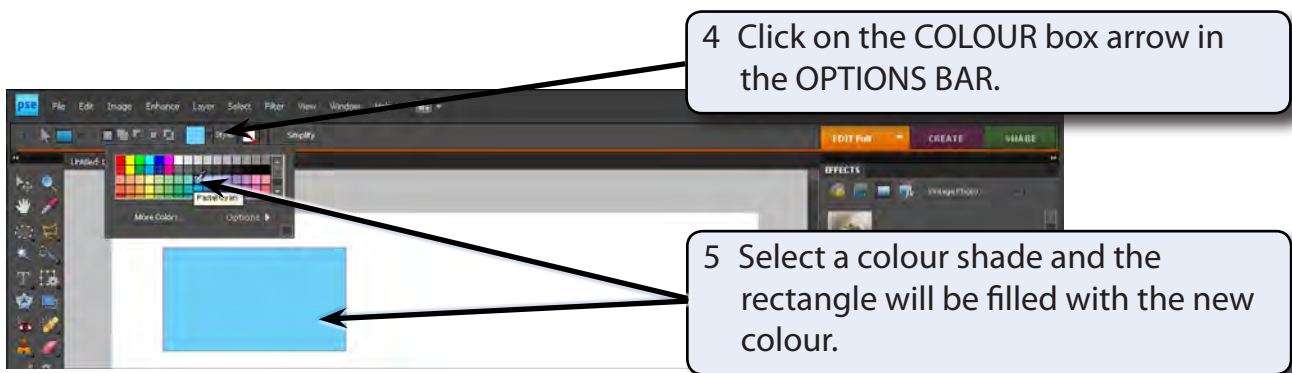
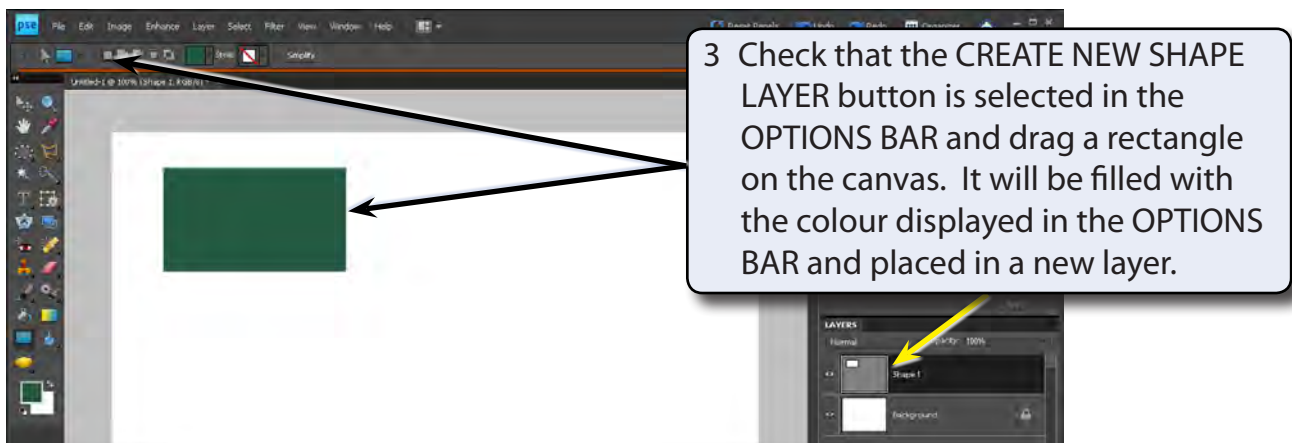
Photoshop provides the normal drawing shapes such as rectangles, ellipses, polygons and lines.

A Drawing Rectangles

- 1 The SHAPES TOOL is at the lower section of the TOOLS panel. It may contain a rectangle, ellipse, line or custom shape depending on which tool was used last.



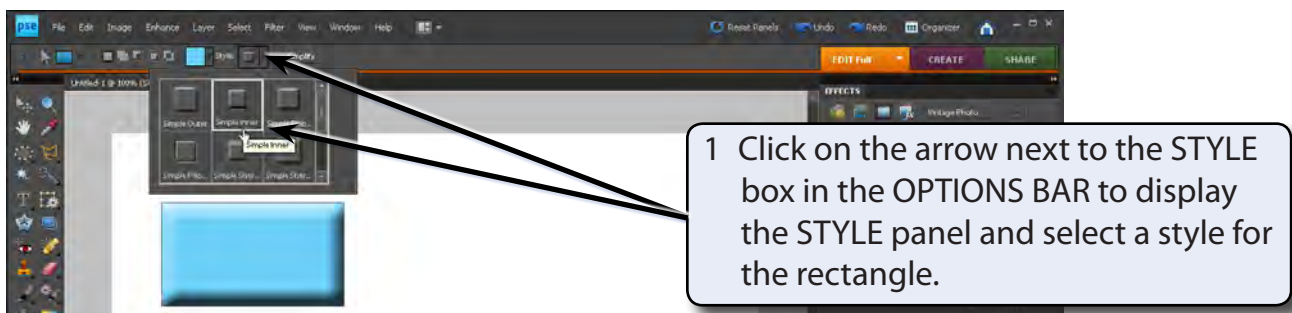
2 Click and hold the mouse button on the SHAPES TOOL in the TOOLS panel and select the RECTANGLE TOOL from the pop-up list of tools.

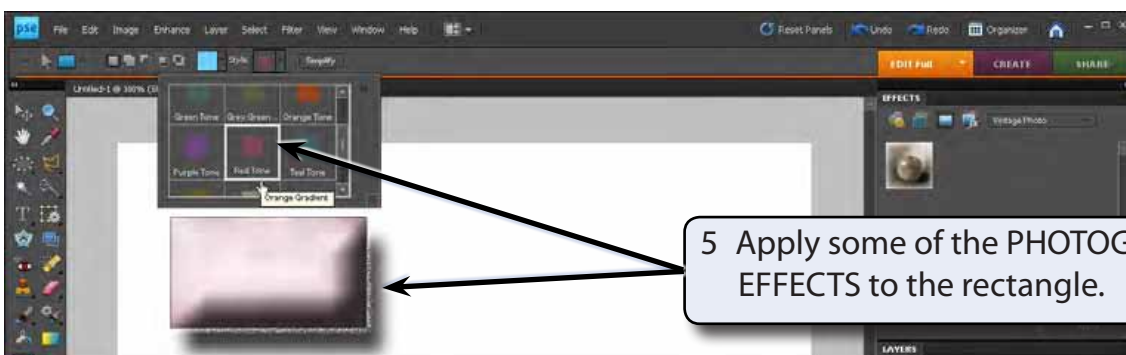
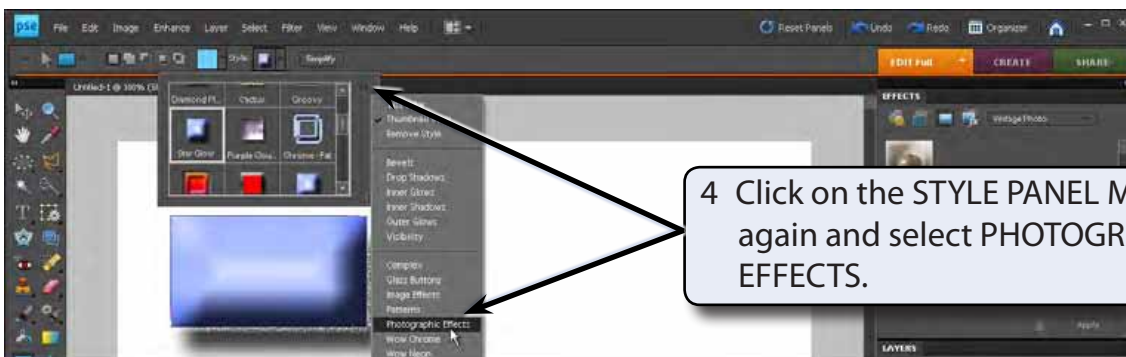
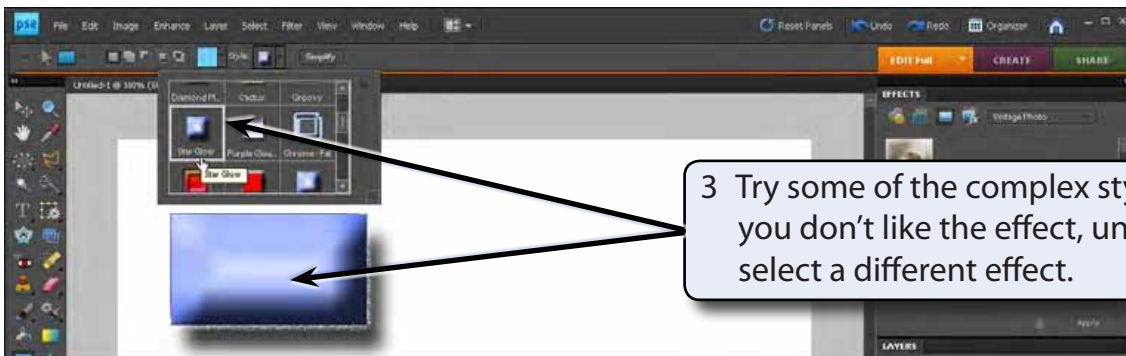
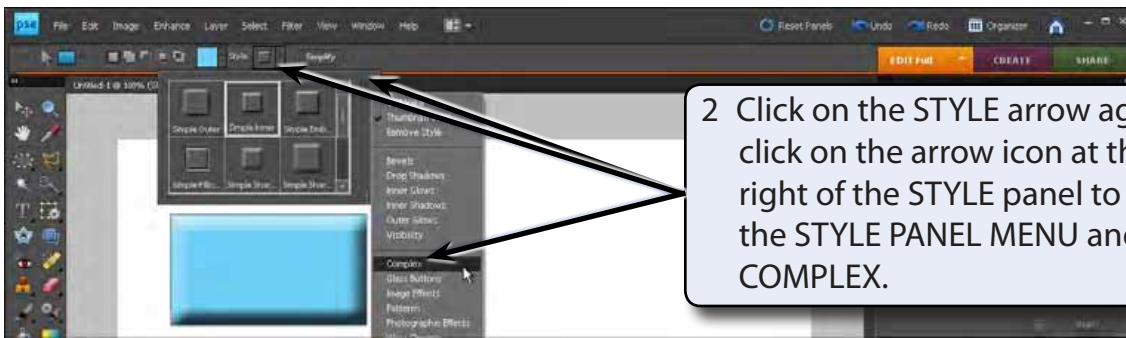


6 Click on the COLOUR box arrow again to close the COLOUR panel.

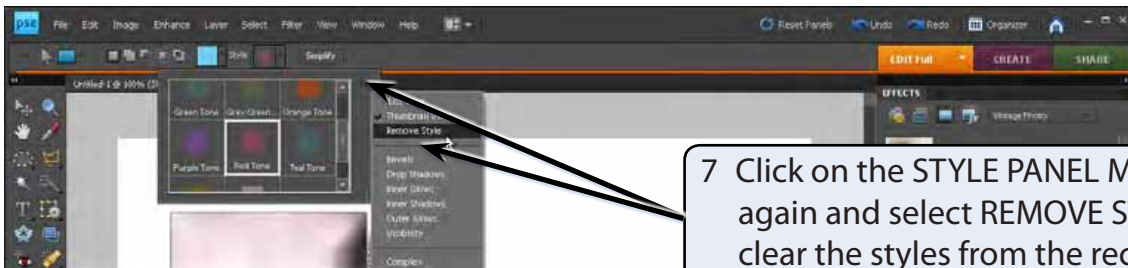
B Rectangle Styles

There are numerous styles that can be applied to a shape.





- 6 Try some other styles from the STYLE PANEL MENU. Some are suitable for rectangles others are less effective.



C Using the Effects Panel

You can also apply styles to the rectangle from the EFFECTS panel in the PANEL BIN.

